



PARKS • RECREATION • OPEN SPACE

MASTER PLAN

January 2023



Acknowledgments

The City of McKinney provided ongoing support to the Dunaway Team throughout the Master Planning process.

CITY COUNCIL

GEORGE FULLER
Mayor

RAINEY ROGERS
Mayor Pro Tem

JUSTIN BELLER

PATRICK CLOUTIER

GERE FELTUS

RICK FRANKLIN

CHARLIE PHILIPS

CITY STAFF

PAUL GRIMES
City Manager

KIM FLOM
Assistant City Manager

BARRY SHELTON
Assistant City Manager

STEVE TILTON
Assistant City Manager

MICHAEL KOWSKI
Parks & Recreation Director

JENNY BAKER
Parks, Planning & Development Manager

JILL YOUNT
Parks Planning Manager

DUNAWAY TEAM

PHILIP NEELEY, ASLA
Project Director

ELIZABETH McILRATH, ASLA
Project Manager

KOURTNEY GOMEZ
Graphic Designer

PARKS & RECREATION ADVISORY BOARD

SAMUEL FRANKLIN

WINDY GALLAGHER

LUANNE MALNORY

BRUCE MEAD

BOYD PELLEY

KELVIN THOMAS

RIC ANDERSON - ALTERNATE

MONICA ESCAMILLA - ALTERNATE

CDC

MARY BARNES-TILLEY

JOY BOOTH

DEBORAH BRADFORD

DAVID KELLY

KATHRYN MCGILL

ANGELA RICHARDSON-WOODS

DAVID RICHE - ALTERNATE

JON DELL'ANTONIA - ALTERNATE

Contents

4	Executive Summary
10	Introduction
13	Methodology
16	Inventory
81	Population & Demographics
87	Standards
100	Needs Assessment
104	Priority Rankings
107	Implementation
172	Appendix

An aerial photograph of a school campus. In the upper left, there are several brick school buildings with grey roofs. A playground with colorful equipment is visible near the buildings. A large green lawn occupies the center of the image. In the lower center, there is a circular area with a green play structure, a blue canopy, and a sandpit. To the right, residential houses with grey roofs are visible. A large, semi-transparent white number '01' with a green outline is overlaid on the center of the image.

01

EXECUTIVE SUMMARY

Executive Summary



McKinney is not only a destination community that has been widely recognized as one of the best places to live, but it is also greatly known for its robust park system, which exemplifies their “Unique by Nature” brand. Dunaway was commissioned to work with the Parks Department and City Leaders in updating the Parks, Recreation and Open Space Master Plan (Parks Master Plan) to continue to position the City to account for future development while integrating the parks system into the City and its economic success.

Some of the major goals of the Parks Master Plan include:

- Keep developing new and creative park resources that will serve the various growth areas across the City
- Focus on strength reinvestment in existing parks in three key categories: restore, enhance, and reimagine
- Identify and maintain the City’s natural resources for environmental stewardship and recreational enjoyment
- Coordinate the Parks Master Plan with the separate Trails Master Plan to expand the City’s trail network throughout McKinney
- Identify key partnerships with public/public, public/private, and public/not for profits that can support both capital investments and long-term maintenance costs
- Continue conservation efforts for all parks and park land, including additional trees and shade throughout the City

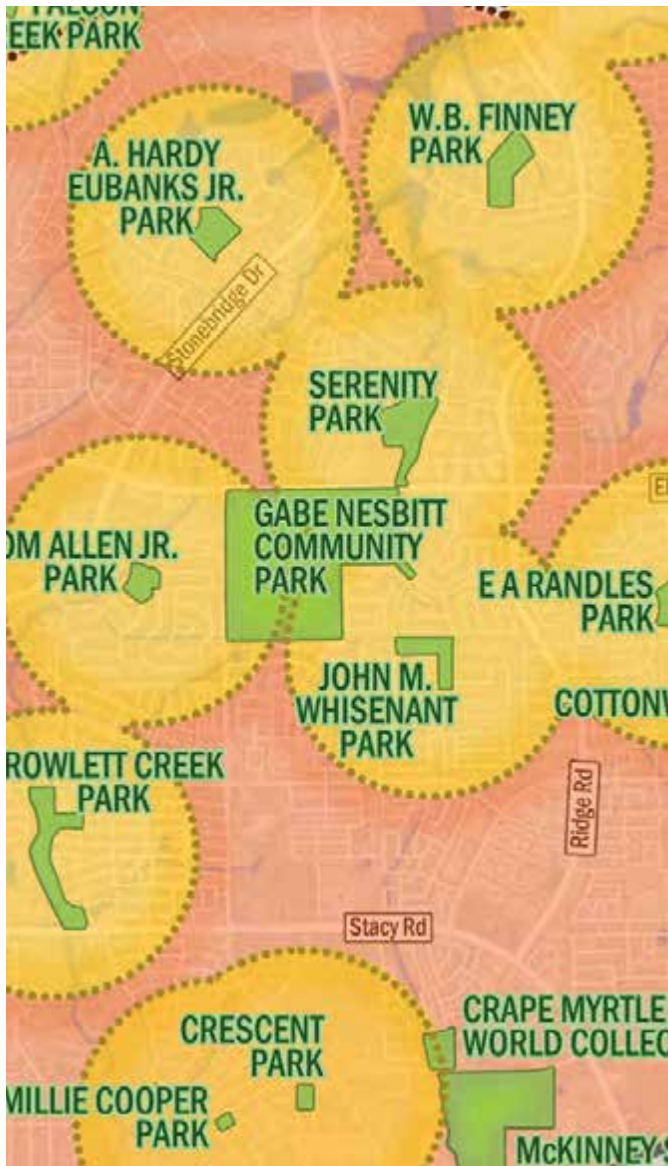
INVENTORY OF PARK LAND

Existing Park Land Acreage in McKinney	
267.91	Neighborhood Park
993.17	Community Park
243.5	Special Purpose Park
1,492.43	Linear Parks & Open Space



Existing Facilities in McKinney	
Baseball Fields	11
Basketball Courts (Outdoor)	19
Pavilion/Picnic Shelter	73
Pickleball Courts (Outdoor)	8
Playgrounds	67
Recreation Center	170,000
Soccer Fields (League)	21
Softball Fields	11
Swimming Pool (Outdoor)	5
Tennis Courts	24
Trails	78
Volleyball Courts (Outdoor)	3





**See page 88 full park service area map.*

NEEDS ASSESSMENT

Priorities for the overall park system were defined by a series of key meetings, conducted by Dunaway and City staff, to get input on the desires and needs for McKinney park improvements.

First, City staff shared with the Dunaway team the previous citizen survey information related to parks and recreation. Work sessions with the Parks and Recreation staff were also facilitated in order to get their input on the park systems future needs over the next 5 to 10 years.

The Park Board and McKinney Community Development Corporation were then brought into a work session, with City staff and the Dunaway team, to discuss their input on park needs and current trends in recreation that are impacting McKinney.

The final step involved the Dunaway team taking the information from previous public input data and recent work sessions to create a specific ranking of priorities for both outdoor and indoor recreation. Separate rankings were performed by the Park Board, Community Development Corporation, and City staff. These priorities were reviewed and confirmed in a follow-up meeting with all parties. This overall process led to priorities for McKinney's parks system (indoor & outdoor facilities) over the next five to ten years.

PRIORITY NEEDS

Priority Rankings - Outdoor Facilities

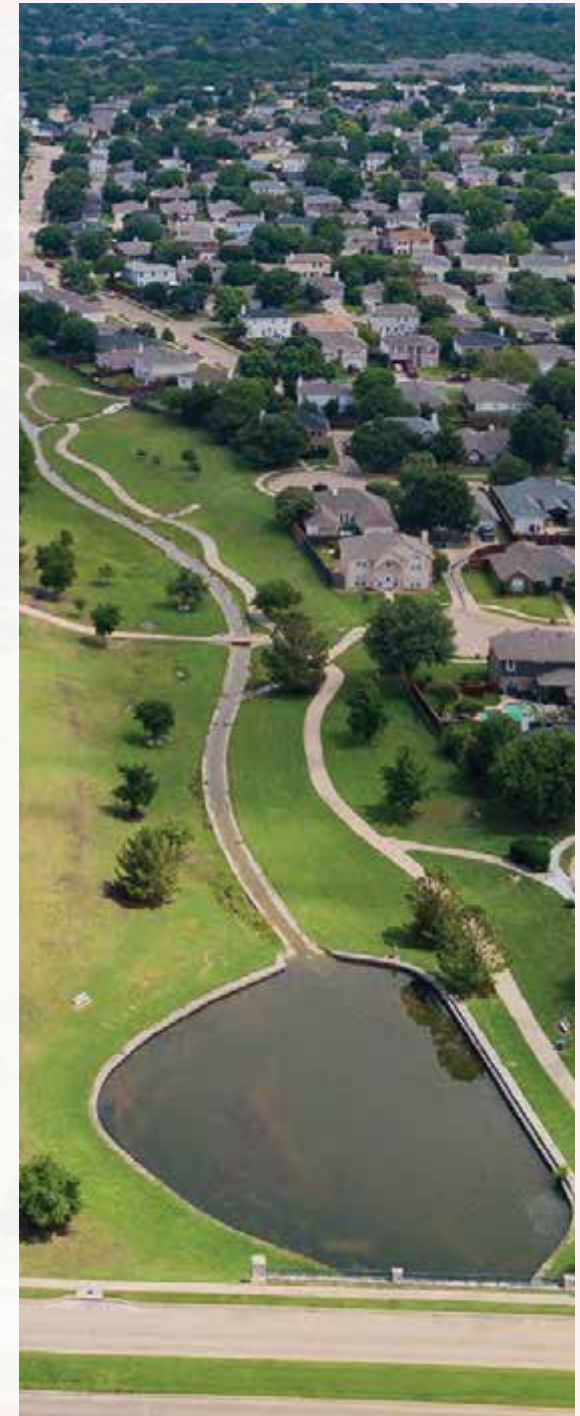
Rank	High Priorities	High
1	Trails	◆
2	Downtown Park	◆
3	Multi-Use Fields	◆
4	Lighting in Parks	◆
5	Restroom / Concessions	◆
6	Outdoor Fitness	◆
7	Shade Structures	◆
8	Special Events	◆
9	Pavilions	◆
10	Wayfinding / Signage	◆
11	Nature Preserve	◆
12	Practice Fields	◆
13	Soccer Fields	◆

Rank	Moderate Priorities	Moderate
14	Playgrounds	◆
15	Learning Center	◆
16	Dog Park	◆
17	Public Art	◆
18	Fishing Piers	◆
19	Technology in Parks	◆
20	Waterpark	◆
21	Softball Fields	◆
22	Baseball Fields	◆

Priority Rankings - Indoor Facilities

Rank	High Priorities	High
1	Expand Recreation Center	◆
2	Adult / Senior Center	◆

Rank	Moderate Priorities	Moderate
3	Indoor Athletic Center	◆
4	Nature & Event Center	◆
5	New Recreation Center	◆



An aerial photograph of a park featuring a playground with colorful equipment, a gazebo, and winding paths. A large, semi-transparent white graphic of the number '02' with a green outline is overlaid on the right side of the image.

02

INTRODUCTION

Introduction



McKinney is widely recognized as an exceptional community in the DFW region, having been ranked as a “best place to live” both locally and nationally. The qualities that make McKinney attractive are what continue to draw new residents, visitors and businesses there today. These qualities include beautiful tree-lined roadways, distinct residential neighborhoods, outstanding educational opportunities, diverse business establishments, a vibrant historic downtown, and an exceptional parks systems – one of the key components of McKinney’s “Unique by Nature” brand.

Unique by Nature speaks to McKinney’s inherent uniqueness and sense of place. It also speaks to the City’s vast and beautiful parks system – offering lakes, streams, greenbelts, forests, sports, nature, conservation, and inspiration. As McKinney grows and diversifies, the parks system will continue to be a treasure for its citizens and visitors. In short, its magnificent resources will highlight McKinney’s quality of life for decades to come.

DESTINATION COMMUNITY

Within an hour of both downtown Dallas and Fort Worth, McKinney is a picturesque city with a small-town atmosphere. For many years McKinney has thrived off the regional activities associated with being part of the DFW Metroplex. Its southern charm, green spaces and comfortable pace belie the fact that McKinney is one of the choice cities in America.

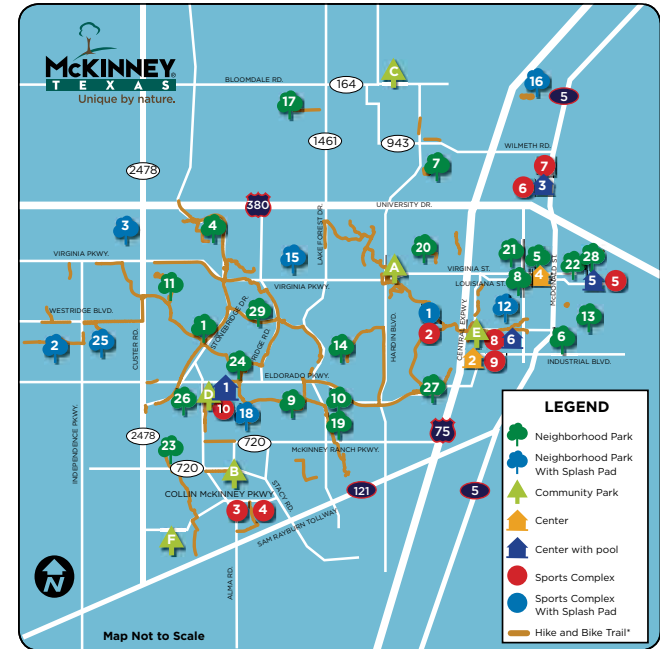
While many factors combine to make McKinney a truly special place, it’s the people of McKinney who bring these qualities to life. A community spirit is evident in a friendly, safe and inviting city that holds strong ties to its roots and cultural heritage. Additionally, the City enjoys robust economic development and diverse recreational amenities that compliment and expand its touted destination.

UPDATED PARKS MASTER PLAN

To keep McKinney's parks system as one of the city's cornerstones, Dunaway Associates was commissioned to work with the Parks Department and City Leaders in updating its 2017 Parks, Recreation and Open Space Master Plan (Parks Master Plan). This Parks Master Plan positions the City to be in front of future development, and to help interweave its great parks system into the fabric of the City and strategy for economic success. Through balanced parks and open space development, a visionary network of parks, facilities, and natural resources, McKinney will continue to be set apart as a premier community in the North Texas region.

Some of the major goals of the Parks Master Plan include:

- Keep developing new and creative park resources that will serve the various growth areas across the City
- Focus on strength reinvestment in existing parks in three key categories: restore, enhance, and reimagine
- Identify and maintain the City's natural resources for environmental stewardship and recreational enjoyment
- Coordinate the Parks Master Plan with the separate Trails Master Plan to expand the City's trail network throughout McKinney
- Identify key partnerships with public/public, public/private, and public/not for profits that can support both capital investments and long-term maintenance costs





OR

METHODOLOGY

Methodology

The Dunaway planning team worked closely with City staff and various groups during the entire master planning process. This included a Staff Advisory Group, the Park Board, and the Community Development Corporation. Each group was engaged by the team to provide input on the future direction and priorities for the entire parks system.

This update was prepared using a two-phase planning process. Phase I focused on the Inventory and Needs for the parks system. Phase II involved recommendations, implementations & preparation of the Master Plan documents. A detailed outline of the planning process is as follows:

PHASE I - INVENTORY & NEEDS



Data Collection & Base Mapping

A digital base map was prepared illustrating information such as existing park sites, schools, City facilities, drainage corridors, and streets using McKinney's GIS database.



Standards Analysis

The team utilized some of the published recommendations by the National Recreation and Park Association (NRPA), as well as local DFW criteria, for evaluating standards for both park acreages and facilities.



Inventory & Supply Analysis

A digital base map was prepared illustrating information such as existing park sites, schools, City facilities, drainage corridors, and streets using McKinney's GIS database.



Demand Analysis & Needs Assessment

A series of work sessions were utilized to determine the park and recreation needs of the community. From the feedback from City staff, CDC, Park Board, the team was able to quantify the specific needs for the parks system.



Population & Demographics

The City provided the team with the latest updates of demographic and population information for McKinney. This information included factors of population, race, housing, employment, income, and future growth.

PHASE II - MASTER PLAN



Priority Rankings

The team developed a priority criteria system for ranking high, moderate, and low priority needs. From this, a weighted priority ranking was established based upon input from the various sources.



Preliminary Master Plan

The team prepared the Preliminary Park Master Plan document outlining the entire process, findings, and recommendations. This included preparing exhibits/maps for the items recommended with the Action Plan.



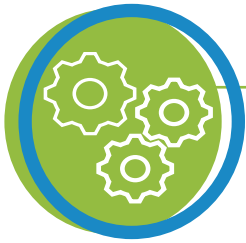
Action Plan

The team prepared specific recommendations in an Action Plan that outlines renovations and new development of parks and recreational facilities to meet current and future needs within the community.



Final Master Plan

The team prepared the Final Master Plan document. This task included final presentations to the City Council.



Implementation Plan

An Implementation Plan was developed for projected costs within the Action Plan. This included funding recommendations that could be utilized over the next 10 years.



04

PARKS INVENTORY

Parks Inventory



Over the years, the Parks Department staff have done an excellent job of keeping an up-to-date inventory of recreational amenities at each park site. This requires an ongoing effort, especially with the notable size and diversity of McKinney’s park system. Staff provided the Dunaway team with a full inventory of parks and indoor facilities, along with excellent photography of each park.

Utilizing this existing information, the Dunaway team was able to compile a complete inventory of all existing parks, recreation facilities and open spaces in the system. From this inventory, City staff and the Dunaway team toured all the park sites throughout McKinney. The following pages provide a summary inventory of the existing parks and recreational facilities throughout the City.





A. Hardy Eubanks, Jr. Park

Classification: Neighborhood Park

1501 Round Hill Road

Acres: 10.44



Park Amenities:

- Basketball Courts - 1
- BBQ Grills - 1
- Backstops - 1
- Practice Fields - 1
- Playgrounds - 1
- Jogging Trail - 0.4 mi
- Small Pavilions - 1
- Picnic Units - 12



Ash Woods Park

Classification: Neighborhood Park
10301 JFK Blvd
Acres: 10.7



Park Amenities:

- Basketball Courts - 1
- Practice Fields - 2
- Playgrounds - 1
- Jogging Trail - 0.4 mi
- Splash Pad - 1
- Small Pavilions - 1
- Picnic Units - 9
- BBQ Grills - 5
- Drinking Fountain - 1



Aviator Park

Classification: Neighborhood Park
1201 Monticello Dr
Acres: 10



Park Amenities:

- | | |
|--------------------------|-------------------------|
| Basketball Courts - 1 | BBQ Grills - 2 |
| Multi-Purpose Fields - 1 | Drinking Fountain - 1 |
| Playgrounds - 1 | Off Street Parking - 15 |
| Jogging Trail - 0.3 mi | |
| Splash Pad - 1 | |
| Small Pavilions - 1 | |
| Picnic Units - 4 | |

Carey Cox Memorial Park

Classification: Neighborhood Park
1611 N Stonebridge Dr
Acres: 10



Park Amenities:

- Parks Administration Offices
- Multi-Purpose Fields - 1
- Climbing Boulders - 1
- Playgrounds - 1
- Jogging Trail - 0.3 mi
- Small Pavilions - 1
- Off Street Parking - 19



Cottonwood Park

Classification: Neighborhood Park

212 McMakin St

Acres: 3.2



Park Amenities:

- Basketball Courts - 1
- Playgrounds - 2
- Pavilions - 2
- Multi-Purpose Field - 1
- Splashpad - 1
- Off Street Parking - 26



Crescent Park

Classification: Neighborhood Park
6240 Rundell Way
Acres: 2.2



Park Amenities:

- Walking Path
- Open Space
- Pedestrian Seating Plazas



Dr. Charles McKissick Park

Classification: Neighborhood Park
2702 Taylor-Burk Dr
Acres: 7



Park Amenities:

- Backstops - 1
- Multi-Purpose Fields - 1
- Playgrounds - 1
- Jogging Trail - 0.4 mi
- Small Pavilions - 1
- Picnic Units - 2
- BBQ Grills - 1
- Drinking Fountains - 1



Dr. Mack Hill Park

Classification: Neighborhood Park
1849 Reagan Dr
Acres: 16.9



Park Amenities:

- Multi-Purpose Fields - 1
- Playgrounds - 1
- Jogging Trail - 1.2 mi
- Splash Pads - 1
- Large Pavilions - 1
- Picnic Units - 5
- Memorial Monument
- Off Street Parking - 23



E.A. Randles Park

Classification: Neighborhood Park
5400 Cedar Elm Dr
Acres: 30



Park Amenities:

- Baseball Fields - 1
- Basketball Courts - 1
- Multi-Purpose Fields - 2
- Playgrounds - 1
- Small Pavilions - 1
- Picnic Units - 4
- Off Street Parking - 19



Falcon Creek Park

Classification: Neighborhood Park
301 Peregrine Dr
Acres: 11.6



Park Amenities:

- | | |
|--------------------------|-------------------------|
| Basketball Courts - 1 | BBQ Grills - 3 |
| Backstops - 1 | Drinking Fountain - 1 |
| Playground Units - 2 | Lakes or Ponds - 1 |
| Jogging Trail - 0.3 mi | Off Street Parking - 16 |
| Stocked Fishing Pond - 1 | |
| Small Pavilions - 1 | |
| Picnic Units - 6 | |



Fitzhugh Park

Classification: Neighborhood Park
700 Fitzhugh St
Acres: 1.2



Park Amenities:

- Basketball Courts - 1
- Multi-Purpose Fields - 1
- Playgrounds - 1
- Jogging Trail - 0.2 mi
- Small Pavilions - 1
- Picnic Units - 1
- BBQ Grills - 1
- Off Street Parking - 9

George Webb Park

Classification: Neighborhood Park

10450 Mill Bend Dr

Acres: 11.38



Park Amenities:

Basketball Courts - 1

BBQ Grills - 2

Multi-Purpose Fields - 1

Drinking Fountains - 1

Climbing Boulders - 2

Memorial Monument - 1

Playgrounds - 1

Jogging Trail - 0.4 mi

Small Pavilions - 1

Picnic Units - 7



Hill Top Park

Classification: Neighborhood Park
1850 Winding Brook Dr
Acres: 10.2



Park Amenities:

- Multi-Purpose Fields - 1
- Playgrounds - 1
- Small Pavilions - 1
- Picnic Units - 2



Horizon Park

Classification: Neighborhood Park
401 Flatrock Dr
Acres: 6



Park Amenities:

- Multi-Purpose Fields - 1
- Amphitheater - 1
- Playgrounds - 1
- Splash Pad - 1
- Small Pavilions - 1
- Picnic Units - 12
- BBQ Grills - 2
- Off Street Parking - 19



Inspiration Park

Classification: Neighborhood Park
4212 Shawnee Dr
Acres: 10



Park Amenities:

- Multi-Purpose Fields - 2
- Playgrounds - 1
- Jogging Trail - 0.5 mi
- Splash Pad - 1
- Small Pavilions - 1
- BBQ Grills - 1
- Off Street Parking - 15



Jim Ledbetter Park

Classification: Neighborhood Park
3212 Bluewood Dr
Acres: 10



Park Amenities:

- Basketball Court - 1
- Multi-Purpose Fields - 1
- Climbing Boulders - 1
- Playgrounds - 1
- Jogging Trail - 0.4 mi
- Small Pavilions - 1
- Picnic Units - 7
- BBQ Grills - 5

John M. Whisenant Park

Classification: Neighborhood Park
3701 Hudson Crossing
Acres: 9.9



Park Amenities:

- Multi-Purpose Fields - 2
- Playgrounds - 2
- Jogging Trail - 0.4 mi
- Splash Pad - 1
- Small Pavilions - 1
- Picnic Units - 3
- BBQ Grills - 1

Mary Will Craig Park

Classification: Neighborhood Park

2701 Bois D'Arc Rd

Acres: 10



Park Amenities:

Basketball Courts - 1

Backstops - 1

Multi-Purpose Fields - 2

Playgrounds - 1

Small Pavilions - 1

Picnic Units - 1

Off Street Parking - 16



Millie Cooper Park

Classification: Neighborhood Park
6100 Millie Way
Acres: 2.055



Park Amenities:

- Walking Paths
- Pedestrian Plazas



Murphy Park

Classification: Neighborhood Park
1601 W Josephine St
Acres: 1



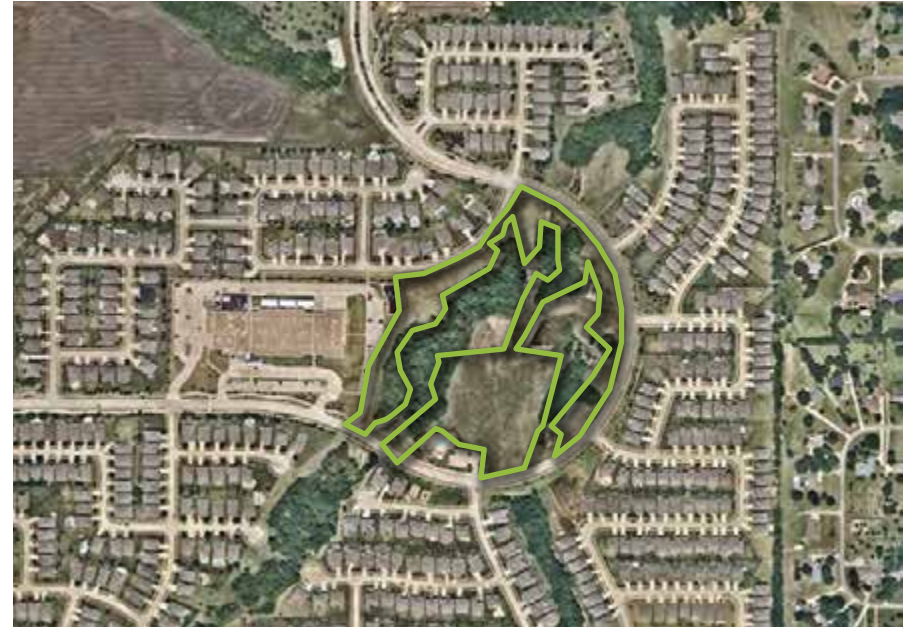
Park Amenities:

- Playgrounds - 1
- Small Pavilions - 1
- Picnic Units - 2



Prestwyck Park

Classification: Neighborhood Park
1617 Prestwick Hollow Dr
Acres: 10



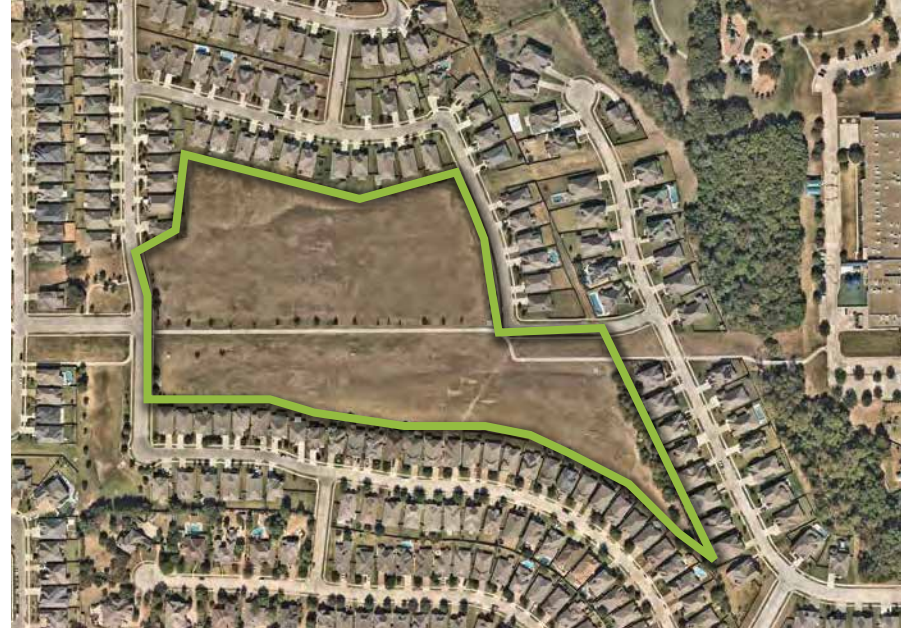
Park Amenities:

- Splashpad - 1
- Trail Loop - 1.22 mi
- Playground - 2
- Fitness Stations
- Pavilion - 1
- Basketball Court - 1
- Learning Stations



Robinson Ridge

Classification: Neighborhood Park
3900 Muscadine Dr
Acres: 15



Park Amenities:

Open Space



Rowlett Creek

Classification: Neighborhood Park
4200 Big Fork Trail
Acres: 20.7



Park Amenities:

- Multi-Purpose Fields - 1
- Playgrounds - 1
- Small Pavilions - 1
- Picnic Units - 6
- BBQ Grills - 2



Serenity Park

Classification: Neighborhood Park
6701 Bershire Rd
Acres: 16.8



Park Amenities:

- Backstops - 2
- Multi-Purpose Fields - 2
- Playgrounds - 1
- Stocked Fishing Pond - 1
- Fishing Pier - 1
- Small Pavilions - 1
- Picnic Units - 6
- BBQ Grills - 4
- Drinking Fountains - 1
- Lakes or Ponds - 1
- Off Street Parking - 21



Tom Allen, Jr. Park

Classification: Neighborhood Park
3301 Bahnman
Acres: 6



Park Amenities:

- Multi-Purpose Fields - 2
- Playgrounds - 1
- Jogging Trail - 0.4 mi
- Small Pavilions - 1
- Picnic Units - 6
- BBQ Grills - 1
- Off Street Parking - 44



Valley Creek Park

Classification: Neighborhood Park
2750 Valley Creek Trail
Acres: 5



Park Amenities:

- Backstops - 2
- Multi-Purpose Fields - 1
- Playgrounds - 1
- Small Pavilions - 1
- Picnic Units - 3
- Drinking Fountains - 1



W.B. Finney Park

Classification: Neighborhood Park
6350 Glen Oaks Dr
Acres: 13.3



Park Amenities:

- Basketball Court - 1
- Backstops - 2
- Multi-Purpose Fields - 2
- Playgrounds - 1
- Small Pavilions - 1
- Picnic Units - 4
- BBQ Grills - 3
- Drinking Fountains - 1



Wattley Park

Classification: Neighborhood Park
912 Charleston St
Acres: 9



Park Amenities:

- Basketball Court - 1
- Backstops - 1
- Multi-Purpose Fields - 1
- Playgrounds - 1
- Small Pavilions - 1
- Picnic Units - 3
- BBQ Grills - 1
- Off Street Parking - 15



Winniford Park

Classification: Neighborhood Park
4900 Highlands Dr
Acres: 6.98



Park Amenities:

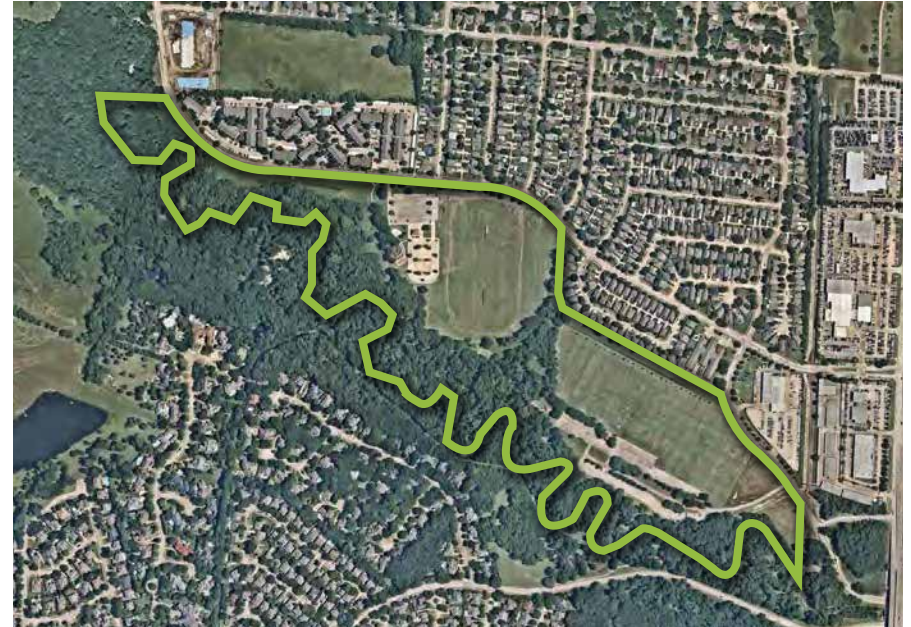
- Basketball Court - 1
- Multi-Purpose Fields - 1
- Playgrounds - 1
- Small Pavilions - 1
- Picnic Units - 3
- Drinking Fountains - 1
- Off Street Parking - 17

Al Ruschhaupt Soccer Complex

Classification: Community Park

1986 Park View Ave

Acres: 96



Park Amenities:

Soccer Fields - 5

Playgrounds - 1

Cricket - 2

Splash Pad - 1

Large Pavilions - 1

BBQ Grills - 16

Drinking Fountains - 2

Amphitheater - 1

Concession Building - 2

Restroom - 2

Off Street Parking - 684



Alex Clark Memorial Disc Golf Course

Classification: Community Park
1986 Park View Ave
Acres: 18



Park Amenities:

- Disc Golf Course - 1
- Sculpture - 1
- Memorial Monument - 1



Bonnie Wenk Park

Classification: Community Park
2996 Virginia Pkwy
Acres: 216



Park Amenities:

- | | |
|--------------------------|--------------------------------|
| Multi-Purpose Fields - 2 | Amphitheater/Stage - 1 |
| Playgrounds - 5 | Dog Park Amenities: |
| Jogging Trail - 3 mi | <i>Jogging Trail - 0.44 mi</i> |
| Stocked Fishing Pond - 1 | <i>Splashpad - 1</i> |
| Restroom - 2 | <i>Picnic Units - 9</i> |
| Off Street Parking - 251 | <i>Drinking Fountain - 2</i> |
| Handicap Parking - 6 | <i>Off Street Parking - 48</i> |
| | <i>Handicap parking - 2</i> |



Erwin Park

Classification: Community Park
4300 CR 1006
Acres: 212



Park Amenities:

- | | |
|-----------------------------|-------------------------|
| Mountain Bike Trail - 10 mi | BBQ Grills - 11 |
| Playgrounds - 1 | Drinking Fountain - 2 |
| Camping Sites - 10 | Memorial Monument - 1 |
| Pond - 1 | Bike Repair Station - 2 |
| Large Pavilions - 3 | Pump Track - 1 |
| Picnic Pavilion - 7 | Restroom - 2 |
| Picnic Units - 33 | Off Street Parking - 50 |



Finch Park

Classification: Community Park
301 W Standifer St
Acres: 32.4



Park Amenities:

- | | |
|------------------------------|-------------------------|
| Basketball Courts - 2 | Large Pavilions - 1 |
| Tennis Courts - 1 | Small Pavilions - 4 |
| Volleyball Courts (Sand) - 1 | Picnic Units - 32 |
| Playgrounds - 1 | BBQ Units - 10 |
| Splash Pad - 1 | Drinking Fountains - 2 |
| Jogging Trail - 0.81 mi | Restroom - 1 |
| Pickleball Courts - 8 | Off Street Parking - 88 |

Gabe Nesbitt Community Park

Classification: Community Park

7001 W Eldorado Pkwy

Acres: 160



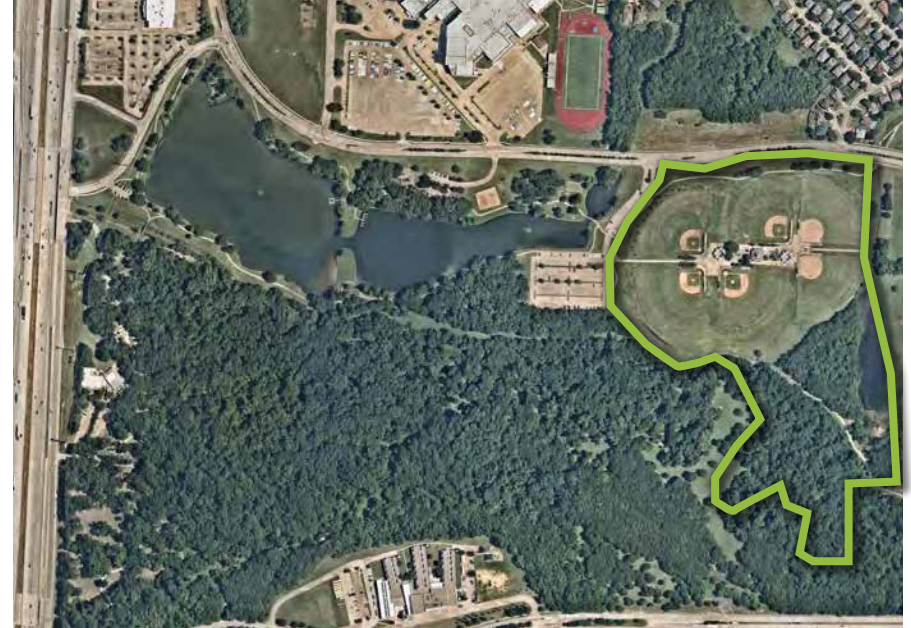
Park Amenities:

- | | |
|------------------------|------------------------------------|
| Baseball Fields - 5 | Concession Building - 2 |
| Softball Fields - 5 | Restrooms - 4 |
| Tennis Courts - 23 | Off Street Parking - 950 Apex |
| Playgrounds - 4 | Amenities: |
| Skatepark - 1 | <i>Jogging Trail - 0.44 mi</i> |
| Trail - 2.45 mi | <i>Basketball Indoor Court - 1</i> |
| Large Pavilions - 2 | <i>Fitness Center - 1</i> |
| Small Pavilions - 4 | <i>Indoor Tennis Courts - 6</i> |
| Picnic Units - 9 | <i>Library - 1</i> |
| Drinking Fountains - 8 | <i>PSA - 1</i> |
| Memorial Monument - 1 | <i>Fitness / Lap Pool - 1</i> |
| | <i>Leisure Pool - 1</i> |
| | <i>Concession Buildings - 1</i> |
| | <i>Restrooms - 1</i> |



Grady Littlejohn

Classification: Community Park
1405 Wilson Creek Pkwy



Park Amenities:

- Softball Fields - 6
- Playgrounds - 1
- Small Pavilions - 14



McKinney Soccer Complex at Craig Ranch

Classification: Community Park

6375 Collin McKinney Pkwy

Acres: 65



Park Amenities:

Soccer Fields - 13

Large Pavilions - 1

Small Pavilions - 4

Picnic Units - 10

Drinking Fountains - 2

Lakes or Ponds - 1

Concession Buildings - 1

Restrooms - 1

Off Street Parking - 936



North Park

Classification: Community Park
1701 N McDonald St
Acres: 15



Park Amenities:

- Baseball Fields - 2
- Restrooms - 1
- Off Street Parking - 63
- Juanita Maxfield Aquatic Center



Old Settler's Park

Classification: Community Park
1201 East Louisiana St
Acres: 29



Park Amenities:

- Playgrounds - 1
- Large Pavilions - 3
- Futsal/Basketball - 2
- Picnic Units - 11
- BBQ Grills - 4
- Drinking Fountains - 1
- Restroom - 2
- Off Street Parking - 200

- Old Settler's Recreation Center
- Old Settler's Aquatics Center
- Mouzon Ball Fields



Mouzon Ball Fields

Classification: Community Park
1307 E. Greenville



Park Amenities:

- Baseball Fields (Lighted) - 3
- Concession / Restroom
- Parking



Towne Lake Park

Classification: Community Park
1405 Wilson Creek Pkwy
Acres: 229.77



Park Amenities:

- Volleyball Courts (Sand) - 2
- Playgrounds - 1
- Horseshoe Pits - 9
- Disc Golf Course - 1
- Jogging Trail - 1.2 mi
- Stocked Fishing Pond - 1
- Fishing Pier - 1
- Sculpture - 1
- Large Pavilions - 3
- Picnic Units - 30
- BBQ Grills - 12
- Drinking Fountain - 3
- Concession Building - 2
- Restrooms - 2
- Off Street Parking - 328



Central Park

Classification: Special Use Park
105 W Hunt St
Acres: 0.5



Park Amenities:

- Small Pavilion - 1
- Picnic Units - 1
- Open Lawn



Crape Myrtle World Collection

Classification: Special Use Park
6452 Collin McKinney Pkwy
Acres: 7.2



Park Amenities:

Picnic Units - 2

Off Street Parking - 15



Creekside Park

Classification: Special Use Park
6135 Alma Rd
Acres: 2.3



Park Amenities:

- Gateway Monument - 1
- Pond - 1
- Linear Trail - 0.29 mi
- Picnic Shelters - 3



Day Labor Plaza

Classification: Special Use Park
120 Wilcox St
Acres: 0.5



Park Amenities:

- Shade Shelters w/ Seating - 5
- Off-Street Parking



Dr. Glenn Mitchell Memorial Park

Classification: Special Use Park

300 W Louisiana St

Acres: 1



Park Amenities:

Sculpture - 1

Memorial Monument - 1

Fountain - 1



Dwayne Howell Meditation Garden

Classification: Special Use Park
2001 S Central Expwy
Acres: 1



Park Amenities:

Meditation Garden
Nature Trail



Ezra Lee (Tinker Taylor) Memorial Park

Classification: Special Use Park
4301 W Eldorado Pkwy
Acres: 1.5



Park Amenities:

- Picnic Units - 2
- BBQ Grills - 1



K-9 Corral Dog Park

Classification: Special Use Park
7450 Van Tuyl Pkwy
Acres: 1



Park Amenities:

- Benches
- Picnic Tables - 10
- Fenced in Dog Park
- Lighting

Oak Hollow Golf Course

Classification: Special Use Park
3005 N McDonald St
Acres: 147



Park Amenities:

- Driving Range - 1
- Golf Holes - 18
- Small Pavilions - 1
- Concession Building - 1
- Restrooms - 3
- Off Street Parking - 132

Veterans Memorial Park

Classification: Special Use Park

6053 Weiskopf Ave

Acres: 1.5



Park Amenities:

Memorial Monument - 2

Fountain - 1

Walking Path

Benches





APEX Centre

Classification: Recreation Facility
3003 Alma Rd



Amenities:

- Party Rooms
- Indoor Gym
- Indoor Track
- Indoor/Outdoor Pool
- Ninja Warrior Course
- Fitness Area
- Playroom



Old Settler's Aquatic Center

Classification: Recreation Facility
1101 E. Louisiana St.



Amenities:

Outdoor Pool
Outdoor Pavilion
Restrooms/Showers



Old Settler's Recreation Center

Classification: Recreation Facility
1201 E. Louisiana St.



Amenities:

- Multi-purpose Gyms - 2
- Warming Kitchen
- Restrooms/Shower
- Activity Room
- Covered Outdoor Patio
- Multipurpose Rooms - 4



Recreation Center at Towne Lake

Classification: Recreation Facility
2001 S Central Expy
Acres: 60



Amenities:

- | | |
|-----------------------------|-------------------------|
| Basketball Indoor Court - 1 | Drinking Fountains - 2 |
| Racquetball Court - 2 | Off Street Parking - 83 |
| Fitness Center - 1 | |
| Nature Trail - 0.6 mi | |
| Playgrounds - 1 | |
| Picnic Units - 2 | |
| Meditation Garden - 1 | |

Senior Recreation Center

Classification: Recreation Facility
1400 College St
Acres: 28



Amenities:

- Fitness Center - 1
- Nature Trail - 0.1 mi
- Horseshoe Pits - 2
- Fitness / Lap Pool - 1
- Drinking Fountains - 2
- Off Street Parking - 120
- Billiards Room - 1
- Multi-Purpose Room - 2



Juanita Maxfield Aquatic Center

Classification: Recreation Facility
1701 N McDonald St
Acres: 6



Park Amenities:

- Leisure Pool - 1
- Picnic Units - 3
- Drinking Fountains - 1
- Concession Building - 1
- Restrooms - 1



Gray Branch

Classification: Community
1289 Gray Branch Rd
Acres: 219.25



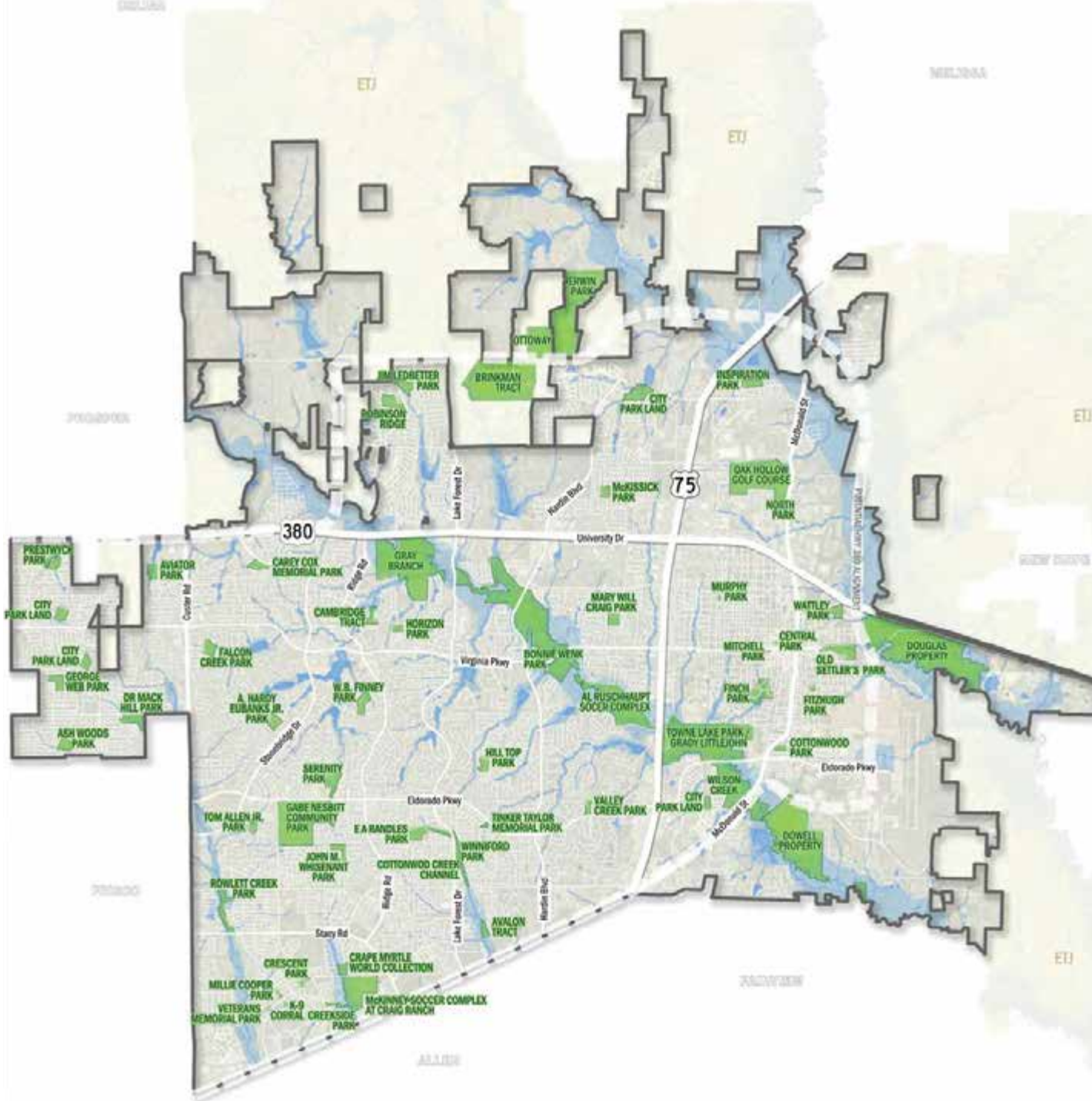
Park Amenities:

Nature Trail - 3.4 mi

Community Parks		Amenities														Aquatics				Passive / Support Facilities						Infrastructure																			
	Acres	Baseball Fields	Softball Fields	Basketball Court	Basketball Indoor Court	Soccer Fields	Backstops	Mult-purpose fields	Racquetball Courts	Tennis Courts	Volleyball Courts (Sand)	Pickleball Courts	Climbing Boulders/Rock Feat.	Mountain Bike Trail (miles)	Hike and Bike Trail (miles)	Nature Trail (miles)	Playground units	Horseshoe Pits	Driving Range	Golf Holes	Disc Golf Course	Jogging Trail	Cricket	Camping Sites	Stocked Fishing Pond	Fishing Pier	Splash Pad	Fitness/Lap Pool	Leisure Pool	Sculpture	Large Pavilions	Small Pavilions	Picnic Units	BBQ Grills	Drinking Fountains	Memorial Monument	Lakes or Ponds	Concession Bldg.	Restroom Bldgs	Off Street Parking	Handicapped Parking				
Al Ruschhaupt Soccer Complex	96					8											1						2				1						16	2			1	1	684						
<i>Alex Clark Memorial Disc Golf</i>	18																				1									1												S			
Bonnie Wenk	216							2									5							1												1	1			251	6				
<i>Bonnie Wenk Dog Park</i>																							0.4				1						9		2						48	2			
Erwin Park	212												9		1	1								10	1						3	7	57	11	2	1	1		2		50				
Finch Park	32.4			2						1	1	8			1	2											1				1	1	32	6	2				1		88	2			
Gabe Nesbitt Community Park	160																														1														
<i>Skatepark</i>																															4										114	5			
<i>Softball Complex</i>			5													1																					1	1			256	8			
<i>Baseball Complex</i>		5														1														1			9					1	1			155	4		
<i>The Courts at Gabe Nesbitt</i>										23						2																							2				98	2	
Old Settler's Park	29			2												1															1		8	2	1							50	4		
<i>Mouzon Baseball Fields</i>		3																																				1	1			150	8		
Towne Lake	229.77										2					1	9									1	1				1	2		30	14	2							72	3	
<i>Wilson Creek Softball</i>			6													1															2	14								1	1			256	5
<i>Towne Lake Disc Golf</i>																						1																							
Subtotal	993.17	8	11	4		8		2		24	3	8		9	1	1	16	9			2	4.6	2	10	3	1	3			2	12	26	145	49	21	3	3	6	12	2272	49				

Recreation Facilities		Amenities																Aquatics				Passive / Support Facilities						Infrastructure															
	Acres	Baseball Fields	Softball Fields	Basketball Court	Basketball Indoor Court	Soccer Fields	Backstops	Mult-purpose fields	Racquetball Courts	Tennis Courts	Volleyball Courts (Sand)	Pickleball Courts	Climbing Boulders/Rock Feat.	Mountain Bike Trail (miles)	Hike and Bike Trail (miles)	Nature Trail (miles)	Playground units	Horseshoe Pits	Driving Range	Golf Holes	Disc Golf Course	Jogging Trail	Cricket	Camping Sites	Stocked Fishing Pond	Fishing Pier	Splash Pad	Fitness/Lap Pool	Leisure Pool	Sculpture	Large Pavilions	Small Pavilions	Picnic Units	BBQ Grills	Drinking Fountains	Memorial Monument	Lakes or Ponds	Concession Bldg.	Restroom Bldgs	Off Street Parking	Handicapped Parking		
Recreation Center at Towne Lake	60			1				2			2					0.56	1																								83	3	
Old Settler's Recreation Center	5.8			2							3																															50	4
Old Settler's Aquatic Center	1.1																												1								1	1	29	2			
Senior Recreation Center	28															0.1	2																									92	4
<i>Senior Pool</i>																												1													28	4	
Juanita Maxfield Aquatic Center	6																															3						1	1		S		
Apex Centre				1																								1	1								1	1	327	9			
Subtotal	100.9			4				2			5					0.66	1	2										2	3				12	3	8			3	3	609	26		

EXISTING PARKS



- A. Hardy Eubanks, Jr. - 10.44 acres
- Al Ruschhaupt Soccer Complex - 96 acres
- Alex Clark Memorial Disc Golf - 18 acres
- Ash Woods - 10.7 acres
- Aviator - 10 acres
- Bonnie Wenk - 216 acres
- Brinkman Tract - 232 acres
- Carey Cox Memorial - 10 acres
- Central Park - 0.5 acres
- Cottonwood - 3.2 acres
- Crape Myrtle World Collection - 7.2 acres
- Crescent Park - 2.2 acres
- Day Labor Plaza - 0.5 acres
- Douglas Property - 356.54 acres
- Dowell Property - 269.53 acres
- Dwayne Howell Meditation Garden - 1 acre
- Dr. Charles McKissick - 7 acres
- Dr. Glenn Mitchell Memorial - 1 acre
- Dr. Mack Hill - 17.9 acres
- E. A. Randles - 30 acres
- Erwin Park - 212 acres
- Ezra Lee (Tinker) Memorial - 1.5 acres
- Falcon Creek - 11.6 acres
- Finch Park - 32.4 acres
- Fitzhugh - 1.2 acres
- Gabe Nesbitt Community Park - 160 acres
- George Webb - 11.38 acres
- Gray Branch - 219.25
- Hill Top - 10.2 acres
- Horizon - 6 acres
- Inspiration - 10 acres
- Jim Ledbetter - 10 acres
- John M. Whisenant - 9.9 acres
- Juanita Maxfield Aquatic Center - 6 acres
- K-9 Corral Dog Park - 1 acre
- Mary Will Craig - 10 acres
- McKinney Soccer Complex at Craig Ranch - 65 acres
- Millie Cooper Park - 1.3 acres
- Murphy - 1 acre
- North Park - 15 acres
- Oak Hollow Golf Course - 147 acres
- Old Settler's Park - 29 acres
- Ottoway - 70 acres
- Prestwyck - 10 acres
- Recreation Center at Towne Lake - 60 acres
- Robinson Ridge - 15 acres
- Rowlett Creek - 20.7 acres
- Senior Recreation Center - 28 acres
- Serenity - 16.8 acres
- Tom Allen, Jr. - 6 acres
- Towne Lake - 229.77 acres
- Valley Creek - 5 acres
- W. B. Finney - 13.3 acres
- Wattley - 9 acres
- Winniford - 6.98 acres
- Veterans Memorial - 1.5 acres



POPULATION & DEMOGRAPHICS

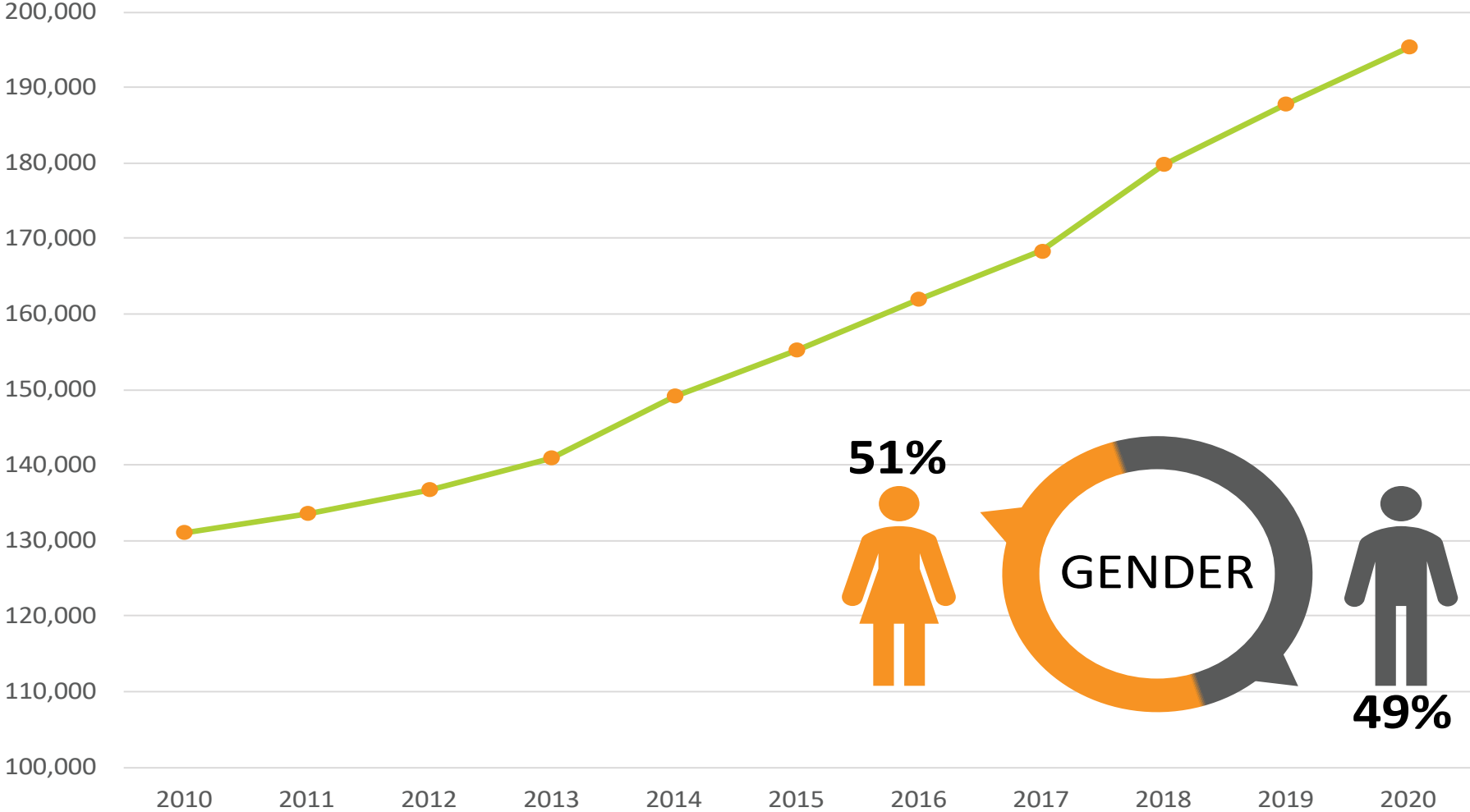
Population & Demographics



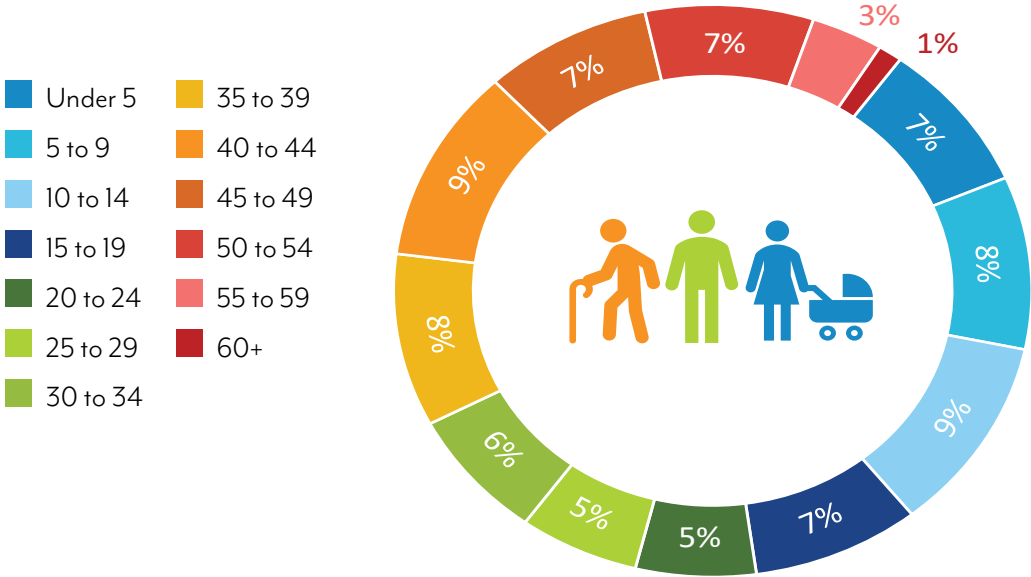
The population of a community can be evaluated in a variety of ways for purposes of park planning – both physically and socially. The offering of public parks and facilities is based in part on the consumption characteristics of the residents. This is certainly true in planning for recreational needs within McKinney. The location, size, and amenities of parks should be based on the density and distribution of the population as recipients of these services. In order to assist in forecasting the future park and recreation needs throughout the City, this section provides information on some particular characteristics of the McKinney today.

The population mix in McKinney has measurably changed over the past 10 to 15 years. As one of the fastest growing cities in America, McKinney has reached 214,035 residents, as of 2022. This has been seen through increased population in all sectors of town. McKinney also serves as the county seat for Collin County, which brings visitors to town year-round. This Parks Master Plan aims to meet the current and future demographic needs throughout McKinney’s park system.

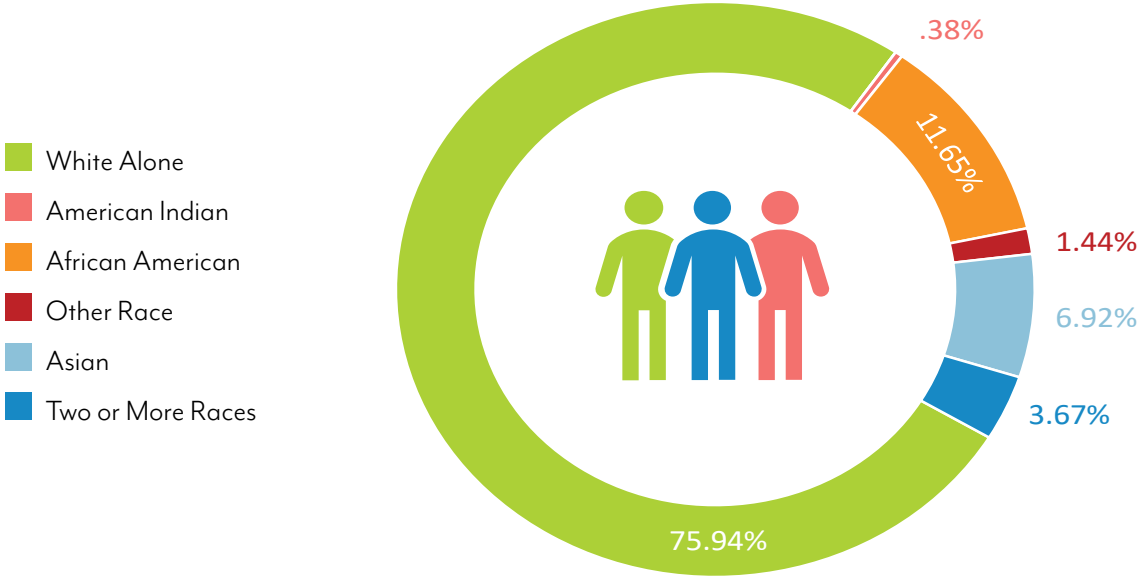
POPULATION GROWTH



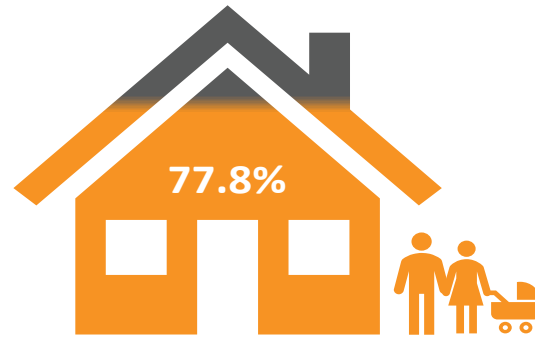
POPULATION BY AGE



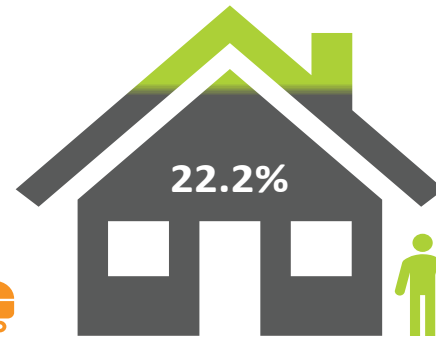
POPULATION BY SINGLE-CLASSIFICATION RACE



POPULATION BY HOUSEHOLDS



Family Households



Non-Family Households

HOUSING UNITS BY TENURE



67% Owner Occupied



33% Renter Occupied

MEDIAN RENT & MORTGAGE

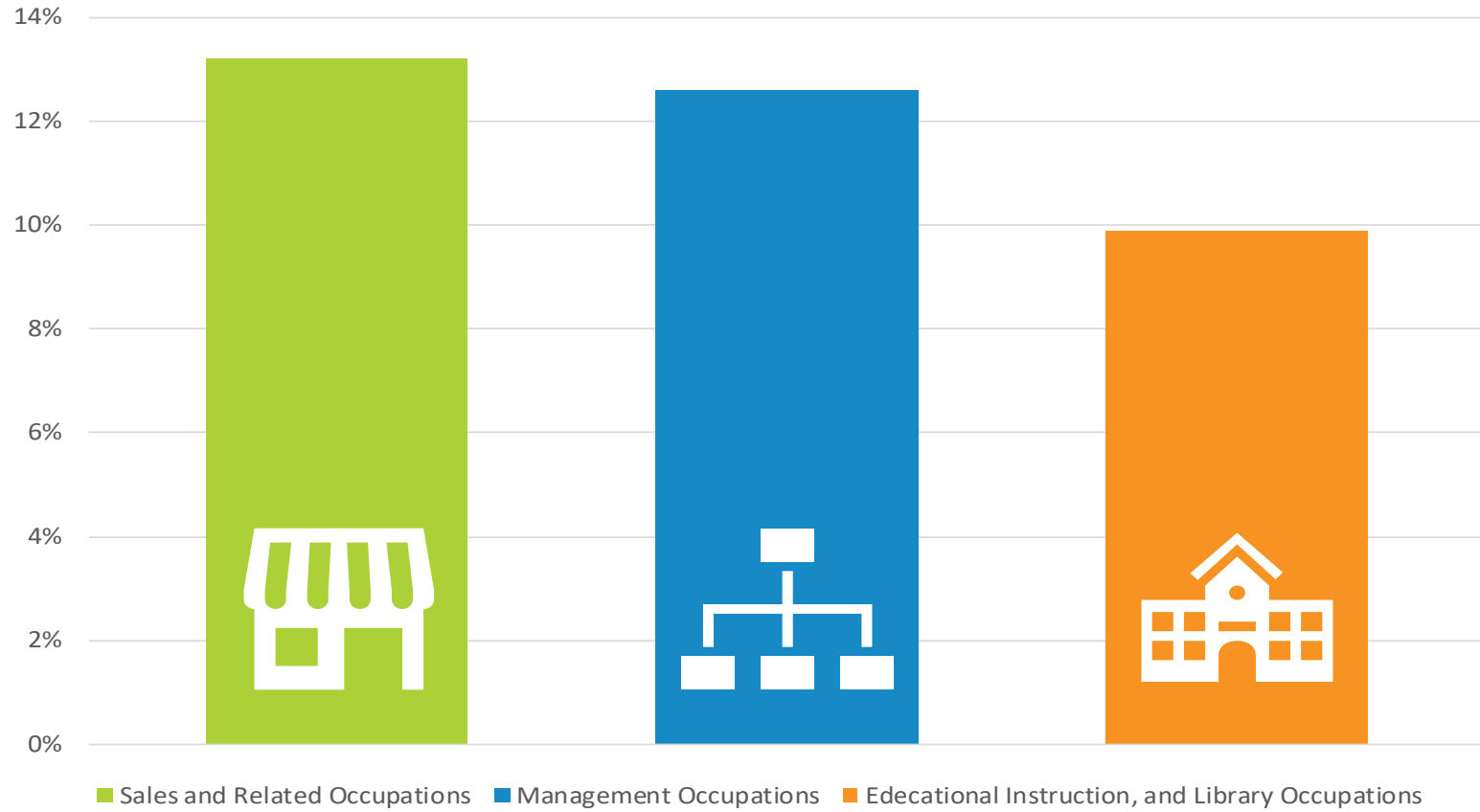


Median Rent



Median Mortgage

TOP OCCUPATIONS





STANDARDS

STANDARDS

When the Dunaway team evaluated the current park system in McKinney, it was important to understand the range of parks, facilities, and open space areas utilized for recreation. A key part of this evaluation was comparing the needs of the present population, as well as considering future growth expected. This Parks Master Plan includes some traditional standards established by the National Recreation and Park Association (NRPA), especially applicable to growing communities like McKinney.

The NRPA standards have been the most widely accepted and used standards throughout the United States for decades. This section includes a comparison of McKinney's current park system to NRPA standards based upon park acreage per population, as well as recreational facilities per population. Some additional criteria for the DFW area has also been applied for facility standards.

CRITERIA FOR STANDARDS

As acknowledged in their publications through the years, the NRPA recognizes the importance of establishing and using park and recreation standards as:

- A national expression of minimum acceptable facilities for the citizens of urban and rural communities
- A guideline to determine land requirements for various kinds of park and recreation areas and facilities
- A basis for relating recreation needs to spatial analysis within a community wide system of parks and open spaces
- One of the major structuring elements that can be used to guide and assist regional development
- A means to justify the need for parks and open space within the overall land use pattern of a region or community

The purpose of the NRPA standards is to present park and recreation space guidelines that are applicable for planning, acquisition, and development of parks systems. These standards should be viewed as a guide by those municipalities that use them. The standards are to be coupled with the expertise of park planners when evaluating a community to which they are applied. Variations in the standards can also be established to reflect the unique social and geographical conditions of the community.

PARK CLASSIFICATION SYSTEM

In analyzing McKinney's current parks and open space system, it is important to identify the functional classification of each of the City's parks. While each park in the City is unique in its own right, each can also be assigned to one of five (5) categories.

Neighborhood Parks are typically between 10 and 15 acres in size and serve their surrounding neighborhoods. These parks are usually accessible by walking or bicycling and are typically spaced based on a 1/4 to 1/2 mile service radius. Neighborhood parks constitute the core of the parks system and generally serve 3,000 to 4,000 residents. As a rule of thumb, most neighborhood parks may include benches, picnic tables, basketball courts, multi-purpose fields (for formal practice and/or informal play), and backstops.

Community Parks are larger than neighborhood parks, typically 25 to 100+ acres in size and have more amenities. Although these parks often serve specific neighborhoods, it is ideal to evenly distribute these parks across the City so that they are easily accessed by all residents. The ideal distribution is such that all residents are within a 1 to 2 mile radius of a community park. Typically, community parks will have all of the amenities of a neighborhood park (playgrounds, pavilions, open areas for free play, trails, basketball courts, multi-purpose practice fields, backstops, etc.), but with the addition of amenities such as lighted competitive athletic fields, larger areas of open space for free play, natural areas, and restrooms. Quite often, community parks will include special facilities such as recreation centers and skateboard parks.

Special Purpose Parks include 1 - 3 acre pocket parks, 1 - 2 acre trailheads, 0.25 - 1 acre plazas, athletic complexes, and practice fields. They also include "special interest" parks that are not otherwise part of another neighborhood or community parks. Examples of special purpose parks include dog parks, skate parks, or any other type of park designed to accommodate a limited number of specific recreation activities. While parks less than 5 acres are typically discouraged because they are often difficult to maintain efficiently, small park areas are often necessary to serve special purposes. Smaller parks are also desirable in urbanized areas, such as downtown.

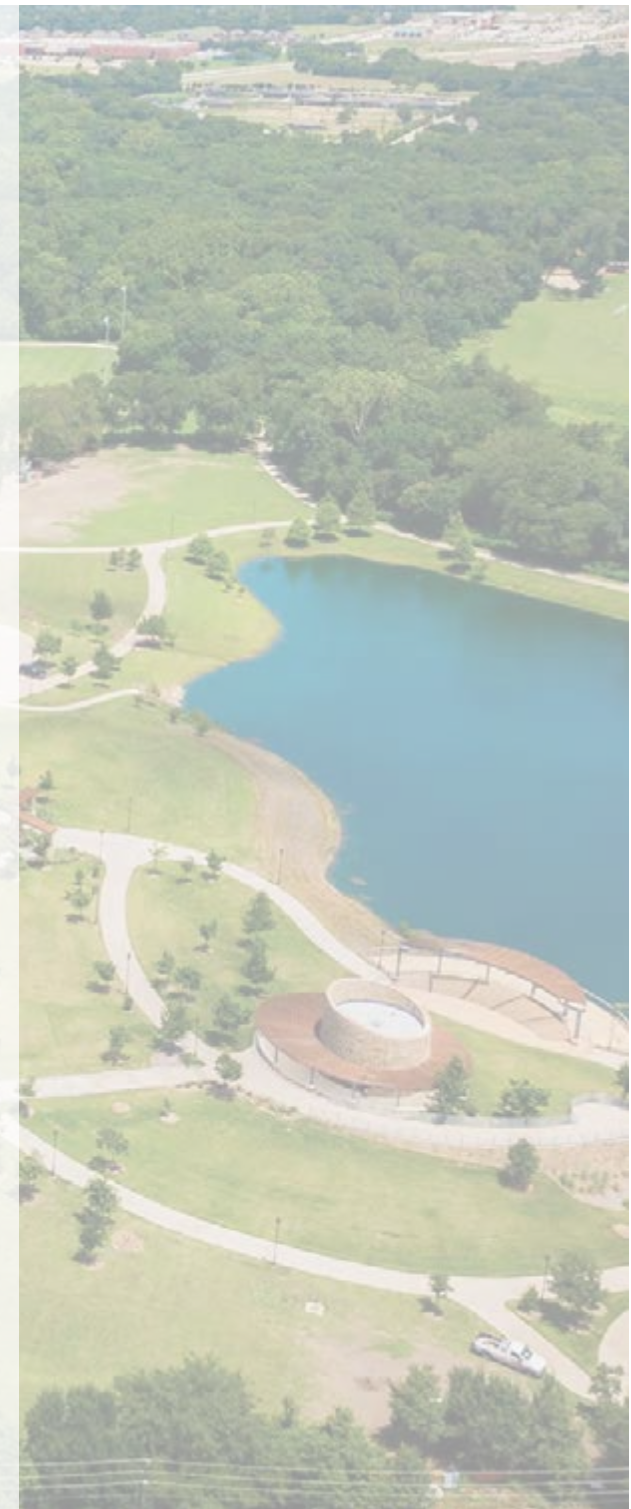
Linear Parks & Open Spaces are built connections or natural corridors that link parks together. Typically, the linear park is developed for one or more modes of recreational travel such as walking, jogging, biking, in-line skating, hiking, horseback riding, and canoeing. NRPA does not have any specific standards for linear parks other than they should be sufficient to protect the resources and provide maximum usage. Greenbelt corridors typically follow creeks, railroads, or utility lines and in unique situations as part of the roadway system. Greenbelts usually contain trails and are ideal for providing alternative, non-motorized transportation to parks, schools, neighborhoods, libraries, retail, and major destinations. Other than providing connections, these parks provide recreational value by themselves. In addition, greenbelts along creeks have the added benefit of providing habitat and migration/movement corridors for wildlife. They also provide opportunities for improving watershed management in an aesthetically pleasing and sustainable manner.

Regional Parks are very large multi-use parks that serve several communities within a particular region. They range in size from 100 to 500 acres (and above) and serve those areas within a one-hour driving distance. The regional park provides both active and passive recreation, with a wide selection of facilities for all age groups. They may also include areas of nature preservation for activities such as sight-seeing, nature study areas, wildlife habitat, and conservation areas. NRPA standards for regional parks vary due to the specific site and natural resources.

NRPA Park Acreage Guidelines

Type	Size/Acres	Service Area*	Acres per 1,000 Population
Neighborhood Park	1-15 Acres	One Neighborhood ¼ to ½ Mile Radius	1.0-2.0 ac/1,000
Community Park	16-99 Acres	Several Neighborhoods 1 to 2 Mile Radius	5.0-8.0 ac/1,000
Regional Park	500+	Several Communities Within 1 Hour Driving	Variable
Special Purpose Park	Varies Depending on Desired Size	No Applicable Standard	Variable
Linear Park & Open Space	Sufficient Width to Protect the Resource and Provide Maximum Usage	No Applicable Standard	Variable

* The graphic on page 89 illustrates the service areas of each park facility in McKinney's existing system.



NRPA Park Acreage Guidelines Compared to Current Population

Classification	Existing Acreage	NRPA Guidelines for 2022 Population of 206,650	Difference Between NRPA Guidelines and Existing McKinney Parks
		Range	Range
Neighborhood Park	267.91	206.65 - 413.3	61.26 - (145.39)
Community Park	993.17	1,033.25 - 1,653.2	(40.08) - (660.03)
Special Purpose Park	243.5	n/a	n/a
Linear Parks & Open Space	1,482.4	n/a	n/a
Total:	2,997.01	1,239.9 - 2,066.5	1,757.11 - 930.51

For the current population of approximately 206,650, McKinney is at or below standards for providing neighborhood and community parks. The total parkland acreage of McKinney exceeds the NRPA standard.

NRPA Park Acreage Guidelines Compared to Future Population (2029)

Classification	Existing Acreage	NRPA Guidelines for 2029 Population of 262,090	Difference Between NRPA Guidelines and Existing McKinney Parks
		Range	Range
Neighborhood Park	267.91	262.09 - 524.18	5.82 - (256.27)
Community Parks	993.17	1,310.45 - 2,096.72	(317.28) - (1,103.55)
Special Purpose Park	243.5	n/a	n/a
Linear Parks & Open Space	1,492.4	n/a	n/a
Total:	2,997.01	1,572.54 - 2,620.9	1,424.47 - 376.11

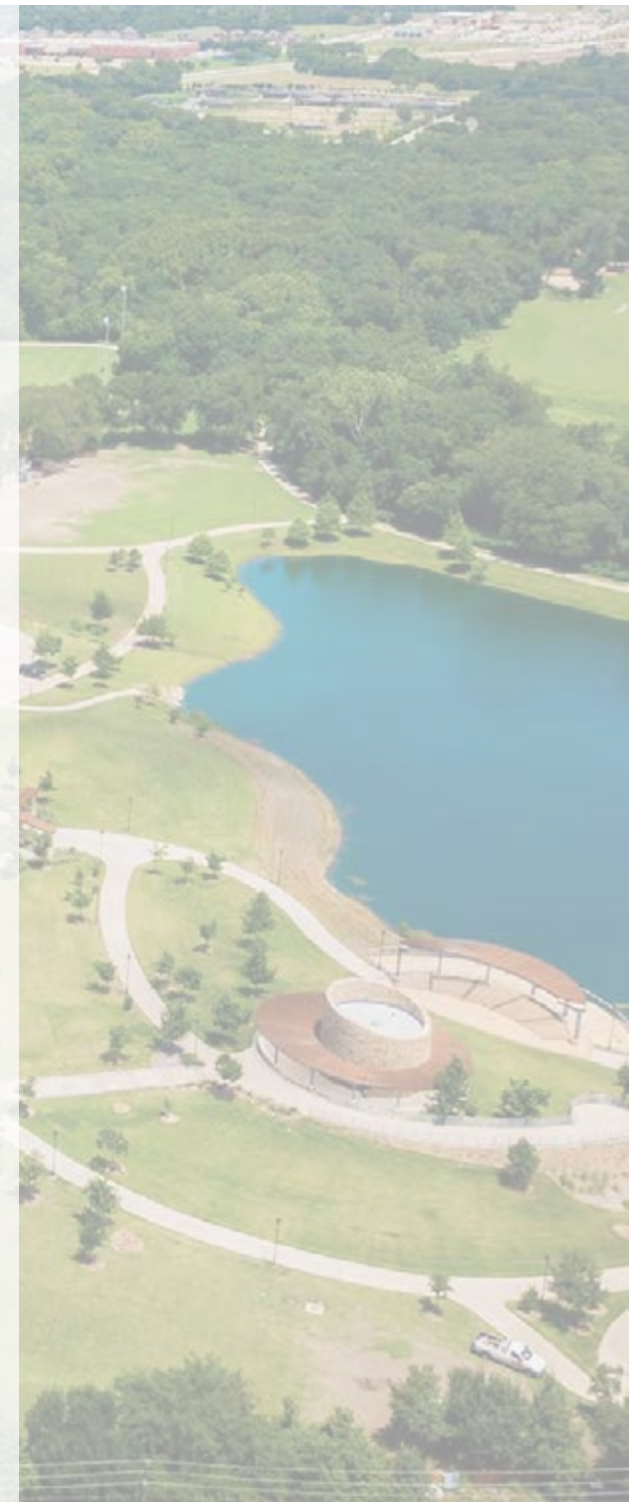
For the projected 2029 population of 262,090, McKinney is below standards for providing neighborhood and community parks. The total parkland acreage of McKinney will still exceed the NRPA standard in the projected 2029 estimates.

Facility Development Standards Applied to McKinney

Activity/Facility	Recommended Guidelines: Facilities Per Population	Existing Facilities in McKinney	Recommended Guidelines: Facilities for 2022 Population of 206,650	Recommended Guidelines: Facilities for Projected 2029 Population of 262,090
Baseball Fields	1 per 4,000 ¹	11	51	65
Basketball Courts (Outdoor)	1 per 5,000 ²	19	41	52
Pavilion/Picnic Shelter	1 per 3,000 ¹	73	69	87
Picnic Tables	1 table per 300 ²	263	689	873
Playgrounds	1 area per 1,000 ²	67	206	262
Recreation Center	1 SF per person ¹	170,000	206,650	262,090
Soccer Fields (League)	1 per 4,000 ¹	21	51	65
Softball Fields	1 per 4,000 ¹	11	51	65
Swimming Pool (Outdoor)	1 per 20,000 ²	5	10	13
Tennis Courts	1 court per 2,000 ²	24	103	131
Trails	1 mile per 4,000 ²	78	51	65
Volleyball Courts (Outdoor)	1 per 5,000 ²	3	41	52

¹ Dunaway recommendation for high use by Youth Sports.

² Facility guidelines from NRPA guidelines as well as DFW area standards.



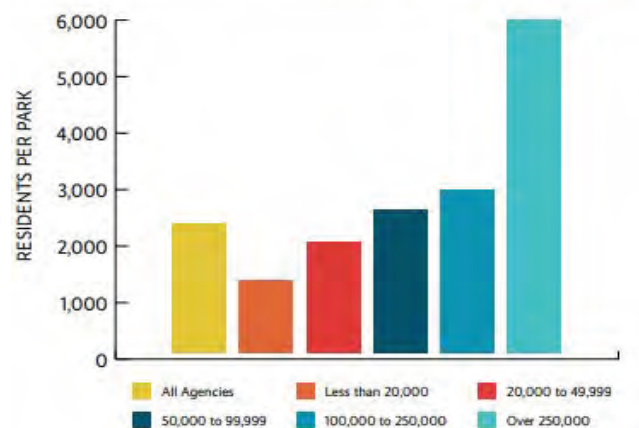
NRPA 2020 AGENCY PERFORMANCE REVIEW NATIONAL BENCHMARKING TOOL



NRPA Park Metrics is the most comprehensive source of data standards and insights for park and recreation agencies across the country. Agencies use these to compare their agency to others to gain more funding support, improve operations, and better serve their community. The following charts were from the National Recreation and Park Association 2020 Agency Performance Review.

Residents per Park

There is typically one park for every 2,281 residents.

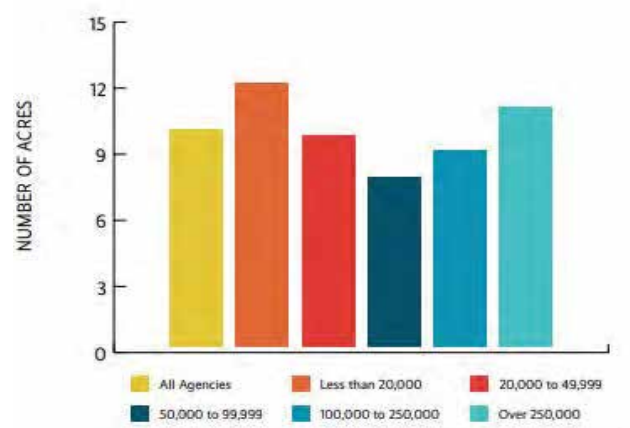


	All Agencies	Less than 20,000	20,000 to 49,999	50,000 to 99,999	100,000 to 250,000	Over 250,000
Median	2,281	1,300	1,963	2,523	2,889	5,908
Lower Quartile	1,316	908	1,233	1,560	1,914	2,818
Upper Quartile	4,140	2,037	3,140	4,518	5,135	15,286

McKinney currently has approximately 1 developed park per 4,130 residents as of 2022.

Acres of Parkland per 1,000 residents

The typical park and recreation agency has 9.9 acres of parkland per 1,000 residents in the jurisdiction



	All Agencies	Less than 20,000	20,000 to 49,999	50,000 to 99,999	100,000 to 250,000	Over 250,000
Median	9.9	12.0	9.6	7.7	8.9	10.9
Lower Quartile	5.1	5.2	5.4	4.7	5.0	5.3
Upper Quartile	17.1	20.8	15.0	17.1	14.9	17.9

McKinney currently has approximately 11 acres of parkland per 1,000 residents as of 2022.

Outdoor park and recreation facilities – Prevalence and Population per Facility

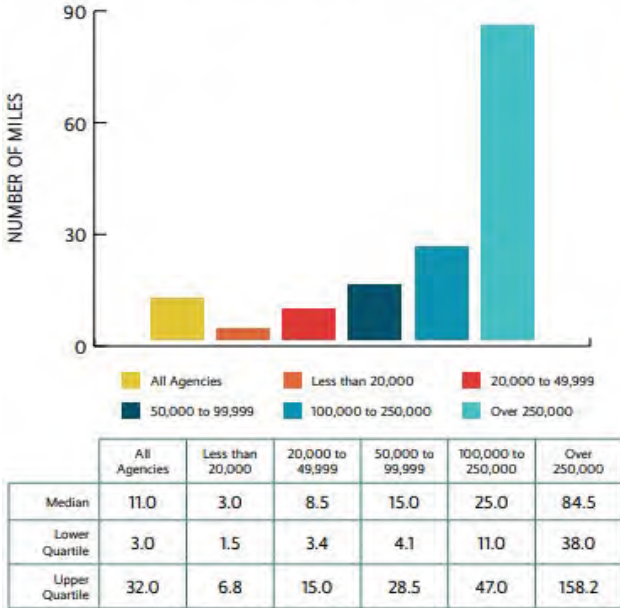
94% of agencies offer playgrounds and there is typically one playground for every 3,750 residents. Refer to page 93 for the facility standard comparison in McKinney.



Types of Facilities		Median Number of Residents per Facility					
	Percent of Agencies	All Agencies	Population of Jurisdiction				
			Less than 20,000	20,000 to 49,999	50,000 to 99,999	100,000 to 250,000	Over 250,000
Playgrounds	93.9%	3,750	2,523	3,157	3,859	4,623	8,291
Basketball courts	86.5	7,400	4,090	7,067	8,557	8,792	11,468
Tennis courts (outdoor only)	81.1	5,004	2,922	4,347	6,242	5,589	9,224
Diamond fields: baseball - youth	78.3	6,779	3,396	5,132	7,222	12,293	19,286
Diamond fields: softball fields - adult	64.8	13,510	5,072	10,849	15,500	26,714	30,511
Rectangular fields: multi-purpose	64.5	8,150	4,683	7,297	10,467	13,233	15,527
Dog parks	62.9	45,899	10,000	28,132	58,000	99,707	135,457
Diamond fields: softball fields - youth	59.0	11,511	5,691	9,785	12,000	23,220	44,398
Diamond fields: baseball - adult	52.8	19,518	7,804	17,185	22,876	47,754	46,196
Swimming pools (outdoor only)	50.9	35,837	8,023	25,107	45,825	64,250	84,884
Tot lots	47.6	11,173	6,998	10,900	11,200	20,715	27,284
Community gardens	47.2	29,273	7,914	22,562	50,000	66,645	102,625
Rectangular fields: soccer field - youth	46.9	7,325	3,294	4,833	9,085	12,875	29,559
Multiuse courts - basketball, volleyball	43.1	19,814	7,866	20,040	22,250	34,565	66,967
Rectangular fields: soccer field - adult	40.7	12,446	7,665	10,576	16,644	20,478	22,485
Skate parks	38.2	49,500	10,118	29,491	62,567	107,773	232,297
Rectangular fields: football field	37.2	26,771	7,500	16,971	32,420	44,580	114,831
Multi-purpose synthetic fields	19.4	49,493	8,530	22,000	51,110	61,250	118,791
Ice rinks (outdoor only)	17.4	18,526	9,860	13,542	29,830	122,902	422,692
Rectangular fields: lacrosse field	11.4	27,500	6,690	14,605	29,046	60,155	144,398
Rectangular fields: cricket field	11.0	133,045	ISD	29,228	59,227	105,715	389,255
Overlay fields	8.0	14,887	3,771	8,468	9,774	36,348	104,684
Rectangular fields: field hockey field	3.4	27,418	ISD	19,135	39,514	91,941	316,067

Miles of Trails

The typical park and recreation agency manages or maintains 11 miles of trails. McKinney currently has 70+ miles of trails that the city maintains.



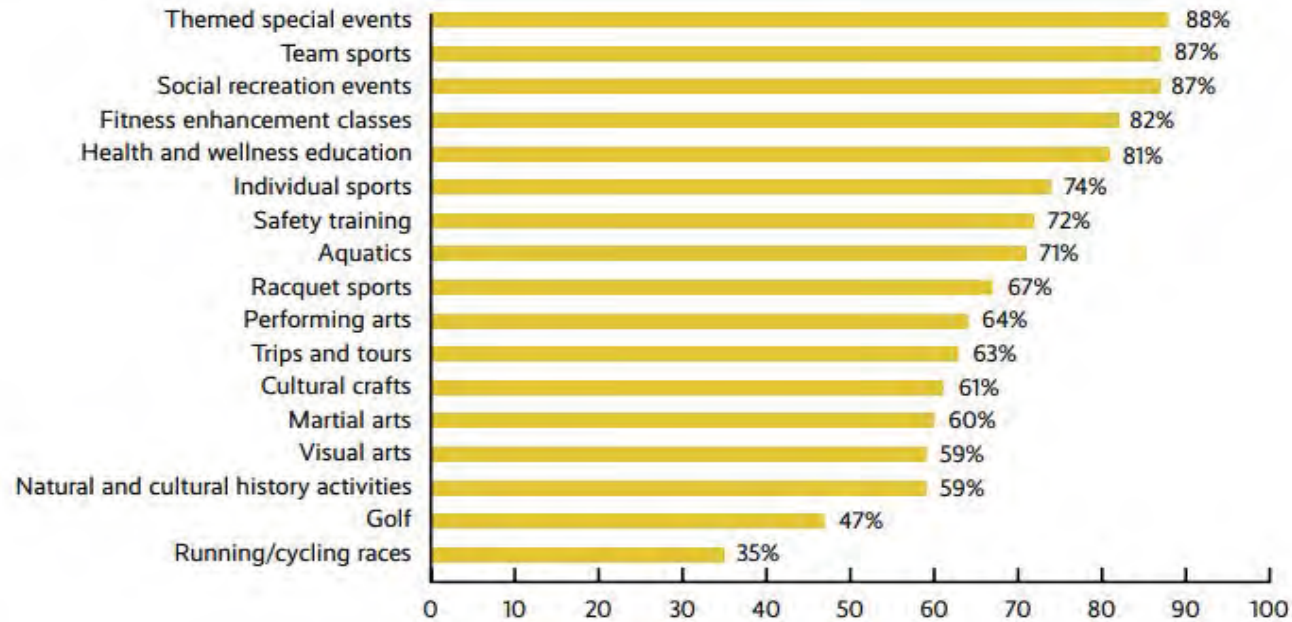
Indoor Park and Recreation Facilities – Prevalence and Population per Facility

61% of agencies have a recreation center and there is typically one recreation center for every 31,141 residents. McKinney currently has approximately one recreation center for every 51,660 residents.

Types of Facilities	Percent of Agencies	Median Number of Residents per Facility					
		All Agencies	Less than 20,000	20,000 to 49,999	50,000 to 99,999	100,000 to 250,000	Over 250,000
Recreation centers	61.0%	31,141	8,916	25,716	40,898	49,999	64,392
Community centers	59.7	28,939	9,601	26,280	42,491	54,042	93,302
Senior centers	40.9	60,513	12,209	32,639	68,701	123,988	318,255
Performance amphitheaters	35.0	62,475	10,812	30,577	57,304	112,611	385,525
Nature centers	29.3	109,796	10,816	35,854	65,000	125,000	381,434
Stadiums	17.9	66,972	8,625	24,910	59,074	134,557	321,434
Ice rinks	14.8	53,000	9,028	26,500	56,847	100,867	310,925
Teen centers	13.8	64,000	13,622	28,400	60,268	138,101	390,918
Arenas	7.5	57,711	8,148	24,736	61,556	110,168	405,201

Programming offered by park and recreation agencies

Nearly nine in ten agencies offer themed special events, team sports, and social recreation events.



Targeted programs for children, seniors, and people with disabilities

Nearly four in five agencies offer programs specifically targeted to seniors.

	Percent of Agencies	Less than 20,000	20,000 to 49,999	50,000 to 99,999	100,000 to 250,000	Over 250,000
Summer camp	83%	62%	89%	91%	89%	90%
Specific senior programs	78	66	78	86	86	79
Specific teen programs	65	48	64	73	71	77
Programs for people with disabilities	62	32	61	70	83	75
After-school programs	57	50	44	60	63	73
STEM programs	54	34	52	56	61	69
Preschool	36	25	43	40	39	33
Before-school programs	20	16	20	26	20	21
Full daycare	8	5	8	11	6	13

Key responsibilities of park and recreation agencies

Nearly nine in ten agencies operate and maintain indoor facilities.



Other responsibilities of park and recreation agencies

A third of all agencies operate, maintain, or contract tourism attractions, golf courses, and/or amphitheaters.

Operate, maintain or contract tourism attractions	34%
Operate, maintain or contract golf courses	33
Manage large outdoor performance amphitheaters	33
Operate, maintain or contract indoor swim facilities/water parks	31
Administer or manage farmers markets	19
Administer or manage tournament/event quality indoor sports complexes	18
Operate, maintain or contract campgrounds	18
Maintain, manage or lease indoor performing arts centers	17
Administer or manage professional or college-type stadiums/arenas/racetracks	9
Maintain or manage beaches (inclusive of all water-body types)	9
Manage or maintain fairgrounds	5
Operate, maintain or contract marinas	5

An aerial photograph of a park featuring a large, calm lake in the center. The lake is surrounded by dense green trees and grassy areas. In the foreground, a paved road curves along the left side of the lake, with a few cars parked. The background shows a residential neighborhood with houses and more trees. Overlaid on the right side of the image is a large, stylized number '07' in a light green color with a darker green outline.

07

NEEDS ASSESSMENT

Needs Assessment



A primary focus in preparing this updated Parks Master Plan was to conduct a needs assessment that clearly identified priorities for the overall park system. To this end, the Dunaway team and City staff facilitated a series of key meetings to get input on the desires and needs for park improvements throughout McKinney.

The first step involved interacting with Parks and Recreation staff in a series of discussions about the current state of the parks system and the range of future needs. City staff also shared with the Dunaway team the previous citizen survey information related to parks and recreation. From this information, Dunaway then facilitated a work session with staff to get specific input on park needs in McKinney over the next 5 to 10 years.

The next step involved the Dunaway team interacting (in a virtual meeting) with the Park Board and McKinney Community Development Corporation on current trends in recreation that are impacting McKinney. Both groups shared their thoughts on park needs in an open discussion, with City staff in attendance to interact with the group.

The final step involved the specific ranking of priorities for both outdoor and indoor recreation. Separate rankings were performed by the Park Board, Community Development Corporation, City staff, and the Dunaway team. These priorities were reviewed and confirmed in a follow-up meeting with all parties. This overall process led to clear priorities for McKinney's parks system over the next five to ten years.

SAMPLE PRIORITY ITEMS

As a starting point, the Dunaway Team provided the city a list of park program items to be considered within McKinney's park system. This list became the basis for the city identifying priority needs for future development.

- Splashpad / Sprayground
- Aquatic Center (Indoor)
- Aquatic Center (Outdoor)
- Multi-Generational Center
- Additional Recreation Center
- Hike & Bike Trails
- Soft Nature Trails
- Paddling Trails
- Baseball Fields
- Softball Fields
- Soccer Fields
- Lacrosse Fields
- Rugby Fields
- Cricket Fields
- Basketball Courts (Outdoor)
- Tennis Courts
- Football Field Golf Course
- Batting Cages
- Multipurpose Sports Fields
- Additional Practice Fields
- Sand Volleyball Courts



- Golf Course
- Batting Cages
- Multipurpose Sports Fields
- Additional Practice Fields
- Sand Volleyball Courts
- Pickleball Courts
- Disc Golf Course
- Additional Lighting in Parks
- Playgrounds
- Shade to Park Playgrounds
- Pavilions
- Picnic Areas
- Special Event Infrastructure
(*Stage, Power, Audio, Wi-Fi, etc*)
- Benches / Seating Areas
- Amphitheater
- Outdoor Exercise Equipment
- Restrooms
- Pond with Fishing Pier
- Dog Park
- Skate Park
- Community Gardens
- Nature Center / Nature Preserve
- Open Space / Natural Areas

- Wildlife / Plant Education Stations
- Camping Facilities
- Equestrian Center & Trails
- Mountain Bike / BMX Stations
- Added Shade in Parks
(*Trees, Covered Picnicking, Bleachers, etc.*)
- Public Art





PRIORITY RANKINGS



Priority Rankings

At the completion of the needs assessment phase, a method of ranking priorities was implemented. This method included using specific input from the Park Board, Community Development Corporation, City Staff, and the Dunaway team.

The following weighted values were assigned to each:

Park Board (35%)

The specific needs and requests by the Park Board based upon regular insight and guidance for McKinney's overall parks system

Community Development Corporation (35%)

The specific parks and recreation needs in McKinney as identified by the appointed Community Development Corporation

City Staff (20%)

The specific needs as identified by City staff based upon park resources, recreation programs, and demands upon resources

Dunaway Team (10%)

The specific recommendations by the Dunaway team based upon assessing the unique needs of the McKinney community, current park resources, demographic profile, and growing trends for recreational resources

The results of the priority ranking were tabulated into three categories: High Priority, Moderate Priority, and Low Priority. The tables on the following pages provide a summary of these priorities for McKinney.

Priority Rankings - Outdoor Facilities

Rank	High Priorities	High	Rank	Moderate Priorities	Moderate
1	Trails	◆	14	Playgrounds	◆
2	Downtown Park	◆	15	Learning Center	◆
3	Multi-Use Fields	◆	16	Dog Park	◆
4	Lighting in Parks	◆	17	Public Art	◆
5	Restroom / Concessions	◆	18	Fishing Piers	◆
6	Outdoor Fitness	◆	19	Technology in Parks	◆
7	Shade Structures	◆	20	Waterpark	◆
8	Special Events	◆	21	Softball Fields	◆
9	Pavilions	◆	22	Baseball Fields	◆
10	Wayfinding / Signage	◆			
11	Nature Preserve	◆			
12	Practice Fields	◆			
13	Soccer Fields	◆			

Priority Rankings - Indoor Facilities

Rank	High Priorities	High	Rank	Moderate Priorities	Moderate
1	Expand Recreation Center	◆	3	Indoor Athletic Center	◆
2	Adult / Senior Center	◆	4	Nature & Event Center	◆
			5	New Recreation Center	◆

An aerial photograph of a park. In the upper left, there is a green basketball court with white lines. Below it is a playground with a large green canopy and various play structures. The park is surrounded by green grass, trees, and paved walkways. A road is visible on the left side. Overlaid on the right side of the image is a large, stylized number '09' in a light green color with a darker green outline.

09

IMPLEMENTATION

Implementation



McKinney has been a leading community in North Texas for both the quality and diversity of its parks system. This has been seen in building and maintaining a park system that coincides with its quality of life. In order to keep this going in the future, City staff and leaders realize the importance of outlining an organized strategy for funding capital improvements across the entire park system. It will take a collective effort by staff and elected officials to keep up with new park development, as well as reinvestment in older parks.

To fund the various capital improvements throughout the City on an annual basis, McKinney has the opportunity to pursue a wide range of other funding sources to bolster the City's financial resources. Some of the sources could be part of the overall implementation budgets, realized through shared capital costs and even long-term partnerships for operation and maintenance costs. Great park systems across the country use these creative sources in maintaining an exceptional parks system.

Each park and its program for improvements has been broken out in three (3) categories – Restore, Enhance, and Re-imagine. These categories address the following:

Restore: provide new investment to update dated park features that are beyond their life cycle

Enhance: provide new and updated park elements to expand the recreational offerings within the park

Re-imagine: create a completely new vision and program for redevelopment of the park

POSSIBLE FUNDING SOURCES

1. Advertising

This funding source comes from the sale of advertising on park and recreation related items such as the city's program guide, on scoreboards, and other visible products or services.

2. Corporate Sponsorships

This funding source comes from corporations that invest in the development or enhancement of new or existing facilities. Sponsorships are also successfully used for special programs and events.

3. Collin County Project Funding Assistance

This funding source assists local jurisdictions in advancing parks & trails developments. The project's proposed goals must be similar to and advance the mission in the Collin County Parks and Open Space Strategic Plan.

4. Fees / Charges

This funding source comes from fees for use of a facility or participation in a city sponsored recreational program.

5. Foundations / Gifts

This funding source comes from tax-exempt organizations who give donations for specific facilities, activities, or programs. These may include capital campaigns, fundraisers, endowments, sales, etc.

6. General Fund

This funding source can provide for annual capital programs, improvements, and infrastructure upgrades.

7. General Obligation Bonds

This funding source comes from bond programs approved by the citizens for capital improvements within the parks system.

8. Grants - TPWD Outdoor Program

This funding source comes from grants for the acquisition and development of outdoor recreational facilities.

9. Grants - TPWD Recreational Trails Program

This funding source comes from grants for the development of new trails or trail extensions.

10. Grants - Transportation Enhancement

This funding source comes from grants for the development of new trails or trail extensions (TCOG / TXDOT).

11. Interlocal Agreements

This funding source comes from contractual agreements with other local units of government for the joint-use of indoor or outdoor recreational facilities.

12. Irrevocable Trust

This funding source comes from individuals who leave a portion of their wealth for a trust fund. The fund grows over a period of time and is available for the city to use a portion of interest to support specific park facilities as designated by the trustee.

13. Land Trusts

Land trusts provide a valuable service to municipalities across the country in helping to acquire natural areas, open space, and other land for public use. Typically, land trusts not only assist in funding land acquisition but also assist in managing the transaction and financing. Often, each land trust will have a specific set of requirements for the types of land they are willing to help acquire and/or how that land will be used. The Texas Land Trust Council can be contacted for more information.

14. Naming Rights

This funding source comes from leasing or selling naming rights for new indoor facilities or signature parks.

15. Parkland Dedication

This funding source comes from private developers who give land or money for public parks.

17. Park Improvement Fees

This funding source comes from fees assessed for the development of residential properties with the proceeds to be used for the development of parks and recreation centers.

18. Partnerships

This funding source comes from public/public, public/private, and public/not-for-profit partnerships.



19. Permits (Special Use Permits)

This funding source comes from allowing other parties to use specific park property that involves financial gain. The city either receives a set amount of money or a percentage of the gross from the service that is being provided.

20. Private Donations

This funding source comes from private party contributions including funds, equipment, art, and in-kind services.

21. Reservations

This funding source comes from revenue generated from reservations of parks and facilities. The reservation rates are fixed and apply to group shelters, meeting rooms, and sports fields.

22. Revenue Bonds

This funding source comes from bonds used for capital projects that will generate revenue for debt services where fees can be set aside to support repayment of the bond.

23. Safe Routes to School (SRTS)

ISRTS is associated with the FAST Act as a set-aside program under the Surface Transportation Block Grant Program (STBG). SRTS funds are meant to assist local municipalities in funding projects that improve connectivity and access to schools. Eligible bicycle and pedestrian projects include bicycle lanes, crosswalks, separated bicycle lanes, and signed bicycle routes, among others.

24. Sales / 4B Tax (1/2 Cent)

This funding source is McKinney's primary funding source that comes from a voter approved sales tax that goes toward parks and recreational improvements.

25. Special Fundraisers

This funding source comes from annual fundraising efforts to help toward specific programs and capital projects.

26. Tax Increment Financing / Public Improvement Districts

These related tools allow a development district to divert a portion of its property taxes to fund infrastructure improvements within its area. This can include plazas, pocket parks, linear parks, and other types of facilities.

27. Tree Mitigation Funds

The source of such a fund results when a city levies fines against developers for removing quality trees for development. The revenue generated is used to plant trees and to irrigate city properties, thereby enhancing the community.

28. Volunteerism / In-Kind Donations

This funding source provides indirect revenue support when groups or individuals donate time to help construct specific park improvements (signs, playgrounds, nature trails, etc.)



DESCRIPTIONS FOR ACTION PLAN PRIORITIES

HIGH PRIORITY ITEMS

1 TRAILS

As the top priority, expand trail offerings within parks and throughout the entire community. Some existing parks can benefit from new trail connections or loops to serve daily users. Place high priority on the preservation and conservation of drainage corridors including the beautiful Wilson Creek. As future parks get developed, provide new trails in neighborhood parks, community parks, and greenbelt corridors.

2 DOWNTOWN PARK

Add a new downtown park that strategically supports the civic and economic activities year-round. This park can host festivals and events for local residents and tourists.

3 MULTI-USE FIELDS

As space allows, add new multi-use fields into existing parks. These help serve various sports groups that require different size fields.

4 LIGHTING IN PARKS

New lighting in parks can include sports field lighting, security lighting, parking lot lighting, recreation area lighting, and lighting of high-use trail areas.

5 RESTROOM/CONCESSION

Add and/or upgrade restroom/concession buildings to serve sports complexes and high-use parks. These buildings can also be designed to complement the theme of the overall park.

6 OUTDOOR FITNESS

In select areas, add outdoor fitness stations for daily park users. These are very popular along trails for specific training and exercise.

7 SHADE STRUCTURES

Adding shade structures can include new shade over playgrounds and group areas, to shade at trailheads and plazas.

8 SPECIAL EVENTS

New infrastructure for special events can include electrical services, great lawn areas, performance pads/stages, and service access for vehicles.

9 PAVILIONS

New pavilions can range from small structures in neighborhood parks, to larger group pavilions to accommodate sizeable groups for weddings, reunions, and birthdays. Pavilions can also be rentable, helping cover annual O&M costs.

10 WAYFINDING/SIGNAGE

New signage in parks can serve many benefits including entry monuments, park information, interpretative areas, trail routing, and strong branding for the entire park.

11 NATURE PRESERVES

Provide a nature preserve for enjoyment of beautiful resources in McKinney. Preservation of natural areas helps maintain riparian habitats, reduce problems with flooding, expand nature education, and offer immersive experiences for visitors.

12 PRACTICE FIELDS

Add practice field areas in existing parks where space will allow. This helps distribute useable areas throughout the City for various sports groups.

13 SOCCER FIELDS

Add new lighted soccer fields in sports complexes, large enough to allow different striping for certain field sizes.

MODERATE PRIORITY ITEMS

14 PLAYGROUNDS

Add new playgrounds within new park developments, and updated playgrounds as required in existing parks.

15 LEARNING STATIONS

Add interpretive learning stations in natural areas, along portions of trails, and in parks that have unique cultural history.

16 DOG PARK

Update existing dog parks and selectively add new dog parks in appropriate park settings within the City.

17 PUBLIC ART

Add creative public art in various forms to existing parks and new park developments. This includes individual pieces, interactive spaces, wall murals, and annual local artist displays.

18 FISHING PIERS

Add fishing piers in parks that have sizable ponds or lakes. These can also serve as scenic lookouts along continuous trail systems.

19 TECHNOLOGY IN PARKS

Continue to add provisions for technology in parks throughout the City, including Wi-Fi and public information links for park users.

20 WATERPARK

Add a new outdoor waterpark for full range aquatic recreation.

21 SOFTBALL FIELDS

Upgrade existing softball fields in sports complexes, and add new softball fields in future large park developments.

22 BASEBALL FIELDS

Upgrade existing baseball fields in sports complexes, and add new baseball fields in future large park developments.

A. Hardy Eubanks, Jr. Park

Classification: Neighborhood Park

Acres: 10.44

Address: 1501 Round Hill Rd

Last Update: 2020 (new playground/pavilion renovation)

Purpose of the Park:

This park provides neighborhood recreation and joint use activities with Bennet Elementary School (MISD).



CIP Summary

Master Plan	DD / CD	Restore	Enhance	Re-Imagine	Review
No	No		✓	✓	NA

Summary of Priorities

Restore	Enhance	Re-Imagine
	<p><i>High Priority Items</i></p> <p>6 Outdoor Fitness</p> <p><i>Moderate Priority Items</i></p> <p>19 Technology in Parks</p>	<p><i>Moderate Priority Items</i></p> <p>17 Public Art</p>
Estimated Budget Range: Not Applicable	Estimated Budget Range: \$100,000	Estimated Budget Range: \$40,000

Ash Woods Park

Classification: Neighborhood Park

Acres: 10.7

Address: 10301 JFK Blvd

Last Update: 2016 (pedestrian bridge added)

Purpose of the Park:

This park provides neighborhood recreation and joint use activities with Mooneyham Elementary School (FISD).



CIP Summary

Master Plan	DD / CD	Restore	Enhance	Re-Imagine	Review
No	No	✓	✓	✓	NA

Summary of Priorities

Restore	Enhance	Re-Imagine
<i>High Priority Items</i>	<i>High Priority Items</i>	<i>High Priority Items</i>
4 Lighting in Parks	6 Outdoor Fitness	10 Wayfinding / Signage
12 Practice Fields	7 Shade Structures	<i>Moderate Priority Items</i>
	9 Pavilions	15 Learning Station
	<i>Moderate Priority Items</i>	17 Public Art
	19 Technology in Parks	
Estimated Budget Range: \$200,000	Estimated Budget Range: \$300,000	Estimated Budget Range: \$100,000

Aviator Park

Classification: Neighborhood Park

Acres: 10

Address: 1201 Monticello Dr

Last Update: 2008 (constructed)

Purpose of the Park:

This park provides neighborhood recreation.



CIP Summary

Master Plan	DD / CD	Restore	Enhance	Re-Imagine	Review
No	No	✓	✓	✓	NA

Summary of Priorities

Restore	Enhance	Re-Imagine
<i>High Priority Items</i>	<i>High Priority Items</i>	<i>Moderate Priority Items</i>
4 Lighting in Parks	6 Outdoor Fitness	17 Public Art
12 Practice Fields	7 Shade Structures	
	<i>Moderate Priority Items</i>	
	19 Technology in Parks	
Estimated Budget Range: \$200,000	Estimated Budget Range: \$130,000	Estimated Budget Range: \$40,000

Carey Cox Memorial Park

Classification: Neighborhood Park

Acres: 10

Address: 1611 N Stonebridge Dr

Last Update: 2010

Purpose of the Park:

This park provides neighborhood recreation, joint use activities with Wilmeth Elementary School (MISD), and serves as the location of the Parks & Recreation Administration Offices.



CIP Summary

Master Plan	DD / CD	Restore	Enhance	Re-Imagine	Review
No	No	✓	✓	✓	NA

Summary of Priorities

Restore	Enhance	Re-Imagine
<i>High Priority Items</i>	<i>High Priority Items</i>	<i>High Priority Items</i>
4 Lighting in Parks	6 Outdoor Fitness	10 Wayfinding / Signage
12 Practice Fields	7 Shade Structures	<i>Moderate Priority Items</i>
	<i>Moderate Priority Items</i>	17 Public Art
	19 Technology in Parks	
Estimated Budget Range: \$200,000	Estimated Budget Range: \$130,000	Estimated Budget Range: \$70,000

Cottonwood Park

Classification: Neighborhood Park
 Acres: 3.2
 Address: 212 McMakin St
 Last Update: 2021 (complete renovation)

Purpose of the Park:
 This park provides neighborhood recreation



CIP Summary

Master Plan	DD / CD	Restore	Enhance	Re-Imagine	Review
Yes	Yes		✓		NA

Summary of Priorities

Restore	Enhance	Re-Imagine
	<p>Moderate Priority Items</p> <p>19 Technology in Parks</p>	
Estimated Budget Range:	Estimated Budget Range: \$50,000	Estimated Budget Range:

Dr. Charles McKissick Park

Classification: Neighborhood Park

Acres: 7

Address: 2702 Taylor-Burk Dr

Last Update: 2020 (new playground, shade & pavilion)

Purpose of the Park:

This park provides neighborhood recreation and joint use activities with Vega Elementary School (MISD).



CIP Summary

Master Plan	DD / CD	Restore	Enhance	Re-Imagine	Review
No	No	✓	✓	✓	NA

Summary of Priorities

Restore	Enhance	Re-Imagine
<i>High Priority Items</i>	<i>High Priority Items</i>	<i>High Priority Items</i>
4 Lighting in Parks	6 Outdoor Fitness	10 Wayfinding / Signage
	7 Shade Structures	<i>Moderate Priority Items</i>
	<i>Moderate Priority Items</i>	17 Public Art
	19 Technology in Parks	
Estimated Budget Range: \$100,000	Estimated Budget Range: \$130,000	Estimated Budget Range: \$70,000

Dr. Mack Hill Park

Classification: Neighborhood Park

Acres: 16.9

Address: 1849 Reagan Dr

Last Update: 2016 (constructed)

Purpose of the Park:

This park provides neighborhood recreation and joint use activities with Sontag Elementary School (FISD).



CIP Summary

Master Plan	DD / CD	Restore	Enhance	Re-Imagine	Review
No	No		✓	✓	NA

Summary of Priorities

Restore	Enhance	Re-Imagine
	<p><i>High Priority Items</i></p> <p>6 Outdoor Fitness</p> <p><i>Moderate Priority Items</i></p> <p>19 Technology in Parks</p>	<p><i>High Priority Items</i></p> <p>10 Wayfinding / Signage</p>
Estimated Budget Range:	Estimated Budget Range: \$80,000	Estimated Budget Range: \$30,000

E.A. Randles Park

Classification: Neighborhood Park

Acres: 30

Address: 5400 Cedar Elm Dr

Last Update: 2000 (constructed)

Purpose of the Park:

This park provides neighborhood recreation and joint use activities with Johnson Elementary School (MISD).



CIP Summary

Master Plan	DD / CD	Restore	Enhance	Re-Imagine	Review
Yes	No	✓	✓	✓	NA

Summary of Priorities

Restore	Enhance	Re-Imagine
<i>High Priority Items</i>	<i>High Priority Items</i>	<i>High Priority Items</i>
4 Lighting in Parks	5 Restroom / Concession	10 Wayfinding / Signage
12 Practice Fields	6 Outdoor Fitness	
	7 Shade Structures	
	9 Pavilions	
	<i>Moderate Priority Items</i>	
	19 Technology in Parks	
Estimated Budget Range: \$200,000	Estimated Budget Range: \$650,000	Estimated Budget Range: \$30,000

Falcon Creek Park

Classification: Neighborhood Park

Acres: 11.6

Address: 301 Peregrine Dr

Last Update: 1998 (constructed)

Purpose of the Park:

This park provides neighborhood recreation and joint use activities with Eddins Elementary School (MISD).



CIP Summary

Master Plan	DD / CD	Restore	Enhance	Re-Imagine	Review
Yes	Yes	✓	✓	✓	NA

Summary of Priorities

Restore	Enhance	Re-Imagine
<i>High Priority Items</i>	<i>High Priority Items</i>	<i>High Priority Items</i>
1 Trails	6 Outdoor Fitness	10 Wayfinding / Signage
4 Lighting in Parks	7 Shade Structures	<i>Moderate Priority Items</i>
<i>Moderate Priority Items</i>	<i>Moderate Priority Items</i>	17 Public Art
14 Playgrounds	19 Technology in Parks	
Estimated Budget Range: \$600,000	Estimated Budget Range: \$130,000	Estimated Budget Range: \$70,000

Fitzhugh Park

Classification: Neighborhood Park

Acres: 1.2

Address: 700 Fitzhugh St

Last Update: 2019 (new playground, basketball court and pavilion)

Purpose of the Park:

This park provides neighborhood recreation.



CIP Summary

Master Plan	DD / CD	Restore	Enhance	Re-Imagine	Review
No	No	✓	✓	✓	NA

Summary of Priorities

Restore	Enhance	Re-Imagine
<p><i>High Priority Items</i></p> <p>4 Lighting in Parks</p>	<p><i>Moderate Priority Items</i></p> <p>19 Technology in Parks</p>	<p><i>High Priority Items</i></p> <p>10 Wayfinding / Signage</p>
Estimated Budget Range: \$100,000	Estimated Budget Range: \$50,000	Estimated Budget Range: \$30,000

George Webb Park

Classification: Neighborhood Park

Acres: 11.38

Address: 10450 Mill Bend Dr

Last Update: 2019 (constructed)

Purpose of the Park:

This park provides neighborhood recreation and joint use activities with Scott Elementary School (FISD).



CIP Summary

Master Plan	DD / CD	Restore	Enhance	Re-Imagine	Review
No	No	✓	✓		NA

Summary of Priorities

Restore	Enhance	Re-Imagine
<p><i>High Priority Items</i></p> <p>4 Lighting in Parks</p>	<p><i>Moderate Priority Items</i></p> <p>19 Technology in Parks</p>	
Estimated Budget Range: \$100,000	Estimated Budget Range: \$50,000	Estimated Budget Range:

Hill Top Park

Classification: Neighborhood Park

Acres: 10.2

Address: 1850 Winding Brook Dr

Last Update: 2020 (new playground with shade and pavilion renovation)

Purpose of the Park:

This park provides neighborhood recreation and joint use activities with Walker Elementary School (MISD).



CIP Summary

Master Plan	DD / CD	Restore	Enhance	Re-Imagine	Review
No	No	✓	✓	✓	NA

Summary of Priorities

Restore	Enhance	Re-Imagine
<i>High Priority Items</i>	<i>High Priority Items</i>	<i>High Priority Items</i>
1 Trails	6 Outdoor Fitness	10 Wayfinding / Signage
4 Lighting in Parks	7 Shade Structures	<i>Moderate Priority Items</i>
<i>Moderate Priority Items</i>	9 Pavilions	15 Learning Station
14 Playgrounds	<i>Moderate Priority Items</i>	
	19 Technology in Parks	
Estimated Budget Range: \$600,000	Estimated Budget Range: \$330,000	Estimated Budget Range: \$50,000

Horizon Park

Classification: Neighborhood Park

Acres: 6

Address: 401 Flatrock Dr

Last Update: 2010 (added amphitheater)

Purpose of the Park:

This park provides neighborhood recreation and joint use activities with Minshew Elementary School (MISD).



CIP Summary

Master Plan	DD / CD	Restore	Enhance	Re-Imagine	Review
No	No	✓	✓	✓	NA

Summary of Priorities

Restore	Enhance	Re-Imagine
<i>High Priority Items</i>	<i>High Priority Items</i>	<i>Moderate Priority Items</i>
4 Lighting in Parks	1 Trails	15 Learning Station
14 Playgrounds	6 Outdoor Fitness	
	7 Shade Structures	
	9 Pavilions	
	<i>Moderate Priority Items</i>	
	19 Technology in Parks	
Estimated Budget Range: \$450,000	Estimated Budget Range: \$600,000	Estimated Budget Range: \$15,000

Inspiration Park

Classification: Neighborhood Park

Acres: 10

Address: 4212 Shawnee Dr

Last Update: 2008 (constructed)

Purpose of the Park:

This park provides neighborhood recreation and joint use activities with Press Elementary School (MISD).



CIP Summary

Master Plan	DD / CD	Restore	Enhance	Re-Imagine	Review
No	No	✓	✓	✓	NA

Summary of Priorities

Restore	Enhance	Re-Imagine
<i>High Priority Items</i>	<i>High Priority Items</i>	<i>High Priority Items</i>
4 Lighting in Parks	9 Pavilions	10 Wayfinding / Signage
	<i>Moderate Priority Items</i>	<i>Moderate Priority Items</i>
	19 Technology in Parks	17 Public Art
<i>Estimated Budget Range: \$100,000</i>	<i>Estimated Budget Range: \$250,000</i>	<i>Estimated Budget Range: \$70,000</i>

Jim Ledbetter Park

Classification: Neighborhood Park

Acres: 10

Address: 3212 Bluewood Dr

Last Update: 2009 (constructed)

Purpose of the Park:

This park provides neighborhood recreation and joint use activities with Baker Elementary School (PISD).



CIP Summary

Master Plan	DD / CD	Restore	Enhance	Re-Imagine	Review
No	No	✓	✓	✓	NA

Summary of Priorities

Restore	Enhance	Re-Imagine
<i>High Priority Items</i>	<i>High Priority Items</i>	<i>High Priority Items</i>
4 Lighting in Parks	1 Trails	10 Wayfinding / Signage
	6 Outdoor Fitness	<i>Moderate Priority Items</i>
	<i>Moderate Priority Items</i>	15 Learning Stations
	16 Dog Parks	17 Public Art
	19 Technology in Parks	
Estimated Budget Range: \$100,000	Estimated Budget Range: \$650,000	Estimated Budget Range: \$85,000

John M. Whisenant Park

Classification: Neighborhood Park

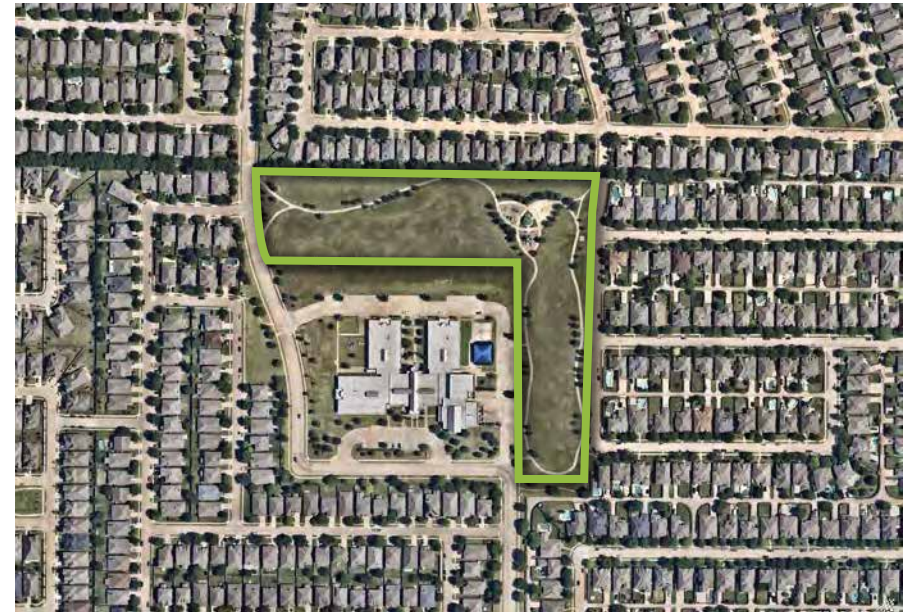
Acres: 9.9

Address: 3701 Hudson Crossing

Last Update: 2009 (constructed)

Purpose of the Park:

This park provides neighborhood recreation and joint use activities with Elliott Elementary School (FISD).



CIP Summary

Master Plan	DD / CD	Restore	Enhance	Re-Imagine	Review
No	No	✓	✓	✓	NA

Summary of Priorities

Restore	Enhance	Re-Imagine
<i>High Priority Items</i>	<i>High Priority Items</i>	<i>High Priority Items</i>
4 Lighting in Parks	7 Shade Structures	10 Wayfinding / Signage
	9 Pavilions	<i>Moderate Priority Items</i>
	<i>Moderate Priority Items</i>	17 Public Art
	19 Technology in Parks	
Estimated Budget Range: \$100,000	Estimated Budget Range: \$300,000	Estimated Budget Range: \$70,000

Mary Will Craig Park

Classification: Neighborhood Park

Acres: 10

Address: 2701 Bois D'Arc Rd

Last Update: 2022 (complete renovation)

Purpose of the Park:

This park provides neighborhood recreation and joint use activities with Slaughter Elementary School (MISD).



CIP Summary

Master Plan	DD / CD	Restore	Enhance	Re-Imagine	Review
Yes	Yes	✓	✓	✓	NA

Summary of Priorities

Restore	Enhance	Re-Imagine
		<i>Moderate Priority Items</i> 15 Learning Station 17 Public Art
Estimated Budget Range:	Estimated Budget Range:	Estimated Budget Range: \$60,000

Murphy Park

Classification: Neighborhood Park
 Acres: 1
 Address: 1601 W Josephine St
 Last Update: 2022 (complete renovation)

Purpose of the Park:
 This park provides neighborhood recreation.



CIP Summary

Master Plan	DD / CD	Restore	Enhance	Re-Imagine	Review
Yes	Yes	✓	✓		NA

Summary of Priorities

Restore	Enhance	Re-Imagine
	<p>Moderate Priority Items</p> <p>19 Technology in Parks</p>	
Estimated Budget Range:	Estimated Budget Range: \$500,000	Estimated Budget Range:

Prestwyck Park

Classification: Neighborhood Park

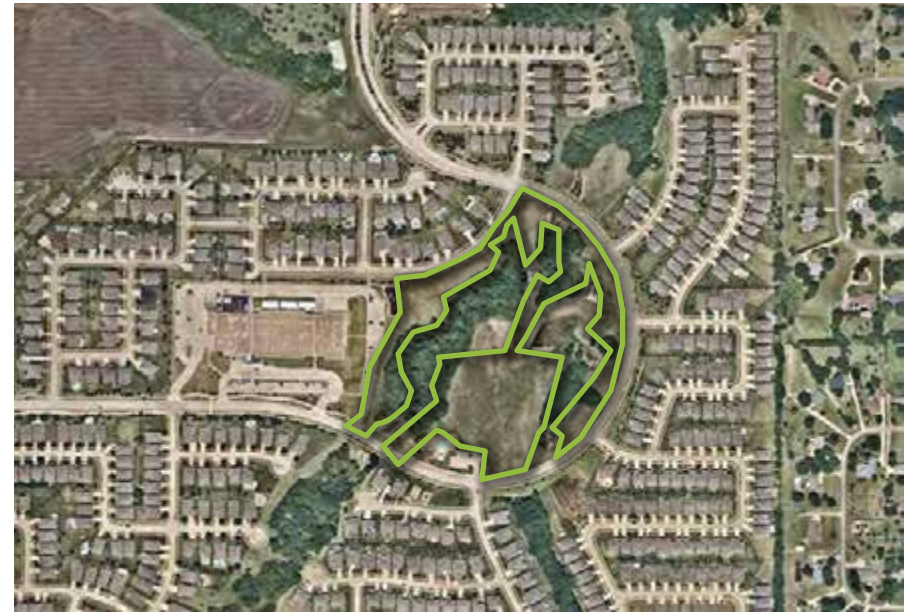
Acres: 10

Address: Prestwick Hollow Dr

Last Update: 2021 (constructed)

Purpose of the Park:

This park provides neighborhood recreation and joint use activities with Hughes Elementary School (PISD).



CIP Summary

Master Plan	DD / CD	Restore	Enhance	Re-Imagine	Review
Yes	Yes	✓	✓	✓	NA

Summary of Priorities

Restore	Enhance	Re-Imagine
		<p><i>High Priority Items</i></p> <p>10 Wayfinding / Signage</p> <p><i>Moderate Priority Items</i></p> <p>17 Public Art</p>
		Estimated Budget Range: \$85,000

Robinson Ridge

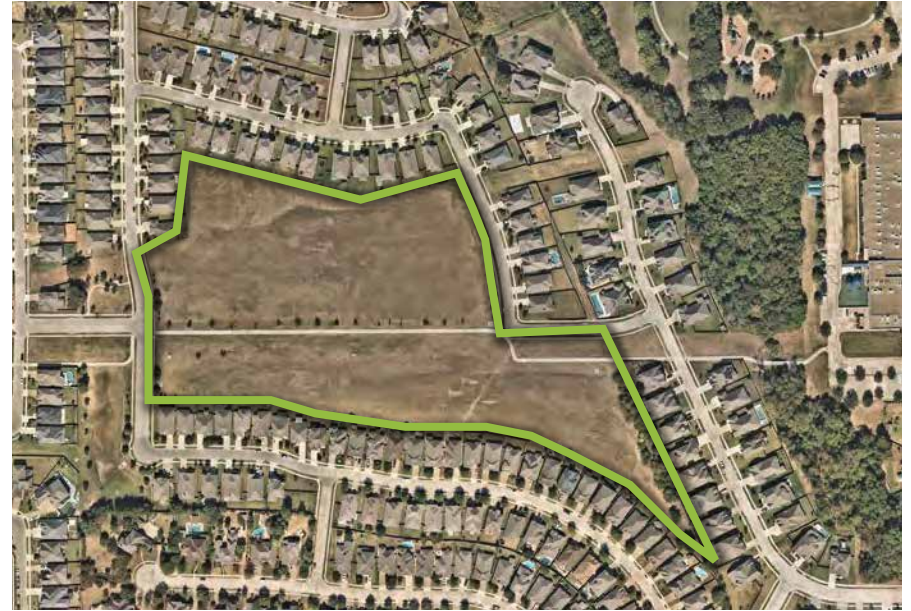
Classification: Neighborhood Park

Acres: 15

Address: 3900 Muscadine Dr

Purpose of the Park:

This park provides neighborhood recreation and passive activities.



CIP Summary

Master Plan	DD / CD	Restore	Enhance	Re-Imagine	Review
No	No	✓	✓	✓	NA

Summary of Priorities

Restore	Enhance	Re-Imagine
<i>High Priority Items</i>	<i>High Priority Items</i>	<i>High Priority Items</i>
4 Lighting in Parks	1 Trails	10 Wayfinding / Signage
14 Playgrounds	6 Outdoor Fitness	
	7 Shade Structures	
	9 Pavilions	
	<i>Moderate Priority Items</i>	
	19 Technology in Parks	
Estimated Budget Range: \$450,000	Estimated Budget Range: \$600,000	Estimated Budget Range: \$15,000

Rowlett Creek Park

Classification: Neighborhood Park

Acres: 20.7

Address: 4200 Big Fork Trail

Last Update: 2009 (constructed)

Purpose of the Park:

This park provides neighborhood recreation and joint use activities with Ogle Elementary School (FISD).



CIP Summary

Master Plan	DD / CD	Restore	Enhance	Re-Imagine	Review
No	No	✓	✓	✓	NA

Summary of Priorities

Restore	Enhance	Re-Imagine
<i>High Priority Items</i>	<i>High Priority Items</i>	<i>High Priority Items</i>
4 Lighting in Parks	6 Outdoor Fitness	10 Wayfinding / Signage
	7 Shade Structures	<i>Moderate Priority Items</i>
	9 Pavilions	15 Learning Station
	<i>Moderate Priority Items</i>	17 Public Art
	19 Technology in Parks	
Estimated Budget Range: \$100,000	Estimated Budget Range: \$350,000	Estimated Budget Range: \$75,000

Serenity Park

Classification: Neighborhood Park

Acres: 16.8

Address: 6701 Bershire Rd

Last Update: 2004 (constructed)

Purpose of the Park:

This park provides neighborhood recreation and joint use activities with Wolford Elementary School (MISD).



CIP Summary

Master Plan	DD / CD	Restore	Enhance	Re-Imagine	Review
No	No	✓	✓	✓	NA

Summary of Priorities

Restore	Enhance	Re-Imagine
<i>High Priority Items</i>	<i>High Priority Items</i>	<i>High Priority Items</i>
4 Lighting in Parks	6 Outdoor Fitness	10 Wayfinding / Signage
<i>Moderate Priority Items</i>	9 Pavilions	<i>Moderate Priority Items</i>
14 Playgrounds	<i>Moderate Priority Items</i>	15 Learning Station
18 Fishing Piers	19 Technology in Parks	17 Public Art
Estimated Budget Range: \$650,000	Estimated Budget Range: \$300,000	Estimated Budget Range: \$75,000

Tom Allen, Jr. Park

Classification: Neighborhood Park

Acres: 6

Address: 3301 Bahnman

Last Update: 2013 (added lighting)

Purpose of the Park:

This park provides neighborhood recreation.



CIP Summary

Master Plan	DD / CD	Restore	Enhance	Re-Imagine	Review
No	No	✓	✓	✓	NA

Summary of Priorities

Restore	Enhance	Re-Imagine
<i>High Priority Items</i>	<i>High Priority Items</i>	<i>High Priority Items</i>
4 Lighting in Parks	6 Outdoor Fitness	10 Wayfinding / Signage
	<i>Moderate Priority Items</i>	<i>Moderate Priority Items</i>
	19 Technology in Parks	17 Public Art
<i>Estimated Budget Range: \$100,000</i>	<i>Estimated Budget Range: \$80,000</i>	<i>Estimated Budget Range: \$75,000</i>

Valley Creek Park

Classification: Neighborhood Park

Acres: 5

Address: 2750 Valley Creek Trail

Last Update: 2021 (new site furnishings); 2020 (pavilion renovation); 2015 (new playground)

Purpose of the Park:

This park provides neighborhood recreation and joint use activities with Valley Creek Elementary School (MISD).



CIP Summary

Master Plan	DD / CD	Restore	Enhance	Re-Imagine	Review
No	No	✓	✓	✓	NA

Summary of Priorities

Restore	Enhance	Re-Imagine
<i>High Priority Items</i>	<i>High Priority Items</i>	<i>High Priority Items</i>
4 Lighting in Parks	1 Trails	10 Wayfinding / Signage
	9 Pavilions	
	<i>Moderate Priority Items</i>	
	19 Technology in Parks	
Estimated Budget Range: \$100,000	Estimated Budget Range: \$400,000	Estimated Budget Range: \$30,000

W.B. Finney Park

Classification: Neighborhood Park

Acres: 13.3

Address: 6350 Glen Oaks Dr

Last Update: 1994 (constructed)

Purpose of the Park:

This park provides neighborhood recreation and joint use activities with Glen Oaks Elementary School (MISD).



CIP Summary

Master Plan	DD / CD	Restore	Enhance	Re-Imagine	Review
Yes	No	✓	✓	✓	NA

Summary of Priorities

Restore	Enhance	Re-Imagine
<i>High Priority Items</i>	<i>High Priority Items</i>	<i>High Priority Items</i>
4 Lighting in Parks	1 Trails	10 Wayfinding / Signage
9 Pavilions	7 Shade Structures	
	<i>Moderate Priority Items</i>	
	19 Technology in Parks	
Estimated Budget Range: \$300,000	Estimated Budget Range: \$300,000	Estimated Budget Range: \$30,000

Wattley Park

Classification: Neighborhood Park

Acres: 9

Address: 912 Charleston St

Last Update: 2023 (complete renovation)

Purpose of the Park:

This park provides neighborhood recreation.



CIP Summary

Master Plan	DD / CD	Restore	Enhance	Re-Imagine	Review
Yes	No	✓	✓	✓	NA

Summary of Priorities

Restore	Enhance	Re-Imagine
<i>High Priority Items</i>	<i>High Priority Items</i>	<i>High Priority Items</i>
4 Lighting in Parks	1 Trails	10 Wayfinding / Signage
12 Practice Fields	7 Shade Structures	<i>Moderate Priority Items</i>
<i>Moderate Priority Items</i>	9 Pavilions	17 Public Art
14 Playgrounds	<i>Moderate Priority Items</i>	
	19 Technology in Parks	
Estimated Budget Range: \$550,000	Estimated Budget Range: \$500,000	Estimated Budget Range: \$70,000

Winniford Park

Classification: Neighborhood Park

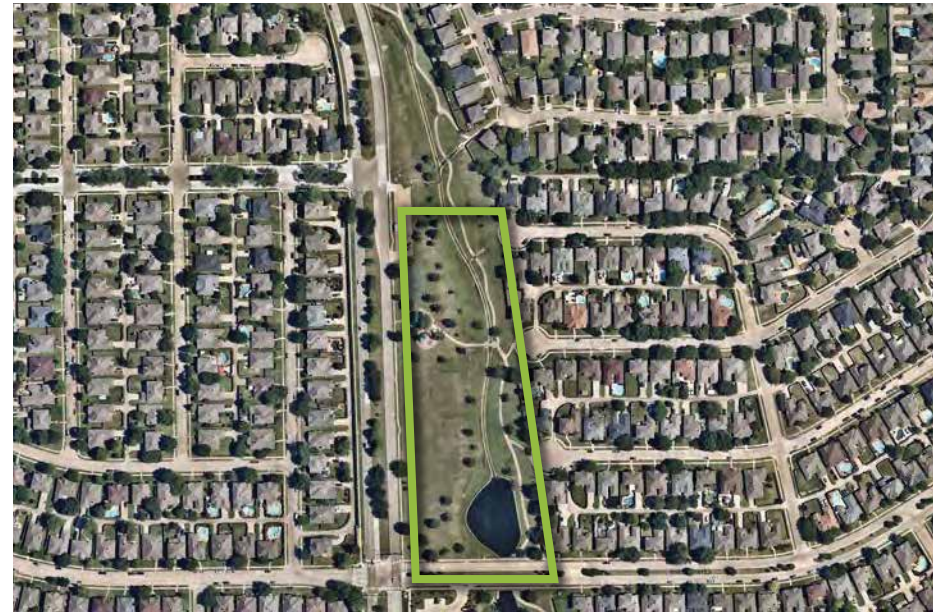
Acres: 6.98

Address: 4900 Highlands Dr

Last Update: 2018 (new playground)

Purpose of the Park:

This park provides neighborhood recreation.



CIP Summary

Master Plan	DD / CD	Restore	Enhance	Re-Imagine	Review
Yes	No	✓	✓	✓	NA

Summary of Priorities

Restore	Enhance	Re-Imagine
<i>High Priority Items</i>	<i>High Priority Items</i>	<i>High Priority Items</i>
4 Lighting in Parks	6 Outdoor Fitness	10 Wayfinding / Signage
12 Practice Fields	9 Pavilions	<i>Moderate Priority Items</i>
	<i>Moderate Priority Items</i>	15 Learning Station
	19 Technology in Parks	17 Public Art
Estimated Budget Range: \$200,000	Estimated Budget Range: \$280,000	Estimated Budget Range: \$75,000

Al Ruschhaupt Soccer Complex

Classification: Community Park

Acres: 96

Address: 1986 Park View Ave

Last Update: 2021 (new restrooms, pavilion, patio, sports lighting, parking lot lighting)

Purpose of the Park:

This park serves to provide community wide recreation, sports and athletic opportunities.



CIP Summary

Master Plan	DD / CD	Restore	Enhance	Re-Imagine	Review
Yes	Yes	✓	✓	✓	NA

Summary of Priorities

Restore	Enhance	Re-Imagine
<i>High Priority Items</i>	<i>High Priority Items</i>	<i>High Priority Items</i>
4 Lighting in Parks	1 Trails	10 Wayfinding / Signage
	5 Restroom / Concession	<i>Moderate Priority Items</i>
	7 Shade Structures	17 Public Art
	9 Soccer Fields	
	<i>Moderate Priority Items</i>	
	19 Technology in Parks	
Estimated Budget Range: \$100,000	Estimated Budget Range: \$2,000,000	Estimated Budget Range: \$70,000

Alex Clark Memorial Disc Golf Course

Classification: Community Park

Acres: 18

Address: 1986 Park View Ave

Last Update: 2020 (new baskets)

Purpose of the Park:

This park serves to provide the community an 18 basket disc golf course.



CIP Summary

Master Plan	DD / CD	Restore	Enhance	Re-Imagine	Review
No	No		✓	✓	NA

Summary of Priorities

Restore	Enhance	Re-Imagine
	High Priority Items 7 Shade Structures	High Priority Items 10 Wayfinding / Signage
	Moderate Priority Items 19 Technology in Parks	Moderate Priority Items 17 Public Art
Estimated Budget Range:	Estimated Budget Range: \$100,000	Estimated Budget Range: \$70,000

Bonnie Wenk Park

Classification: Community Park

Acres: 216

Address: 2996 Virginia Pkwy

Last Update: 2013 (phase 1)

2019 (phase 2)

Purpose of the Park:

This park serves to provide community wide recreation, sports and athletic opportunities.



CIP Summary

Master Plan	DD / CD	Restore	Enhance	Re-Imagine	Review
Yes	No	✓	✓	✓	NA

Summary of Priorities

Restore	Enhance	Re-Imagine
<i>High Priority Items</i>	<i>High Priority Items</i>	<i>High Priority Items</i>
4 Lighting in Parks	1 Trails	8 Special Events
	7 Shade Structures	10 Wayfinding / Signage
	<i>Moderate Priority Items</i>	<i>Moderate Priority Items</i>
	16 Dog Park	17 Public Art
	18 Fishing Piers	
	19 Technology in Parks	
Estimated Budget Range: \$100,000	Estimated Budget Range: \$1,000,000	Estimated Budget Range: \$100,000

Erwin Park

Classification: Community Park

Acres: 212

Address: 4300 CR 1006

Last Update: 2021 (new site furnishings, restrooms, pavilion, camp sites, picnic shelters)

Purpose of the Park:

This community park serves to provide recreation, camping, nature activities, trails and dirt bike paths.



CIP Summary

Master Plan	DD / CD	Restore	Enhance	Re-Imagine	Review
Yes	No	✓	✓	✓	NA

Summary of Priorities

Restore	Enhance	Re-Imagine
<i>High Priority Items</i>	<i>High Priority Items</i>	<i>High Priority Items</i>
4 Lighting in Parks	9 Pavilions	8 Special Events
5 Restroom / Concession	11 Nature Preserve	10 Wayfinding / Signage
	<i>Moderate Priority Items</i>	<i>Moderate Priority Items</i>
	18 Fishing Piers	15 Learning Station
	19 Technology in Parks	17 Public Art
Estimated Budget Range: \$1,000,000	Estimated Budget Range: \$4,00,000	Estimated Budget Range: \$500,000

Finch Park

Classification: Community Park

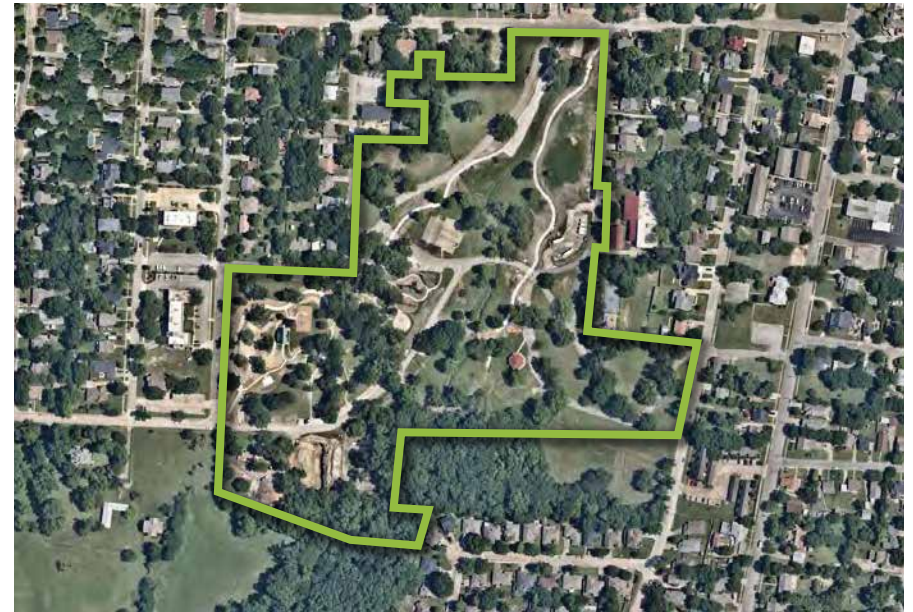
Acres: 32.4

Address: 301 W Standifer St

Last Update: 2021 (trails, tennis & pickleball)
2022 (splashpad, pavilion & playground)

Purpose of the Park:

This park serves to provide community wide recreation, sports and athletic opportunities.



CIP Summary

Master Plan	DD / CD	Restore	Enhance	Re-Imagine	Review
Yes	Yes	✓	✓	✓	NA

Summary of Priorities

Restore	Enhance	Re-Imagine
<p><i>High Priority Items</i></p> <p>4 Lighting in Parks</p>	<p><i>High Priority Items</i></p> <p>6 Outdoor Fitness</p> <p><i>Moderate Priority Items</i></p> <p>19 Technology in Parks</p>	<p><i>High Priority Items</i></p> <p>8 Special Events</p> <p>10 Wayfinding / Signage</p>
Estimated Budget Range: \$200,000	Estimated Budget Range: \$100,000	Estimated Budget Range: \$200,000

Gabe Nesbitt Community Park

Classification: Community Park

Acres: 160

Address: 7001 W Eldorado Pkwy

Last Update: 2021 (baseball/ softball, playground upgrade); 2022 (indoor tennis)

Purpose of the Park:

This park serves to provide community wide recreation, sports and athletic opportunities.



CIP Summary

Master Plan	DD / CD	Restore	Enhance	Re-Imagine	Review
Yes	Yes	✓	✓	✓	NA

Summary of Priorities

Restore	Enhance	Re-Imagine
<p><i>High Priority Items</i></p> <ul style="list-style-type: none"> 4 Lighting in Parks 5 Restroom / Concession 7 Shade Structures 12 Practice Fields 	<p><i>High Priority Items</i></p> <ul style="list-style-type: none"> 1 Trails 3 Multi-Use Fields 6 Outdoor Fitness 9 Pavilions 1 Expand Recreation Center <p><i>Moderate Priority Items</i></p> <ul style="list-style-type: none"> 14 Playgrounds 19 Technology in Parks 	<p><i>High Priority Items</i></p> <ul style="list-style-type: none"> 8 Special Events 10 Wayfinding / Signage <p><i>Moderate Priority Items</i></p> <ul style="list-style-type: none"> 17 Public Art
Estimated Budget Range: \$750,000	Estimated Budget Range: \$15,000,000	Estimated Budget Range: \$250,000

Old Settler's Park

Classification: Community Park

Acres: 29

Address: 1201 East Louisiana St

Last Update: 2021 (facility renovation; playground, pavilion, sport court renovation)

Purpose of the Park:

This park serves to provide community wide recreation, sports and athletic opportunities.



CIP Summary

Master Plan	DD / CD	Restore	Enhance	Re-Imagine	Review
Yes	Yes	✓	✓	✓	NA

Summary of Priorities

Restore	Enhance	Re-Imagine
<p><i>High Priority Items</i></p> <p>4 Lighting in Parks</p>	<p><i>High Priority Items</i></p> <p>1 Trails</p> <p>7 Shade Structures</p> <p>9 Pavilions</p> <p>1 Expand Recreation Center</p> <p><i>Moderate Priority Items</i></p> <p>14 Playgrounds</p> <p>19 Technology in Parks</p>	<p><i>High Priority Items</i></p> <p>8 Special Events</p> <p>10 Wayfinding / Signage</p> <p><i>Moderate Priority Items</i></p> <p>17 Public Art</p>
Estimated Budget Range: \$100,000	Estimated Budget Range: \$12,000,000	Estimated Budget Range: \$250,000

Towne Lake Park

Classification: Community Park

Acres: 229.7

Address: 1405 Wilson Creek Pkwy

Last Update: 2018 (playground renovation)
2021 (master plan)

Purpose of the Park:

This park serves to provide community wide recreation, sports and athletic opportunities.



CIP Summary

Master Plan	DD / CD	Restore	Enhance	Re-Imagine	Review
Yes	No	✓	✓	✓	NA

Summary of Priorities

Restore	Enhance	Re-Imagine
<p>High Priority Items</p> <ul style="list-style-type: none"> 4 Lighting in Parks 5 Restroom / Concession <p>Moderate Priority Items</p> <ul style="list-style-type: none"> 18 Fishing Piers 21 Softball Fields 	<p>High Priority Items</p> <ul style="list-style-type: none"> 1 Trails 6 Outdoor Fitness 9 Pavilions <p>Moderate Priority Items</p> <ul style="list-style-type: none"> 14 Playgrounds 19 Technology in Parks 	<p>High Priority Items</p> <ul style="list-style-type: none"> 8 Special Events 10 Wayfinding / Signage <p>Moderate Priority Items</p> <ul style="list-style-type: none"> 15 Learning Stations 17 Public Art
Estimated Budget Range: \$2,000,000	Estimated Budget Range: \$2,000,000	Estimated Budget Range: \$200,000

Central Park

Classification: Special Use Park

Acres: 0.5

Address: 105 Hunt St

Last Update: 1997 (constructed)

Purpose of the Park:

This special use park serves as a space for small gatherings in the downtown area.



CIP Summary

Master Plan	DD / CD	Restore	Enhance	Re-Imagine	Review
No	No	✓	✓	✓	NA

Summary of Priorities

Restore	Enhance	Re-Imagine
<p><i>High Priority Items</i></p> <ul style="list-style-type: none"> 4 Lighting in Parks 9 Pavilions 	<p><i>High Priority Items</i></p> <ul style="list-style-type: none"> 2 Downtown Park <p><i>Moderate Priority Items</i></p> <ul style="list-style-type: none"> 19 Technology in Parks 	<p><i>High Priority Items</i></p> <ul style="list-style-type: none"> 8 Special Events 10 Wayfinding / Signage <p><i>Moderate Priority Items</i></p> <ul style="list-style-type: none"> 17 Public Art
Estimated Budget Range: \$300,000	Estimated Budget Range: \$2,000,000	Estimated Budget Range: \$150,000

Crape Myrtle World Collection

Classification: Special Use Park

Acres: 7.2

Address: 6452 Collin McKinney Pkwy

Last Update: 2010 (constructed)

Purpose of the Park:

This passive park serves as to feature multiple varieties of crape myrtles.



CIP Summary

Master Plan	DD / CD	Restore	Enhance	Re-Imagine	Review
No	No	✓	✓	✓	NA

Summary of Priorities

Restore	Enhance	Re-Imagine
<p><i>High Priority Items</i></p> <p>4 Lighting in Parks</p>	<p><i>Moderate Priority Items</i></p> <p>19 Technology in Parks</p>	<p><i>High Priority Items</i></p> <p>8 Special Events</p> <p>10 Wayfinding / Signage</p>
Estimated Budget Range: \$100,000	Estimated Budget Range: \$50,000	Estimated Budget Range: \$100,000

Day Labor Plaza

Classification: Special Use Park

Acres: 0.5

Address: 120 Wilcox St

Last Update: 2005 (constructed)

Purpose of the Park:

This park serves as a drop off / pick up location for day labor workers.



CIP Summary

Master Plan	DD / CD	Restore	Enhance	Re-Imagine	Review
No	No				NA

Summary of Priorities

Restore	Enhance	Re-Imagine
Estimated Budget Range:	Estimated Budget Range:	Estimated Budget Range:

Dr. Glenn Mitchell Memorial Park

Classification: Special Use Park

Acres: 1

Address: 300 Louisiana St

Last Update: 2004 (constructed)

Purpose of the Park:

This special use park serves as a passive space for the historic downtown area.



CIP Summary

Master Plan	DD / CD	Restore	Enhance	Re-Imagine	Review
No	No	✓	✓	✓	NA

Summary of Priorities

Restore	Enhance	Re-Imagine
<i>High Priority Items</i>	<i>High Priority Items</i>	<i>High Priority Items</i>
4 Lighting in Parks	2 Downtown Park	8 Special Events
	<i>Moderate Priority Items</i>	10 Wayfinding / Signage
	10 Technology in Parks	

Dwayne Howell Meditation Garden

Classification: Special Use Park
 Acres: 1
 Address: 2001 S Central Expwy
 Last Update: 2007 (constructed)

Purpose of the Park:

This special use park serves a natural respite for meditation and relaxation.



CIP Summary

Master Plan	DD / CD	Restore	Enhance	Re-Imagine	Review
No	No			✓	NA

Summary of Priorities

Restore	Enhance	Re-Imagine
		<p><i>High Priority Items</i></p> <p>10 Wayfinding / Signage</p> <p><i>Moderate Priority Items</i></p> <p>17 Public Art</p>
<p>Estimated Budget Range:</p>		<p>Estimated Budget Range: \$70,000</p>

HIGH PRIORITIES BY PARK

- AH A. Hardy Eubanks, Jr.**
Outdoor Fitness
- HT Hill Top**
Trails, Lighting in Parks, Outdoor Fitness, Shade Structures, Pavilions, Wayfinding / Signage
- AR Al Ruschhaupt Soccer Complex**
Trails, Lighting in Parks, Restroom/Concession, Shade Structures, Wayfinding/Signage, Upgraded Soccer Fields
- HZ Horizon**
Trails, Lighting in Parks, Outdoor Fitness, Shade Structures, Pavilions
- AC Alex Clark Memorial Disc Golf**
Wayfinding/Signage, Shade Structures
- IN Inspiration**
Lighting in Parks, Pavilions, Wayfinding / Signage
- AW Ash Woods**
Lighting in Parks, Outdoor Fitness, Shade Structures, Pavilion, Wayfinding / Signage, Practice Fields
- JL Jim Ledbetter**
Trails, Lighting in Parks, Outdoor Fitness, Wayfinding / Signage
- AV Aviator**
- JMW John M. Whisenant**

Ezra Lee (Tinker) Memorial Park

Classification: Special Use Park

Acres: 1.5

Address: 4301 W Eldorado Pkwy

Last Update: 2001 (constructed)

Purpose of the Park:

This park serves as a passive space for the neighborhood.



CIP Summary

Master Plan	DD / CD	Restore	Enhance	Re-Imagine	Review
No	No	✓	✓	✓	NA

Summary of Priorities

Restore	Enhance	Re-Imagine
<p><i>High Priority Items</i></p> <p>4 Lighting in Parks</p>	<p><i>Moderate Priority Items</i></p> <p>19 Technology in Parks</p>	<p><i>High Priority Items</i></p> <p>10 Wayfinding / Signage</p> <p><i>Moderate Priority Items</i></p> <p>17 Public Art</p>
Estimated Budget Range: \$100,000	Estimated Budget Range: \$50,000	Estimated Budget Range: \$70,000

McKinney Soccer Complex at Craig Ranch

Classification: Community Park

Acres: 65

Address: 6375 Collin McKinney Pkwy

Last Update: 2019 (park road added)

2022 renovation of 6 fields

Purpose of the Park:

This park serves community wide for recreation, sports and athletics opportunities.



CIP Summary

Master Plan	DD / CD	Restore	Enhance	Re-Imagine	Review
Yes	Yes	✓	✓	✓	NA

Summary of Priorities

Restore	Enhance	Re-Imagine
<p><i>High Priority Items</i></p> <p>4 Lighting in Parks</p> <p>5 Restroom / Concession</p> <p>13 Soccer</p>	<p><i>High Priority Items</i></p> <p>1 Trails</p> <p><i>Moderate Priority Items</i></p> <p>14 Playgrounds</p> <p>18 Fishing Piers</p> <p>19 Technology in Parks</p>	<p><i>High Priority Items</i></p> <p>10 Wayfinding / Signage</p> <p><i>Moderate Priority Items</i></p> <p>17 Public Art</p>
Estimated Budget Range: \$2,000,000	Estimated Budget Range: \$1,000,000	Estimated Budget Range: \$70,000

North Park

Classification: Community Park

Acres: 15

Address: 1701 N McDonald St

Last Update: 2022 (restroom renovation and landscape improvements)

Purpose of the Park:

This park serves community wide for recreation, sports and athletics opportunities.



CIP Summary

Master Plan	DD / CD	Restore	Enhance	Re-Imagine	Review
Yes	No	✓	✓	✓	NA

Summary of Priorities

Restore	Enhance	Re-Imagine
<p><i>High Priority Items</i></p> <ul style="list-style-type: none"> 3 Multi-Use Fields 4 Lighting in Parks 5 Restroom / Concession 	<p><i>High Priority Items</i></p> <ul style="list-style-type: none"> 1 Trails 7 Shade Structures 9 Pavilions <p><i>Moderate Priority Items</i></p> <ul style="list-style-type: none"> 14 Playgrounds 19 Technology in Parks 21 Softball 22 Baseball 	<p><i>High Priority Items</i></p> <ul style="list-style-type: none"> 8 Special Events 10 Wayfinding / Signage <p><i>Moderate Priority Items</i></p> <ul style="list-style-type: none"> 17 Public Art 20 Waterpark
Estimated Budget Range: \$1,500,000	Estimated Budget Range: \$2,000,000	Estimated Budget Range: \$4,000,000

Oak Hollow Golf Course

Classification: Golf Course

Acres: 147

Address: 3005 N McDonald St

Last Update: 2010 (clubhouse renovation)

Purpose of the Park:

This park serves to as the city's 18-hole municipal golf course.



CIP Summary

Master Plan	DD / CD	Restore	Enhance	Re-Imagine	Review
Yes	No	✓		✓	NA

Summary of Priorities

Restore	Enhance	Re-Imagine
<p><i>High Priority Items</i></p> <p>5 Restroom / Concession</p>		<p><i>High Priority Items</i></p> <p>10 Wayfinding / Signage</p>
Estimated Budget Range: \$500,000	Estimated Budget Range:	Estimated Budget Range: \$200,000

Veterans Memorial Park

Classification: Special Use Park

Acres: 1.5

Address: 6053 Weiskopf

Last Update: 2011 (constructed)
2018 (Gold Star Memorial added)

Purpose of the Park:

This passive park serves to honor those from Collin County who have fallen.



CIP Summary

Zone	Master Plan	DD / CD	Restore	Enhance	Re-Imagine	Review
X	No	No	✓	✓	✓	NA

Summary of Priorities

Restore	Enhance	Re-Imagine
<p><i>High Priority Items</i></p> <p>4 Lighting in Parks</p>	<p><i>Moderate Priority Items</i></p> <p>19 Technology in Parks</p>	<p><i>Moderate Priority Items</i></p> <p>17 Public Art</p>
<p>Estimated Budget Range: \$100,000</p>	<p>Estimated Budget Range: \$50,000</p>	<p>Estimated Budget Range: \$40,000</p>

Recreation Center at Towne Lake

Classification: Recreation Facility

Acres: 60

Address: 2001 S Central Expwy

Last Update: 2021 (monument LED sign)

2022 (Planned Interior Renovation)

Purpose of the Park:

This park provides community wide recreation, classes, fitness and camps.



CIP Summary

Master Plan	DD / CD	Restore	Enhance	Re-Imagine	Review
No	No	✓	✓	✓	NA

Summary of Priorities

Restore	Enhance	Re-Imagine
<i>High Priority Items</i>	<i>Moderate Priority Items</i>	<i>High Priority Items</i>
4 Lighting in Parks	19 Technology in Parks	10 Wayfinding / Signage
		<i>Moderate Priority Items</i>
		17 Public Art
Estimated Budget Range: \$100,000	Estimated Budget Range: \$50,000	Estimated Budget Range: \$70,000

Senior Recreation Center

Classification: Recreation Facility

Acres: 28

Address: 1400 College St

Last Update: 2021 (complete renovation)

Purpose of the Center:

This recreation center provides community wide recreation, fitness classes for those 55 and up.



CIP Summary

Master Plan	DD / CD	Restore	Enhance	Re-Imagine	Review
No	No		✓	✓	NA

Summary of Priorities

Restore	Enhance	Re-Imagine
	<p><i>High Priority Items</i></p> <p>2 Adult / Senior Center</p> <p>6 Outdoor Fitness</p> <p><i>Moderate Priority Items</i></p> <p>19 Technology in Parks</p>	<p><i>High Priority Items</i></p> <p>10 Wayfinding / Signage</p> <p><i>Moderate Priority Items</i></p> <p>15 Learning Stations</p> <p>17 Public Art</p>
	Estimated Budget Range: \$10,000,000	Estimated Budget Range: \$100,000

Juanita Maxfield Aquatic Center

Classification: Recreation Facility

Acres: 6

Address: 1701 N McDonald St

Last Update: 2000

Purpose of the Aquatic Center:

This aquatic center provides aquatic recreation and swim lessons for the neighborhood.



CIP Summary

Master Plan	DD / CD	Restore	Enhance	Re-Imagine	Review
Yes	No		✓	✓	NA

Summary of Priorities

Restore	Enhance	Re-Imagine
	<p><i>High Priority Items</i></p> <ul style="list-style-type: none"> 7 Shade Structures 9 Pavilions 	<p><i>High Priority Items</i></p> <ul style="list-style-type: none"> 10 Wayfinding / Signage
	Estimated Budget Range: \$600,000	Estimated Budget Range: \$50,000

Gray Branch

Classification: Open Space

Acres: 219.25

Address: 1289 Gray Branch Rd

Purpose of the Park

This park provides active and passive recreational uses.



CIP Summary

Master Plan	DD / CD	Restore	Enhance	Re-Imagine	Review
Yes	No		✓	✓	NA

Summary of Priorities

Restore	Enhance	Re-Imagine
	High Priority Items 1 Trails 4 Lighting in Parks 7 Shade Structures 9 Pavilions	High Priority Items 3 Multi-Use Fields 5 Restroom / Concession 10 Wayfinding / Signage 13 Soccer Fields
	Estimated Budget Range: \$600,000	Estimated Budget Range: \$50,000

HIGH PRIORITY ITEMS

		BUDGET RANGES	A. Hardy Eubanks, Jr.	Al Ruschhaupt Soccer Complex	Alex Clark Memorial Disc Golf	Ash Woods	Aviator	Bonnie Wenk	Brinkman Tract	Carey Cox Memorial	Central Park	Coltonwood	Crape Myrtle World Collection	Day Labor Plaza	Dowell Property	Dwayne Howell Meditation Garden	Dr. Charles McKissick	Dr. Glenn Mitchell Memorial	Dr. Mack Hill	E. A. Randles	Erwin Park	Ezra Lee (Tinker) Memorial	Falcon Creek	Finch Park	Fitzhugh	Gabe Nesbitt Community Park	George Webb	Gray Branch	FUNDING SOURCES*
Outdoor																													
1	Trails	\$750,000 - \$1,500,00 per mile	◆				◆								◆						◆		◆			◆		◆	
2	Downtown Park	Varies									◆							◆											
3	Multi-Use Fields	\$400,000 - \$500,000 each \$750,000 - \$1,000,000 (artificial turf)																								◆		◆	
4	Lighting in Parks	\$5,000 - \$7,500 per pole pedestrian \$60,000 - \$80,000 per sports pole	◆		◆	◆	◆		◆	◆		◆					◆	◆		◆	◆	◆	◆	◆	◆	◆	◆	◆	
5	Restroom / Concession	\$500,000 - \$600,000 range	◆																	◆	◆					◆		◆	
6	Outdoor Fitness	\$5,000 - \$7,500 each \$40,000 - \$50,000 range (multiple)	◆			◆	◆			◆							◆		◆	◆			◆	◆		◆			
7	Shade Structures	\$75,000 - \$150,000 range	◆	◆	◆	◆	◆		◆								◆		◆			◆			◆		◆		
8	Special Events	Varies						◆			◆	◆						◆			◆				◆		◆		
9	Pavilions	\$300,000 - \$400,000 range				◆					U									◆	◆					◆		◆	
10	Wayfinding / Signage	\$800 - \$1,500 per sign	◆	U	◆		◆		◆	◆		U				◆	◆	◆	◆	◆	◆	◆	◆	◆	◆	◆	◆	◆	
11	Nature Preserve	Varies																			◆								
12	Practice Fields	\$250,000 range per field				◆	◆			◆																◆			
13	Soccer Fields	\$400,000 - \$500,000 each \$750,000 - \$1,000,000 (artificial turf)	U																									◆	
Indoor																													
1	Expand Recreation Center	Varies																								◆			
2	Adult / Senior Center	Varies																											

◆ - Recommended Location

U - Updates or Replacements

* = Refer to Pages 100 - 102

HIGH PRIORITY ITEMS

		BUDGET RANGES	Hill Top	Horizon	Inspiration	Jim Ledbetter	John M. Whisenant	Johnson Bolin Property	Juanita Maxfield Aquatic Center	Mary Will Craig	McK. Soccer Complex at Craig Ranch	Murphy	North Park	Oak Hollow Golf Course	Old Settler's Park	Prestwyck	Recreation Center at Towne Lake	Robinson Ridge	Rowlett Creek	Senior Recreation Center	Serenity	Tom Allen, Jr.	Towne Lake	Valley Creek	W. B. Finney	Wattley	Winniford	Veterans Memorial Park	Future Parks / New Land	FUNDING SOURCES*	
Outdoor																															
1	Trails	\$750,000 - \$1,500,00 per mile	◆	◆		◆				◆	◆	◆	◆	◆				◆					◆	◆	◆	◆			◆		
2	Downtown Park	Varies																											◆		
3	Multi-Use Fields	\$400,000 - \$500,000 each \$750,000 - \$1,000,000 (artificial turf)											◆																◆		
4	Lighting in Parks	\$5,000 - \$7,500 per pole pedestrian \$60,000 - \$80,000 per sports light	◆	◆	◆	◆	◆	◆	◆	◆	U	◆	◆	◆	◆	◆	◆	◆	◆	◆	◆	◆	◆	◆	◆	◆	◆	◆	◆	U	◆
5	Restroom / Concession	\$500,000 - \$600,000 range									U		◆	◆										◆					◆		
6	Outdoor Fitness	\$5,000 - \$7,500 each \$40,000 - \$50,000 range (multiple)	◆	◆		◆				◆		◆						◆	◆	◆	◆	◆	◆	◆			◆		◆		
7	Shade Structures	\$75,000 - \$150,000 range	◆	◆			◆	◆	◆	◆			◆		◆			◆	◆						◆	◆			◆		
8	Special Events	Varies											◆		◆									◆					◆		
9	Pavilions	\$300,000 - \$400,000 range	◆	U	◆		◆	◆	◆	◆		◆	◆	◆	◆	◆	◆	◆	◆	◆	◆	◆	◆	◆	◆	◆	◆	◆	◆	◆	
10	Wayfinding / Signage	\$800 - \$1,500 per sign	◆		◆	◆	◆	◆	◆	◆		◆	◆	◆	◆	◆	◆	◆	◆	◆	◆	◆	◆	◆	◆	◆	◆	◆	◆	◆	
11	Nature Preserve	Varies																											◆		
12	Practice Fields	\$250,000 range per field								◆															U	◆		◆			
13	Soccer Fields	\$400,000 - \$500,000 each \$750,000 - \$1,000,000 (artificial turf)									U																		◆		
Indoor																															
1	Expand Recreation Center	Varies													U																
2	Adult / Senior Center	Varies																											◆		

◆ - Recommended Location

U - Updates or Replacements

* = Refer to Pages 100 - 102

MODERATE PRIORITY ITEMS

		BUDGET RANGES	Hill Top	Horizon	Inspiration	Jim Ledbetter	John M. Whisenant	Johnson Bolin Property	Juanita Maxfield Aquatic Center	Mary Will Craig	McK. Soccer Complex at Craig Ranch	Murphy	North Park	Oak Hollow Golf Course	Old Settler's Park	Prestwyck	Recreation Center at Towne Lake	Robinson Ridge	Rowlett Creek	Senior Recreation Center	Serenity	Tom Allen, Jr.	Towne Lake	Valley Creek	W. B. Finney	Wattley	Winniford	Veterans Memorial Park	Future Parks / New Land	FUNDING SOURCES*	
Outdoor																															
14	Playgrounds	\$250,000 - \$500,000 range	U	U						◆	◆	◆	◆	◆				◆			◆		◆			◆					
15	Learning Stations	\$500 per sign	◆	◆		◆				◆									◆	◆	◆		◆				◆				
16	Dog Park	\$750,000 - \$1,250,000 range				◆																									
17	Public Art	Varies			◆	◆	◆			◆			◆	◆	◆	◆	◆		◆	◆	U	◆	◆		◆	◆	◆	◆	◆		
18	Fishing Piers	\$400,000 range									◆										◆										
19	Technology in Parks	Varies	◆	◆	◆	◆	◆	◆		◆	◆	◆	◆	◆	◆	◆	◆	◆	◆	◆	◆	◆	◆	◆	◆	◆	◆	◆	◆	◆	
20	Waterpark	Varies											◆																		
21	Softball Fields	\$750,000 - \$1,000,000 range								U			U										U								
22	Baseball Fields	\$750,000 - \$1,000,000 range											U																		
Indoor																															
3	Indoor Athletic Center	Varies																													
4	Nature & Event Center	Varies																													◆
5	New Recreation Center	Varies																													◆

◆ - Recommended Location

U - Updates or Replacements

* = Refer to Pages 100 - 102

HIGH PRIORITY ITEMS BY PARK

AH A. Hardy Eubanks, Jr.

Outdoor Fitness Stations

AR Al Ruschhaupt Soccer Complex

Trails, Lighting in Parks, Restroom/Concession, Shade Structures, Wayfinding/Signage, Upgraded Soccer Fields

AC Alex Clark Memorial Disc Golf

Upgraded Wayfinding/Signage, Shade Structures

AW Ash Woods

Lighting in Parks, Outdoor Fitness, Shade Structures, Pavilion, Wayfinding/Signage, Practice Fields

AV Aviator

Lighting in Parks, Outdoor Fitness, Shade Structures, Practice Fields

BW Bonnie Wenk

Trails, Lighting in Parks, Shade Structures, Special Events, Wayfinding/Signage

CC Carey Cox Memorial

Lighting in Parks, Outdoor Fitness, Shade Structures, Wayfinding/Signage, Practice Fields

CP Central Park

Downtown Park, Lighting in Parks, Special Events, Upgraded Pavilions, Wayfinding/Signage

CW Cottonwood *(2022 Renovation)*

CM Crape Myrtle World Collection

Lighting in Parks, Special Events, Upgraded Wayfinding/Signage

DL Day Labor Plaza

DP Dowell Property

Trails

DH Dwayne Howell Meditation Garden

Wayfinding/Signage

DCM Dr. Charles McKissick

Lighting in Parks, Outdoor Fitness, Shade Structures, Wayfinding/Signage

DGM Dr. Glenn Mitchell Memorial

Downtown Park, Lighting in Parks, Special Events, Wayfinding/Signage

DMH Dr. Mack Hill

Outdoor Fitness, Wayfinding/Signage

EA E. A. Randles

Lighting in Parks, Restroom/Concession, Outdoor Fitness, Shade Structures, Pavilions, Wayfinding/Signage

EW Erwin Park

Trails, Lighting in Parks, Restroom, Special Events, Pavilions, Wayfinding/Signage, Nature Preserve

EZ Ezra Lee (Tinker) Memorial

Lighting in Parks, Wayfinding/Signage

FC Falcon Creek

Trails, Lighting in Parks, Outdoor Fitness, Shade Structures, Wayfinding/Signage

FI Finch Park

Lighting in Parks, Outdoor Fitness, Special Events, Wayfinding/Signage

FZ Fitzhugh

Lighting in Parks, Wayfinding/Signage

GN Gabe Nesbitt Community Park

Expand Recreation Center, Trails, Multi-Use Fields, Lighting in Parks, Restroom/Concession, Outdoor Fitness, Shade Structures, Special Events, Pavilions, Wayfinding/Signage, Practice Fields

GW George Webb

Lighting in Parks

GB Gray Branch

Trails, Multi-Use Fields, Lighting in Parks, Restroom/Concession, Shade Structures, Pavilions, Wayfinding/Signage, Soccer Fields

HT Hill Top

Trails, Lighting in Parks, Outdoor Fitness, Shade Structures, Pavilions, Wayfinding/Signage

HZ Horizon

Trails, Lighting in Parks, Outdoor Fitness, Shade Structures, Upgraded Pavilions

IN Inspiration

Lighting in Parks, Pavilions, Wayfinding/Signage

JL	Jim Ledbetter Trails, Lighting in Parks, Outdoor Fitness, Wayfinding/Signage
JMW	John M. Whisenant Lighting in Parks, Shade Structures, Pavilion, Wayfinding/Signage
JB	Johnson Bolin Property Lighting in Parks, Shade Structures, Pavilions, Wayfinding/Signage
JM	Juanita Maxfield Aquatic Center Shade Structures, Pavilions, Wayfinding/Signage
MW	Mary Will Craig Trails, Lighting in Parks, Outdoor Fitness, Shade Structures, Pavilions, Practice Fields
MS	McKinney at Craig Ranch Trails, Upgrade Lighting in Parks, Upgrade Restroom/Concession, Wayfinding/Signage, Upgrade Soccer Fields
MU	Murphy Trails, Lighting in Parks, Outdoor Fitness, Pavilions
NP	North Park Trails, Multi-Use Fields, Lighting in Parks, Upgrade Restroom/Concession, Shade Structures, Special Events, Pavilions, Wayfinding/Signage
OH	Oak Hollow Golf Course Restroom / Concession, Wayfinding/Signage
OS	Old Settler's Park Expand Recreation Center, Trails, Lighting in Parks, Shade Structures, Pavilions, Wayfinding/Signage, Special Events
PW	Prestwyck Trails, Lighting in Parks, Outdoor Fitness, Shade Structures, Pavilions, Wayfinding/Signage
RC	Recreation Center at Towne Lake Lighting in Parks, Wayfinding/Signage
RR	Robinson Ridge Trails, Lighting in Parks, Outdoor Fitness, Shade Structures, Pavilions, Wayfinding/Signage
RW	Rowlett Creek Lighting in Parks, Outdoor Fitness, Shade Structures, Pavilions, Wayfinding/Signage

SR Senior Recreation Center

Upgraded Adult / Senior Center, Outdoor Fitness, Wayfinding/Signage

SE Serenity

Lighting in Parks, Outdoor Fitness, Pavilions, Wayfinding/Signage

TA Tom Allen, Jr.

Lighting in Parks, Outdoor Fitness, Wayfinding/Signage

TL Towne Lake

Trails, Lighting in Parks, Restroom/Concession, Outdoor Fitness, Special Events, Pavilions, Wayfinding/Signage

VC Valley Creek

Trails, Lighting in Parks, Pavilions, Wayfinding/Signage

WB W. B. Finney

Trails, Lighting in Parks, Shade Structures, Upgraded Pavilions, Wayfinding/Signage

WA Wattley

Trails, Lighting in Parks, Shade Structures, Pavilions, Wayfinding/Signage, Upgraded Practice Fields

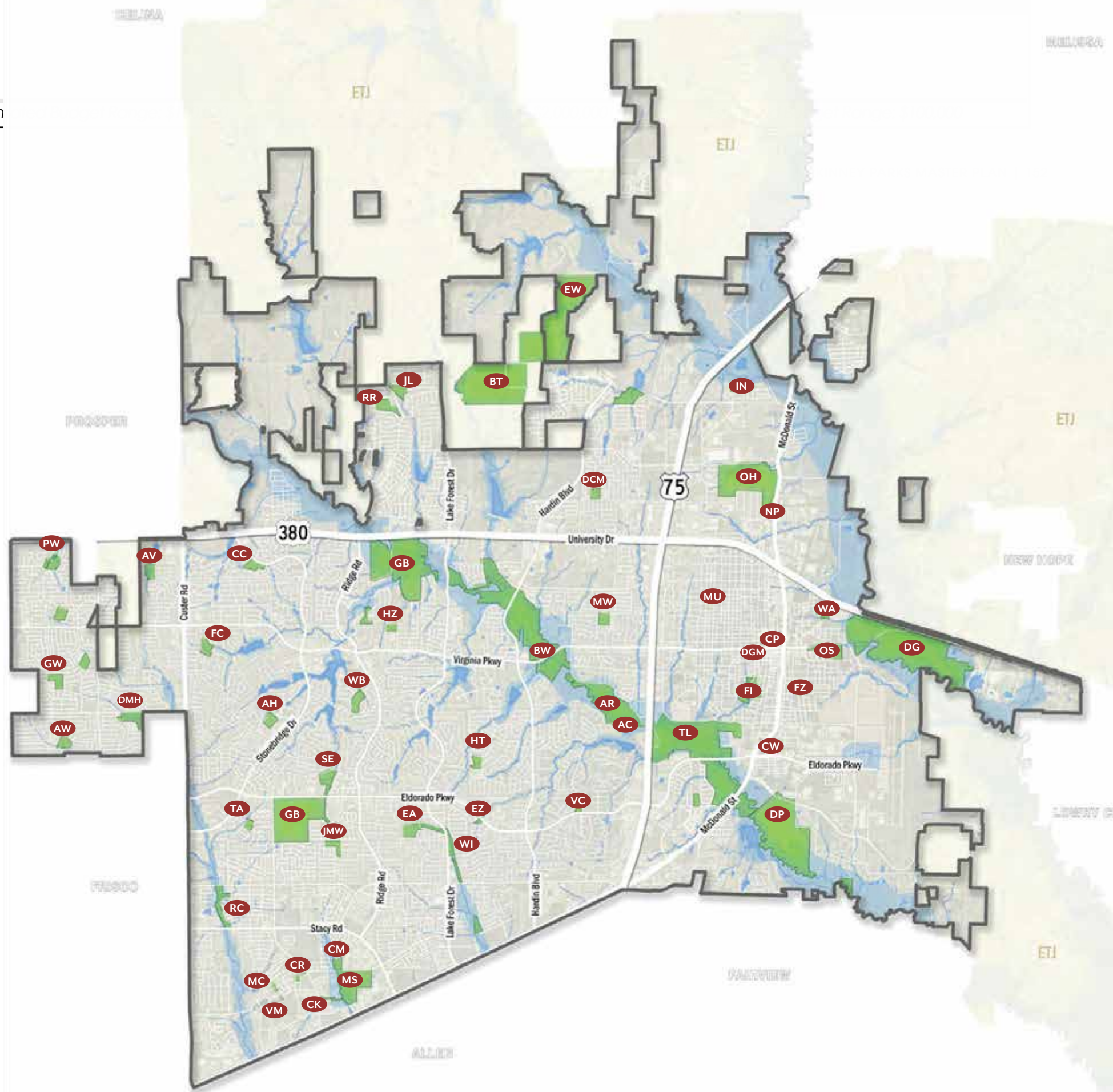
WI Winniford

Lighting in Parks, Outdoor Fitness, Pavilions, Wayfinding/Signage, Practice Fields

VM Veterans Memorial

Upgraded Lighting in Parks

Estin



HIGH PRIORITIES BY PARK

- | | |
|--|--|
| <ul style="list-style-type: none"> AH A. Hardy Eubanks, Jr.
<i>Outdoor Fitness</i> AR Al Ruschhaupt Soccer Complex
<i>Trails, Lighting in Parks, Restroom/Concession, Shade Structures, Wayfinding/Signage, Upgraded Soccer Fields</i> AC Alex Carr Memorial Disc Golf Course
<i>Wayfinding/Signage, Shade Structures</i> AW Ash Woods
<i>Lighting in Parks, Outdoor Fitness, Shade Structures, Pavilion, Wayfinding / Signage, Practice Fields</i> AV Aviator
<i>Lighting in Parks, Outdoor Fitness, Shade Structures, Practice Fields</i> BW Bonnie Wenk
<i>Trails, Lighting in Parks, Shade Structures, Special Events, Wayfinding / Signage</i> CC Carey Cox Memorial
<i>Lighting in Parks, Outdoor Fitness, Shade Structures, Wayfinding / Signage, Practice Fields</i> CP Central Park
<i>Downtown Park, Lighting in Parks, Special Events, Pavilions, Wayfinding / Signage</i> CW Cottonwood (2022 Renovation) CM Crape Myrtle World Collection
<i>Lighting in Parks, Special Events, Wayfinding / Signage</i> DL Day Labor Plaza DG Douglas Property
<i>Shade Structures, Pavilions, Wayfinding / Signage</i> DP Dowell Property
<i>Trails</i> DH Dwayne Howell Meditation Garden
<i>Wayfinding / Signage</i> DCM Dr. Charles McKissick
<i>Lighting in Parks, Outdoor Fitness, Shade Structures, Wayfinding / Signage</i> DGM Dr. Glenn Mitchell Memorial
<i>Downtown Park, Lighting in Parks, Special Events, Wayfinding / Signage</i> DMH Dr. Mack Hill
<i>Outdoor Fitness, Wayfinding / Signage</i> EA E. A. Randles
<i>Lighting in Parks, Restroom / Concession, Outdoor Fitness, Shade Structures, Pavilions, Wayfinding / Signage</i> EW Erwin Park
<i>Trails, Lighting in Parks, Restroom, Special Events, Pavilions, Wayfinding / Signage, Nature Preserve</i> EZ Ezra Lee (Tinker) Memorial
<i>Lighting in Parks, Wayfinding / Signage</i> FC Falcon Creek
<i>Trails, Lighting in Parks, Outdoor Fitness, Shade Structures, Wayfinding / Signage</i> FI Finch Park
<i>Lighting in Parks, Outdoor Fitness, Special Events, Wayfinding/Signage</i> FZ Fitzhugh
<i>Lighting in Parks, Wayfinding/Signage</i> GN Gabe Nesbitt Community Park
<i>Expand Recreation Center, Trails, Multi-Use Fields, Lighting in Parks, Restroom / Concession, Outdoor Fitness, Shade Structures, Special Events, Pavilions, Wayfinding / Signage, Practice Fields</i> GW George Webb
<i>Lighting in Parks</i> GB Gray Branch
<i>Trails, Shade Structures, Pavilions, Wayfinding / Signage</i> | <ul style="list-style-type: none"> HT Hill Top
<i>Trails, Lighting in Parks, Outdoor Fitness, Shade Structures, Pavilions, Wayfinding / Signage</i> HZ Horizon
<i>Trails, Lighting in Parks, Outdoor Fitness, Shade Structures, Pavilions</i> IN Inspiration
<i>Lighting in Parks, Pavilions, Wayfinding / Signage</i> JL Jim Ledbetter
<i>Trails, Lighting in Parks, Outdoor Fitness, Wayfinding / Signage</i> JMW John M. Whisenant
<i>Lighting in Parks, Shade Structures, Pavilion, Wayfinding / Signage</i> JM Juanita Maxfield Aquatic Center
<i>Shade Structures, Pavilions, Wayfinding / Signage</i> MW Mary Will Craig
<i>Trails, Lighting in Parks, Outdoor Fitness, Shade Structures, Pavilions, Practice Fields</i> MS McKinney Soccer Complex at Craig Ranch
<i>Trails, Lighting in Parks, Restroom / Concession, Wayfinding / Signage, Soccer Fields</i> MU Murphy
<i>Trails, Lighting in Parks, Outdoor Fitness, Pavilions</i> NP North Park
<i>Trails, Multi-Use Fields, Lighting in Parks, Restroom / Concession, Shade Structures, Special Events, Pavilions, Wayfinding / Signage</i> OH Oak Hollow Golf Course
<i>Restroom / Concession, Wayfinding / Signage</i> OS Old Settler's Park
<i>Trails, Lighting in Parks, Shade Structures, Special Events, Pavilions, Wayfinding / Signage</i> PW Prestwyck
<i>Trails, Lighting in Parks, Outdoor Fitness, Shade Structures, Pavilions, Wayfinding/Signage, Special Events</i> RC Recreation Center at Towne Lake
<i>Lighting in Parks, Wayfinding / Signage</i> RR Robinson Ridge
<i>Trails, Lighting in Parks, Outdoor Fitness, Shade Structures, Pavilions, Wayfinding/Signage</i> RW Rowlett Creek
<i>Lighting in Parks, Outdoor Fitness, Shade Structures, Pavilions, Wayfinding / Signage</i> SR Senior Recreation Center
<i>Adult / Senior Center, Outdoor Fitness, Wayfinding / Signage</i> SE Serenity
<i>Lighting in Parks, Outdoor Fitness, Pavilions, Wayfinding / Signage</i> TA Tom Allen, Jr.
<i>Lighting in Parks, Outdoor Fitness, Wayfinding / Signage</i> TL Towne Lake
<i>Trails, Lighting in Parks, Restroom / Concession, Outdoor Fitness, Special Events, Pavilions, Wayfinding / Signage, Nature Preserve</i> VC Valley Creek
<i>Trails, Lighting in Parks, Pavilions, Wayfinding / Signage</i> WB W. B. Finney
<i>Trails, Lighting in Parks, Shade Structures, Pavilions, Wayfinding / Signage</i> WA Wattley
<i>Trails, Lighting in Parks, Shade Structures, Pavilions, Wayfinding / Signage, Practice Fields</i> WI Winniford
<i>Shade Structures, Pavilions, Wayfinding / Signage</i> VM Veterans Memorial
<i>Upgraded Lighting in Parks</i> |
|--|--|



APPENDIX

THE FUTURE OF McKINNEY

GOALS & OBJECTIVES:

Direction for Strategic & Economic Growth

- Establish regional and infrastructure incentives to increase becoming growth
- Develop a retail development strategy for key areas of the community to further diversify revenue sources and expand entertainment, dining, and shopping options
- Provide a strong city economy by facilitation a balance between industrial, commercial, residential, and open space.

Operational Excellence

- Establish a timeline for a Municipal Facility/ Downtown Parking
- Implement, performance, management practices that include developing and training staff and Board and Commission members
- Balance available resources to accommodate the growth and maintenance needs of the city
- Identify opportunities for internal efficiencies through recurring analyses and continuous improvement

Maximize the Development Potential of the McKinney National Airport

- Implement initiatives and strategies to attract and expand corporate and commercial aviation
- Identify and implement land use regulations and policies which preserve and expand long-term operational success;
- Improve communication and marketing the value of the McKinney National Airport to the City and Region
- Continually maintain national recognition for excellence in Fixed Base Operations





Financially Sound Government

- Provide funding and organizational frameworks to ensure continual economic improvements
- Balance resources generated by property taxes, sales taxes, and fees
- Pursue and maintain an AAA Bond Rating with S&P and Moody's
- Create financial plans for future growth as well as future maintenance

Enhance the Quality of Life in McKinney

- Create affordable and accessible cultural arts activities and quality of life resources for all ages throughout the City
- Maximize public/private partnerships
- Develop Parks strategy to preserve green space for future park land
- Continue to market and highlight Downtown McKinney as a unique destination for residents and visitors alike


Safe & Secure Community

- Maintain performance measures that set McKinney apart from other cities
- Pursue and maintain the highest Insurance Service Office (ISO) fire protection classification
- Pursue and maintain low crime rates in comparison to other communities
- Continually increase operational efficiency in public safety departments

WORKING PARK MASTER PLAN PROJECTS

The following graphics represent parks master planning projects that will be used to develop and/or update parks in the McKinney system. Ongoing parks development projects can be found on the parks & recreation website.



AL RUSCHHAUPT PARK   **Kimley Horn** APRIL 2020

MASTER PLAN FALCON CREEK



- Legend:**
- ① Open Lawn
 - ② Pavilion
 - ③ Playground / Nature Play
 - ④ Splash Pad
 - ⑤ Seating Area
 - ⑥ Basketball Court
 - ⑦ Soccer Practice
 - ⑧ Parking
 - ⑨ Baseball Field
 - ⑩ Dog Park



Final Master Plan

- Key Features:**
- Expanded Playground w/ Security Lighting
 - Pavilion & Shaded Picnic Grove
 - Bench Swings
 - Basketball Court
 - Fitness Stations along Trail
 - Open Play
 - Park Edge Fencing
 - Accessible Parking
 - Trail w/ Bollard Lighting





MASTER PLAN W.B. FINNEY



GABE NESBITT PARK
UPDATED MASTER PLAN



MASTER PLAN KATHERINE B. WINNIFORD



- Legend:
- ① Bridge
 - ② Seating Area
 - ③ Parking
 - ④ Neighborhood Connection
 - ⑤ Gathering Space
 - ⑥ Expanded Playground
 - ⑦ Existing Playground
 - ⑧ Pavilion
 - ⑨ Basketball Court
 - ⑩ Boardwalk
 - ⑪ Pond



MCKINNEY PARKS
DISCOVERY SURVEY
APRIL 2022

KATHERINE B. WINNIFORD PARK

MASTER PLAN E.A. RANDES

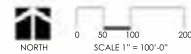


- Legend:
- ① Seating Area
 - ② Pavilion
 - ③ Baseball Field
 - ④ Basketball Court
 - ⑤ Pickleball Court
 - ⑥ Nature Trail
 - ⑦ Open Lawn / Soccer Practice
 - ⑧ Bridge
 - ⑨ Playground
 - ⑩ Splash Pad
 - ⑪ Restrooms
 - ⑫ Parking
 - ⑬ Pavilion & Restrooms



MCKINNEY PARKS
DISCOVERY SURVEY
APRIL 2022

E. A. RANDES PARK



DCBA | LANDSCAPE ARCHITECTURE
2100 East North Street | Suite 100
Plano, Texas 75074
Phone: 972.871.1584

Prepared for:
CITY OF MCKINNEY, TEXAS
3411 N. Stonemountain Lane
McKinney, Texas 75071
Phone: 972.547.1588

MASTER PLAN
MCKINNEY SOCCER COMPLEX
AT CRAIG RANCH
APRIL 2022

Final Master Plan

Key Features:

- New Playground w/ Rubberized Surfacing
- Running Track & Trail Loop
- Upgraded Basketball Court
- Skate Spot
- Picnic Grove
- Outdoor Classroom
- Upgraded Ballfields
- Upgraded Bleachers w/ Shade
- Open Sports Play



Enlargement



Final Master Plan

Key Features:

- Upgraded Ballfields
- Shaded Restroom & Concession w/ Picnic Seating
- Playground
- Skate Spot
- Reconfigured Parking
- Aquatic Center Drop Off
- Lighted Trail Loop
- Park Monument Signs



Enlargement



Final Master Plan

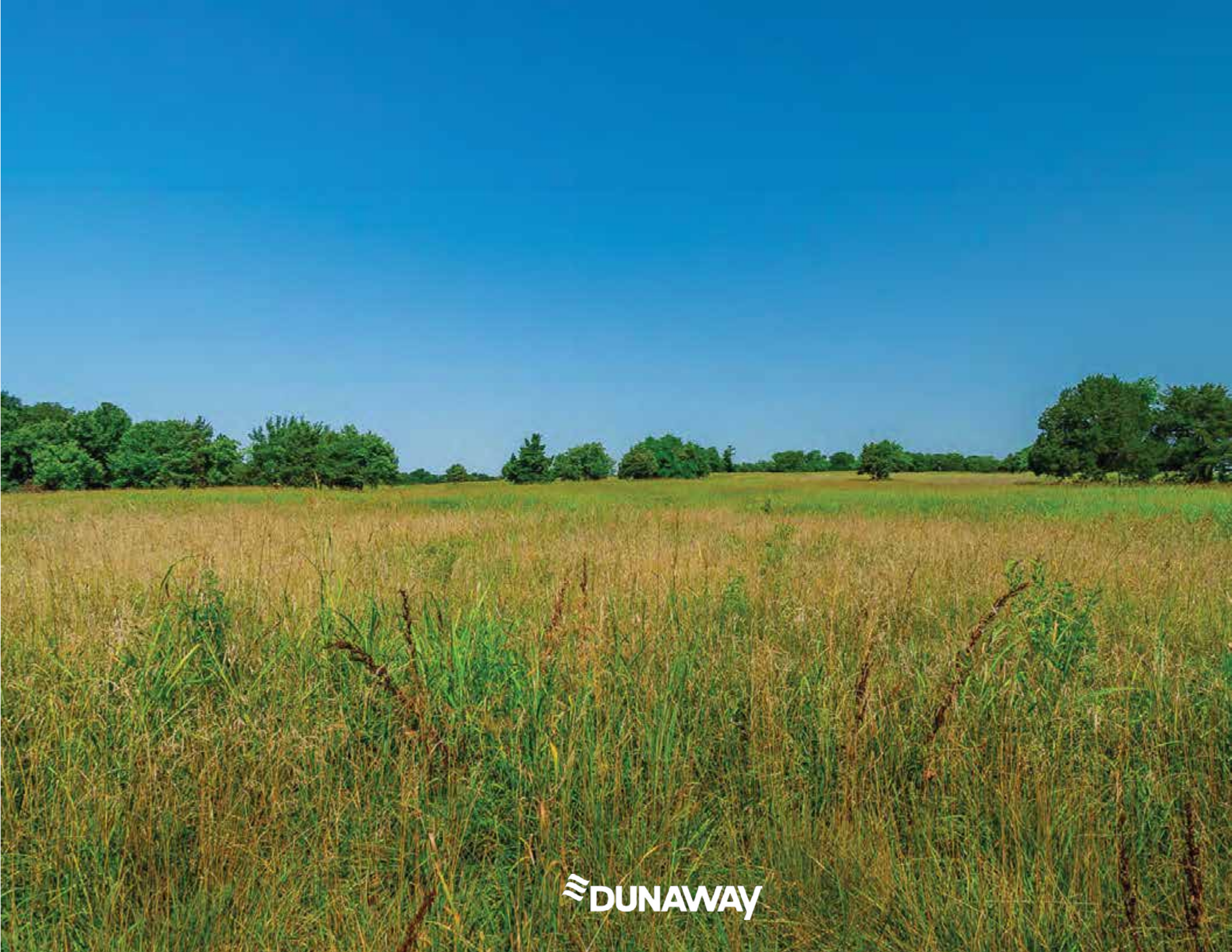
Key Features:

- Expanded Playground w/ Fibar Surfacing
- New Pavilion w/ Porch
- Upgraded Basketball Court
- Upgraded Pavilion w/ Shaded DG Picnicking Area
- Lighted Trail Loop
- Open Play
- Decorative Fence
- Reconfigured Parking



Enlargement





 **DUNAWAY**