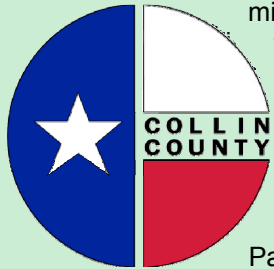


2007 Bond Program



Transportation, Facilities and Parks & Open Space projects make up the 2007 Collin County Bond Program. The Commissioners Court set the funding for the 2007 Transportation Bond at \$235.6 million, the Facilities Bond at \$76.3 million and the Parks & Open Space Bond at \$17 million. **The Court projects that passage of all propositions will not result in an increase in the overall property tax rate.**

The 2007 bond propositions were developed by citizen committees, which evaluated and determined viable projects for the program. Committee members were nominated by the Commissioners Court and include representatives from municipalities and unincorporated areas of the county. The committees were supported by engineers, architects, urban planners and other specialists. The mission of the citizen committees was to make recommendations that would enhance Collin County residents' quality of life, while taking into consideration the county's future growth.

After months of meetings, the committees made recommendations to the Commissioners Court on which projects would be considered as part of the 2007 Bond Program. Eligible voters will cast ballots on the three bond propositions during the November 6, 2007 election.



**November 6, 2007
Special Election
Early Voting
October 22-Nov 2**

Early Voting Locations

Collin County Elections Administration
County Courthouse— McDonald St. *
Allen Municipal Courts Facility
Anna City Hall Annex
Carpenter Park Recreation Center
Celina City Hall*
CCCCD – Preston Ridge Campus
CCCCD – Spring Creek Campus
Christ United Methodist Church— Plano
Farmersville City Hall*
Harrington Library
Murphy City Hall
PISD Administration Center
Parr Library
Renner Frankford Library
Wylie Municipal Building

*Temporary branch locations

2007 Collin County Bond Program

Three Components: Facilities, Parks & Open Space and Transportation

Facilities \$76.3 million

Parks & Open Space \$17 million

Transportation \$235.6 million

2007 Collin County Bond Program

Transportation

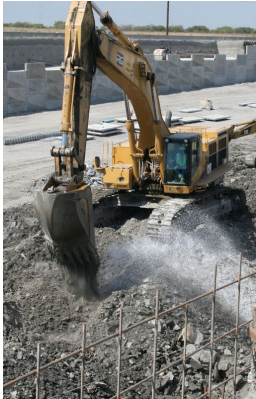


Prepared by the
Collin County Office of Public Information

210 S. McDonald Street Suite 636
McKinney, TX 75069

The cost will be \$235.6 million for 113 projects that represent transportation needs in Collin County, including roads within both city limits and in unincorporated areas. An additional 66 projects have been identified and may be funded under this bond program if additional monies are secured or made available from the "most critical" project list.

For transportation improvements within any city's jurisdiction, the county's participation is a fixed amount, so cost overruns will not result in an increase in the county's share of the cost. In order to encourage local participation, county funding will not exceed 50% of a project's total cost. Should a city be unable to provide matching funds to pay for a project within its jurisdiction, the county's contribution from this bond program will be diverted to another approved project.



The transportation bond committee relied heavily on the cities' recommendations in developing the list of road projects to fund. In addition, extensive traffic, population and commerce projections were collected from the North Central Texas Council of Governments in order to develop future county mobility needs. Collin County is one of the fastest growing areas in Texas in terms of population and business, now and in the foreseeable future, and our transportation needs reflect this increasing pressure on our infrastructure.

| | | |
|-----------------------------|---|--|
| City of Allen | Chaparral New Arterial Ridgeview New Arterial Exchange Engineering Bethany Widening Watters Widening Stacy Rd Engineering US 75 Engineering Ridgeview Engineering | PrestonRd/SH 190 Intersection Improvements 14th St Reconstruction Communications Pkwy Widening/New Arterial 15th St Reconstruction Chaparral Bridge Reconstruction Spring Creek Pkwy Widening Shiloh Rd Reconstruction |
| City of Anna | Mantua Rd/CR 371 Reconstruction Rosamond Pkwy Engineering/ROW FM 455 (W. White St) Engineering/ROW Ferguson Pkwy Engineering/ROW | Los Rios Widening Park Blvd Widening Mapleshade New Arterial Los Rios Widening Ridgeview Dr Widening International Pkwy Widening Brand Rd Widening McDermott Rd Widening Parker Interchange Intersection Improvements Ridgeview Dr Widening |
| City of Carrollton | Midway Rd Widening | City of Princeton |
| City of Celina | CR 5 Reconstruction | City of Prosper |
| City of Dallas | Preston Rd Widening | CR 407 (Monte Carlo) Reconstruction Prosper Trail Widening/Reconstruction |
| Town of Fairview | Stacy Rd Widening FM1378 Engineering/ROW Frisco Rd Engineering/ROW Fairview Pkwy New Arterial | First St Reconstruction Coit Rd Reconstruction Alma Rd Intersection Improvements Jupiter Rd Intersection Improvements (2 projects) SH 190 Intersection Improvements Performance Dr Engineering Renner Rd Engineering Ranch Rd Widening DeWitt St Widening |
| City of Farmersville | Extension of Farmersville Pkwy (CR 611) Reconstruction Extension of Floyd St Engineering/ROW | City of Richardson |
| City of Frisco | Rolater Rd Widening Coit Rd Widening/New Arterial El Dorado Pkwy Widening Independence Pkwy Widening Coit Rd New Arterial Virginia Pkwy New Arterial (2 projects) El Dorado Pkwy Widening (2 projects) Virginia Pkwy New Arterial Lebanon Rd Widening North Dallas Pkwy Widening | City of Sachse |
| City of Lucas | Country Club Rd Intersection Improvements | Maxwell Creek Rd Reconstruction Brown St Reconstruction McMillan Rd (Park Blvd) Reconstruction Stone Rd Reconstruction |
| City of McKinney | Custer Road Widening FM 543/1461 Connector New Arterial FM 546 Connector Engineering/ROW Custer Rd Engineering/ROW FM 1461 Engineering/ROW Airport Dr Reconstruction SH 5/McDonald Engineering/ROW Virginia Pkwy Widening Custer Rd Widening Bloomdale Rd New Arterial Lake Forest Dr Widening Lake Forest Dr Reconstruction (3 projects) | City of Wylie |
| City of Melissa | Melissa Road Reconstruction/Widening Throckmorton Rd New Arterial Davis Rd Reconstruction Fannin Rd Reconstruction | County Road Projects |
| City of Murphy | Betsy Ln Reconstruction McCreary Rd Reconstruction | Lake Lavon Bridge Crossing Engineering Outer Loop New Arterial (2 projects) CR 408 ROW CR 618 ROW CR 819 (Ballard St) Reconstruction Park Blvd ROW CR 170 ROW CR 424 Reconstruction |
| City of Parker | McCreary Road (CR 245) Reconstruction Chaparral Dr Widening | County Drainage Projects |
| City of Plano | Major Thoroughfare Rehabilitation Reconstruction Intersection Improvements Toll Rd/Chapel Hill Ramp Improvements | CR 408 @ Bomars Ranch CR 618 @ Cedar Creek CR 638 @ Sabine Creek CR 463 @ Branch of Sister Grove Creek CR 127 @ How Branch CR 617 @ Branch of Hickory Creek CR 408 @ Tickey Creek CR 655 @ Branch of Brushy Creek CR 593 @ Price Creek CR 58 @ Clarks Branch CR 134 @ Honey Creek CR 580 @ Indian Creek |