

**FY2010 Adopted Budget**

	FY 2007 ACTUALS	FY 2008 ACTUALS	FY 2009 Adopted Budget	FY 2009 Adjusted Budget	Total YTD Expensed & Encumbered	Budget Unspent & Unencumber	FY 2010 ADOPTED BUDGET
001-2410-444-40-10REGULAR FULL TIME	311,889	307,932	322,510	322,510	303,987	18,523	307,710
001-2410-444-40-12TEMPORARY FULL TIME	360						
001-2410-444-41-01LONGEVITY	5,500	7,308	8,575	8,575		8,575	9,779
001-2410-444-41-07COMP TIME BUYOUT		176					
001-2410-444-41-09PTO BUYOUT		3,201					
001-2410-444-42-20HCA/MEDICARE	22,773	23,031	25,328	25,328	21,866	3,462	24,288
001-2410-444-42-30EMPLOYEE HEALTH INSURANCE	91,525	73,276	67,800	67,800	67,800		65,681
001-2410-444-42-35LONG-TERM DISABILITY	1,109	1,122	1,216	1,216	820	396	770
001-2410-444-42-36SHORT-TERM DISABILITY	167	210	216	216	175	41	167
001-2410-444-42-37LONG-TERM CARE	280	456	1,440	1,440	436	1,004	1,305
001-2410-444-42-40RETIREMENT	40,393	39,814	43,041	43,041	39,191	3,850	42,681
001-2410-444-42-45SUPPLEMENTAL DEATH BENEFIT	832	839	928	928	861	67	924
001-2410-444-42-60UNEMPLOYMENT INSURANCE		1,621	1,656	1,656		1,656	1,539
<b>TOTAL SALARIES &amp; BENEFITS</b>	<b>474,108</b>	<b>458,986</b>	<b>472,710</b>	<b>472,710</b>	<b>435,136</b>	<b>37,574</b>	<b>454,844</b>
001-2410-444-49-01TRAVEL REIMBURSEMENT	547	198	798	798	34	764	300
001-2410-444-49-10EDUCATION & CONFERENCE	6,094	3,486	9,000	9,000	2,469	6,531	8,500
<b>TOTAL TRAINING &amp; TRAVEL</b>	<b>7,241</b>	<b>3,684</b>	<b>9,798</b>	<b>9,798</b>	<b>2,503</b>	<b>7,295</b>	<b>8,800</b>
001-2410-444-51-01OFFICE SUPPLIES	3,047	1,099	3,830	3,889	3,080	809	3,000
001-2410-444-51-02COMPUTER SUPPLIES		102					200
001-2410-444-52-01EXTRAORD OFFICE SUPPLIES		44					
001-2410-444-52-05EXTRAORD PHONE SUPPLIES					405	405	
001-2410-444-55-10DUES & SUBSCRIPTIONS	631	600	655	655	213	442	600
001-2410-444-64-42CREDIT CARD SERVICE FEES	21						
001-2410-444-65-62PRINTED MATERIALS		730	300	300	310	10-	500
001-2410-444-65-64BUSINESS MEALS	24	117	250	250		250	200
<b>TOTAL MAINTENANCE &amp; OPERATIONS</b>	<b>3,723</b>	<b>2,692</b>	<b>5,035</b>	<b>5,094</b>	<b>4,008</b>	<b>1,086</b>	<b>4,500</b>
<b>TOTAL JPI-ADMIN</b>	<b>485,072</b>	<b>465,362</b>	<b>487,543</b>	<b>487,602</b>	<b>441,647</b>	<b>45,955</b>	<b>468,144</b>



**FY2010 Adopted Budget**

9/29/09 13:52:07 PAGE 186  
**JP-SHARED**  
**015-2401-444**

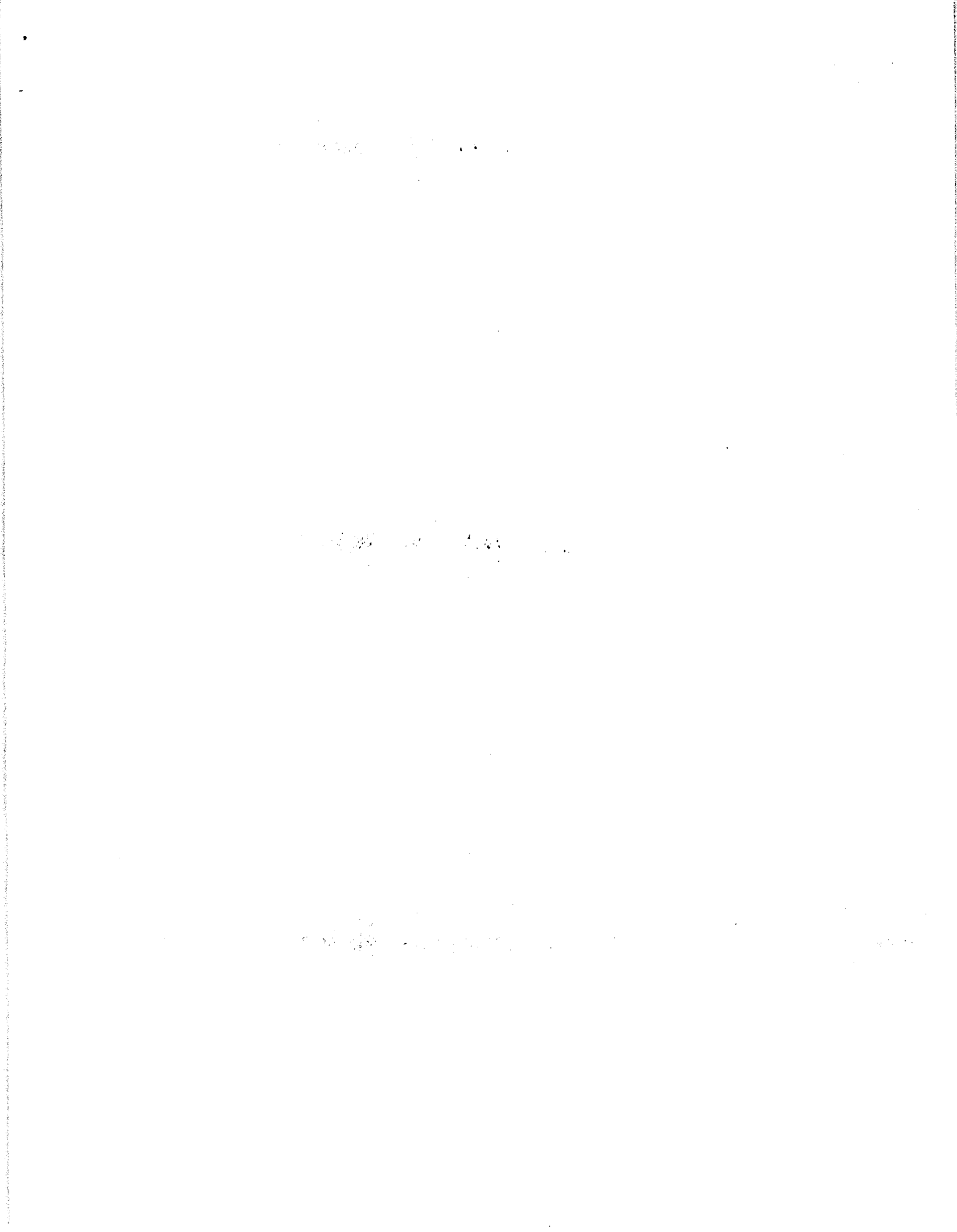
015-2401-444,64-15SUBSTITUTE COURT REPORTER

	FY 2007 ACTUALS	FY 2008 ACTUALS	FY 2009 Adopted Budget	FY 2009 Adjusted Budget	Total YTD Expensed & Encumbered	Budget Unspent & Unencumbered	FY 2010 ADOPTED BUDGET
<b>TOTAL MAINTENANCE &amp; OPERATIONS</b>	795	7,269	8,500	8,500	5,885	2,615	8,500
<b>TOTAL JP-SHARED</b>	795	7,269	8,500	8,500	5,885	2,615	8,500
<b>TOTAL JUSTICES OF THE PEACE</b>	795	7,269	8,500	8,500	5,885	2,615	8,500



### Monthly Expenditure Report

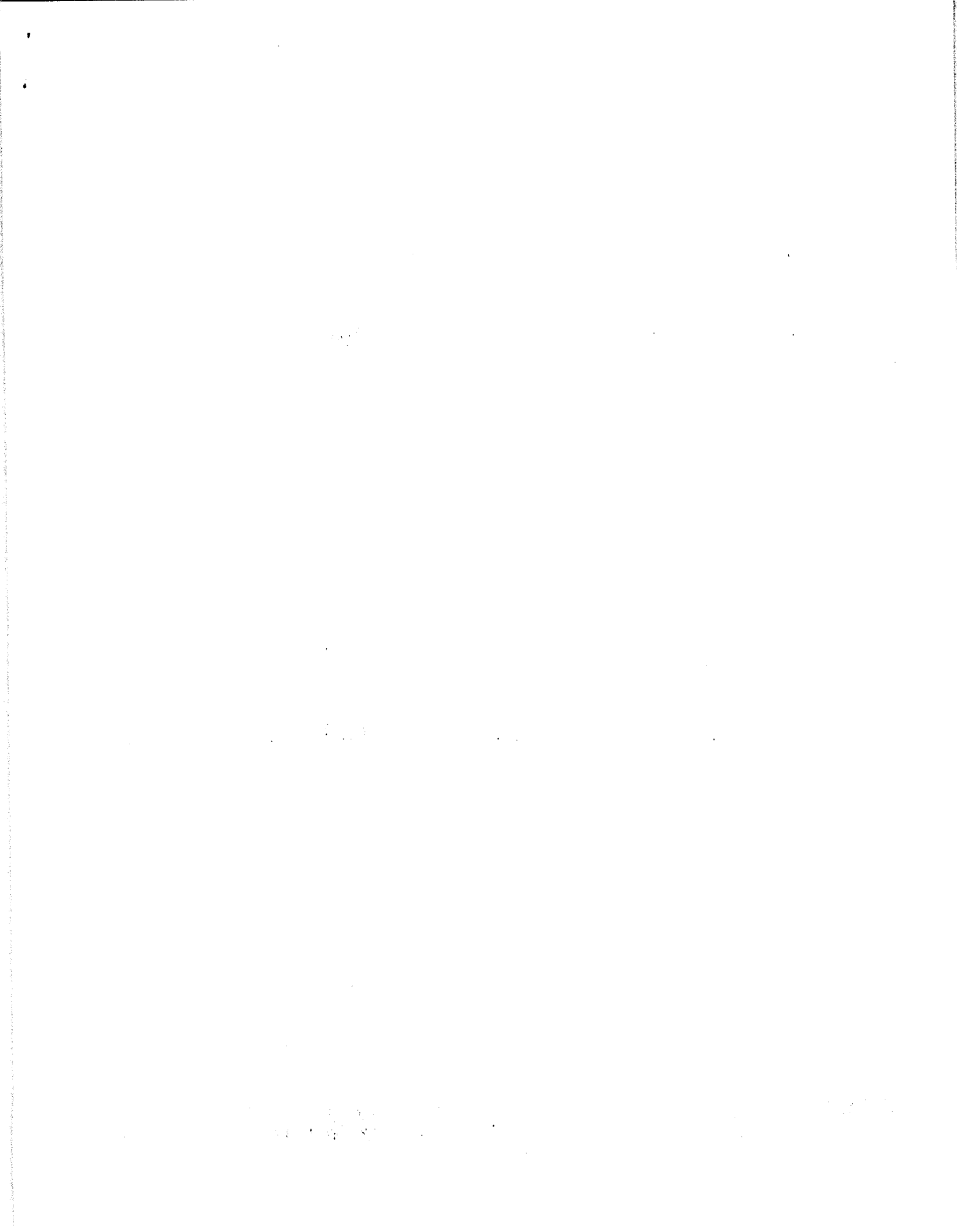
FY	Account Number	Object	Original Budget	Adjusted Budget	FY Actual	Balance	% Spent	Category
<b>2410 JP1-ADMIN</b>								
2010	001-2410-444.40-10	REGULAR FULL TIME	\$307,710.00	\$307,710.00	\$0.00	\$307,710.00		1 Salary & Benefits
2010	001-2410-444.41-01	LONGEVITY	\$9,779.00	\$9,779.00	\$0.00	\$9,779.00		
2010	001-2410-444.42-20	FICAMEDICARE	\$24,288.00	\$24,288.00	\$0.00	\$24,288.00		
2010	001-2410-444.42-30	EMPLOYEE HEALTH INSURANCE	\$65,681.00	\$65,681.00	\$0.00	\$65,681.00		
2010	001-2410-444.42-35	LONG-TERM DISABILITY	\$770.00	\$770.00	\$0.00	\$770.00		
2010	001-2410-444.42-36	SHORT-TERM DISABILITY	\$167.00	\$167.00	\$0.00	\$167.00		
2010	001-2410-444.42-37	LONG-TERM CARE	\$1,305.00	\$1,305.00	\$0.00	\$1,305.00		
2010	001-2410-444.42-40	RETIREMENT	\$42,681.00	\$42,681.00	\$0.00	\$42,681.00		
2010	001-2410-444.42-45	SUPPLEMENTAL DEATH BENEFIT	\$924.00	\$924.00	\$0.00	\$924.00		
2010	001-2410-444.42-60	UNEMPLOYMENT INSURANCE	\$1,539.00	\$1,539.00	\$0.00	\$1,539.00		
		1 Salary & Benefits	\$454,844.00	\$454,844.00	\$0.00	\$454,844.00		
2010	001-2410-444.49-01	TRAVEL REIMBURSEMENT	\$300.00	\$300.00	\$0.00	\$300.00		3 Training & Travel
2010	001-2410-444.49-10	EDUCATION & CONFERENCE	\$8,500.00	\$8,500.00	\$0.00	\$8,500.00		
		3 Training & Travel	\$8,800.00	\$8,800.00	\$0.00	\$8,800.00		
2010	001-2410-444.51-01	OFFICE SUPPLIES	\$3,000.00	\$3,000.00	\$1,000.00	\$2,000.00	33.33%	4 Administrative
2010	001-2410-444.51-02	COMPUTER SUPPLIES	\$200.00	\$200.00	\$0.00	\$200.00		
2010	001-2410-444.55-10	DUES & SUBSCRIPTIONS	\$600.00	\$600.00	\$42.50	\$557.50	7.08%	
		4 Administrative	\$3,800.00	\$3,800.00	\$1,042.50	\$2,757.50		
2010	001-2410-444.65-62	PRINTED MATERIALS	\$500.00	\$500.00	\$0.00	\$500.00		5 Operating
2010	001-2410-444.65-64	BUSINESS MEALS	\$200.00	\$200.00	\$0.00	\$200.00		
		5 Operating	\$700.00	\$700.00	\$0.00	\$700.00		
			\$468,144.00	\$468,144.00	\$1,042.50	\$467,101.50		



## Monthly Expenditure Report

Date: 10/12/2009

FY	Account Number	Object	Original Budget	Adjusted Budget	FY Actual	Balance	% Spent	Category
2401	JP-SHARED							
2010	015-2401-444.64-15	SUBSTITUTE COURT REPORTER	\$8,500.00	\$8,500.00	\$0.00	\$8,500.00		5 Operating
		5 Operating	\$8,500.00	\$8,500.00	\$0.00	\$8,500.00		
			\$8,500.00	\$8,500.00	\$0.00	\$8,500.00		





## Monthly Expenditure Report

FY	Account Number	Object	Original Budget	Adjusted Budget	FY Actual	Balance	% Spent	Category
2410	JP1-ADMIN							
2010	001-2410-444.40-10	REGULAR FULL TIME	\$307,710.00	\$307,710.00	\$73,799.28	\$233,910.72	23.98%	1 Salary & Benefits
2010	001-2410-444.41-01	LONGEVITY	\$9,779.00	\$9,779.00	\$0.00	\$9,779.00		
2010	001-2410-444.42-20	FICAMEDICARE	\$24,288.00	\$24,288.00	\$5,366.64	\$18,921.36	22.10%	
2010	001-2410-444.42-30	EMPLOYEE HEALTH INSURANCE	\$65,681.00	\$65,681.00	\$0.00	\$65,681.00		
2010	001-2410-444.42-35	LONG-TERM DISABILITY	\$770.00	\$770.00	\$168.72	\$601.28	21.91%	
2010	001-2410-444.42-36	SHORT-TERM DISABILITY	\$167.00	\$167.00	\$37.07	\$129.93	22.20%	
2010	001-2410-444.42-37	LONG-TERM CARE	\$1,305.00	\$1,305.00	\$101.45	\$1,203.55	7.77%	
2010	001-2410-444.42-40	RETIREMENT	\$42,681.00	\$42,681.00	\$9,593.94	\$33,087.06	22.48%	
2010	001-2410-444.42-45	SUPPLEMENTAL DEATH BENEFIT	\$924.00	\$924.00	\$195.75	\$728.25	21.19%	
2010	001-2410-444.42-60	UNEMPLOYMENT INSURANCE	\$1,539.00	\$1,539.00	\$0.00	\$1,539.00		
		1 Salary & Benefits	\$454,844.00	\$454,844.00	\$89,262.85	\$365,581.15		
2010	001-2410-444.49-01	TRAVEL REIMBURSEMENT	\$300.00	\$300.00	\$0.00	\$300.00		3 Training & Travel
2010	001-2410-444.49-10	EDUCATION & CONFERENCE	\$8,500.00	\$8,500.00	\$1,018.12	\$7,481.88	11.98%	
		3 Training & Travel	\$8,800.00	\$8,800.00	\$1,018.12	\$7,781.88		
2010	001-2410-444.51-01	OFFICE SUPPLIES	\$3,000.00	\$3,000.00	\$1,356.04	\$1,643.96	45.20%	4 Administrative
2010	001-2410-444.51-02	COMPUTER SUPPLIES	\$200.00	\$200.00	\$0.00	\$200.00		
2010	001-2410-444.55-10	DUES & SUBSCRIPTIONS	\$600.00	\$600.00	\$85.00	\$515.00	14.17%	
		4 Administrative	\$3,800.00	\$3,800.00	\$1,441.04	\$2,358.96		
2010	001-2410-444.65-62	PRINTED MATERIALS	\$500.00	\$500.00	\$676.35	(\$176.35)	135.27%	5 Operating
2010	001-2410-444.65-64	BUSINESS MEALS	\$200.00	\$200.00	\$0.00	\$200.00		
		5 Operating	\$700.00	\$700.00	\$676.35	\$23.65		
			\$468,144.00	\$468,144.00	\$92,398.36	\$375,745.64		

